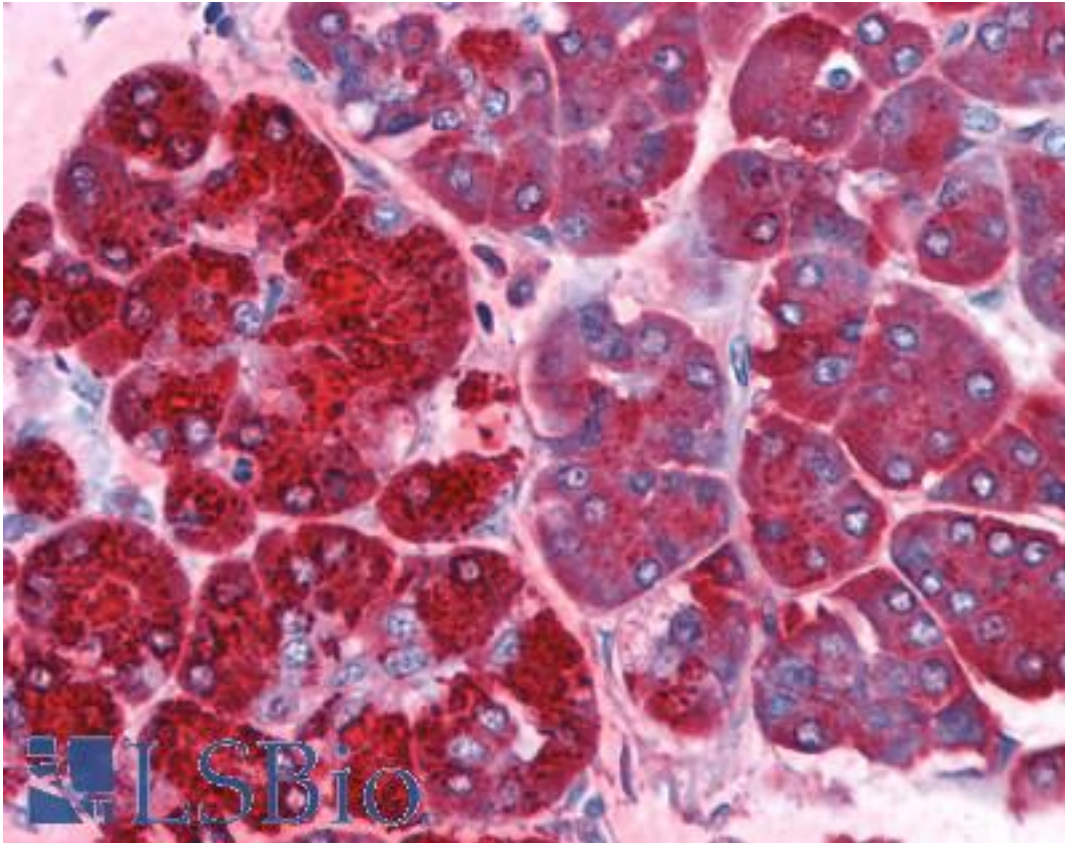


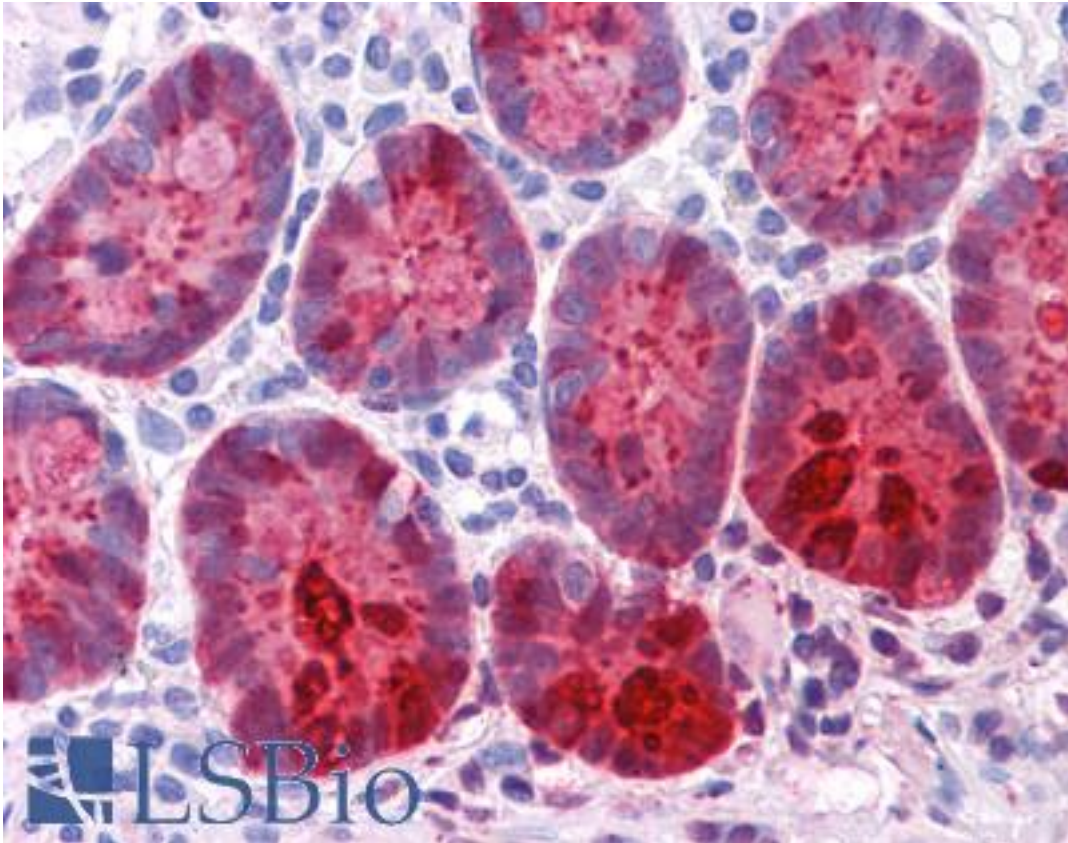
REG1A / REG Mouse anti-Human Monoclonal (1A4) Antibody - LS-B4115 - LSBio	
CatalogID:	LS-B4115
Validation:	This antibody replaces catalog number LS-C108725. It has been validated for use in the following assays: IHC-P.
Target:	regenerating islet-derived 1 alpha (REG1A)
Synonyms:	REG1A Antibody, ICRF Antibody, Lithostathine 1 alpha Antibody, p19 Antibody, Pancreatic stone protein Antibody, Pancreatic thread protein Antibody, Protein-X Antibody, PSPS Antibody, REG-1-alpha Antibody, Regenerating protein I alpha Antibody, PSP Antibody, PTP Antibody, REG Antibody, Lithostathine-1-alpha Antibody, PSPS1 Antibody
Host	REG1A antibody was produced in Mouse
Clonality:	Monoclonal
Isotype:	IgG1
Clone Name:	1A4
Immunogen Species:	REG1A / REG antibody was raised against Human
Immunogen:	REG1A / REG antibody was raised against purified recombinant fragment of human REG1A fused with hIgGFc tag expressed in HEK293 cell line.
Specificity:	Human REG1A
Reactivity:	Human
Purification:	Ascites
Presentation:	Ascites fluid, 0.03% sodium azide
Recommended Storage:	Long term: -20°C; Short term: +4°C. Avoid repeat freeze-thaw cycles.
Uses:	IHC - Paraffin (1:200), Immunofluorescence (1:200 - 1:1000), ELISA (1:10000) (Optimal dilution to be determined by the researcher)
Size:	50 µl

Immunohistochemistry Image:



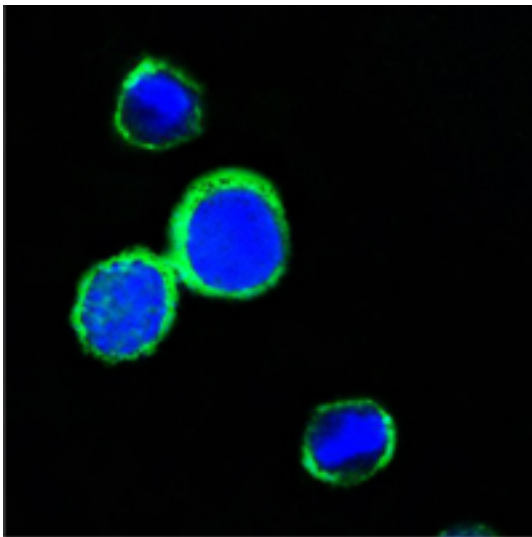
Anti-REG1A antibody IHC of human pancreas. Immunohistochemistry of formalin-fixed, paraffin-embedded tissue after heat-induced antigen retrieval. Antibody LS-B4115 dilution 1:200.

Immunohistochemistry Image:



Anti-REG1A antibody IHC of human small intestine. Immunohistochemistry of formalin-fixed, paraffin-embedded tissue after heat-induced antigen retrieval. Antibody LS-B4115 dilution 1:200.

Immunocytochemistry Image:



Confocal immunofluorescence of PC12 cells using anti-REG1A monoclonal antibody (green). Blue: DRAQ5 fluorescent DNA dye.

Requested From:

Japan

Laboratory Reagent For In Vitro Research Use Only

Not for resale without prior written consent from LifeSpan BioSciences, Inc.

Created on 9/23/2014

© 2014 LifeSpan BioSciences