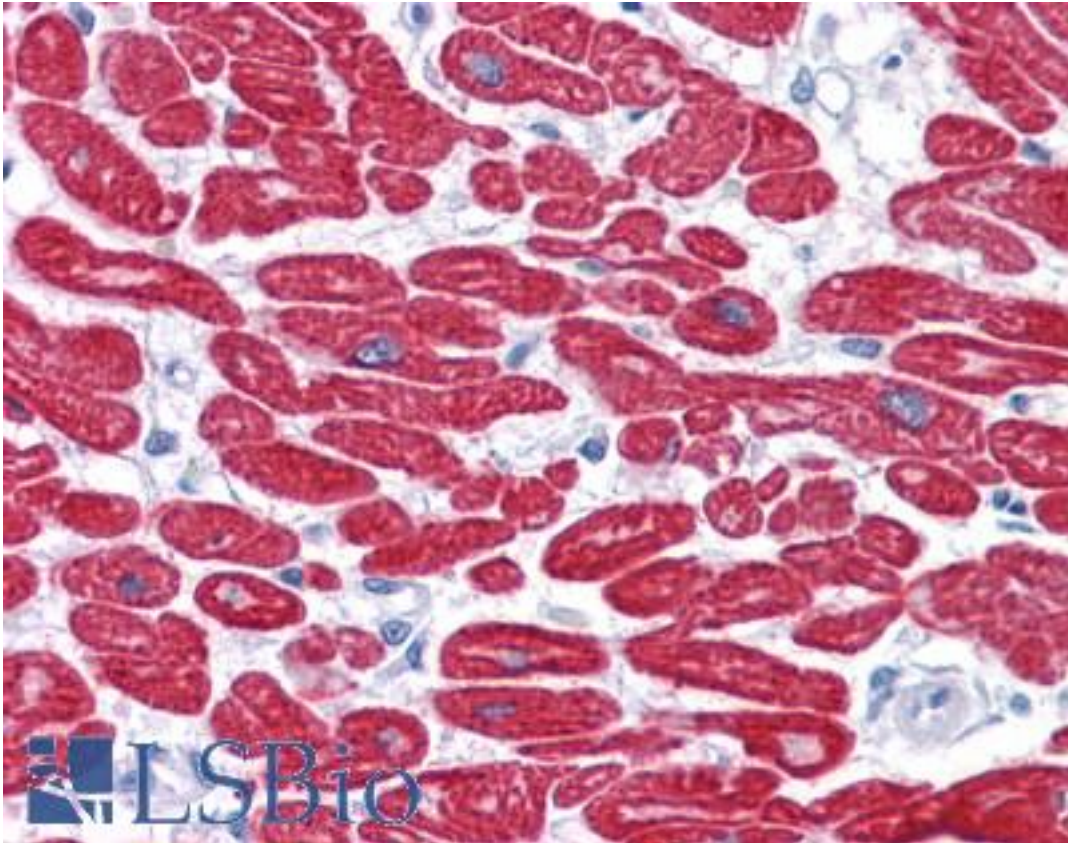


**MYL3 Mouse anti-Human Monoclonal (7C1) Antibody - LS-B4114 - LSBio**

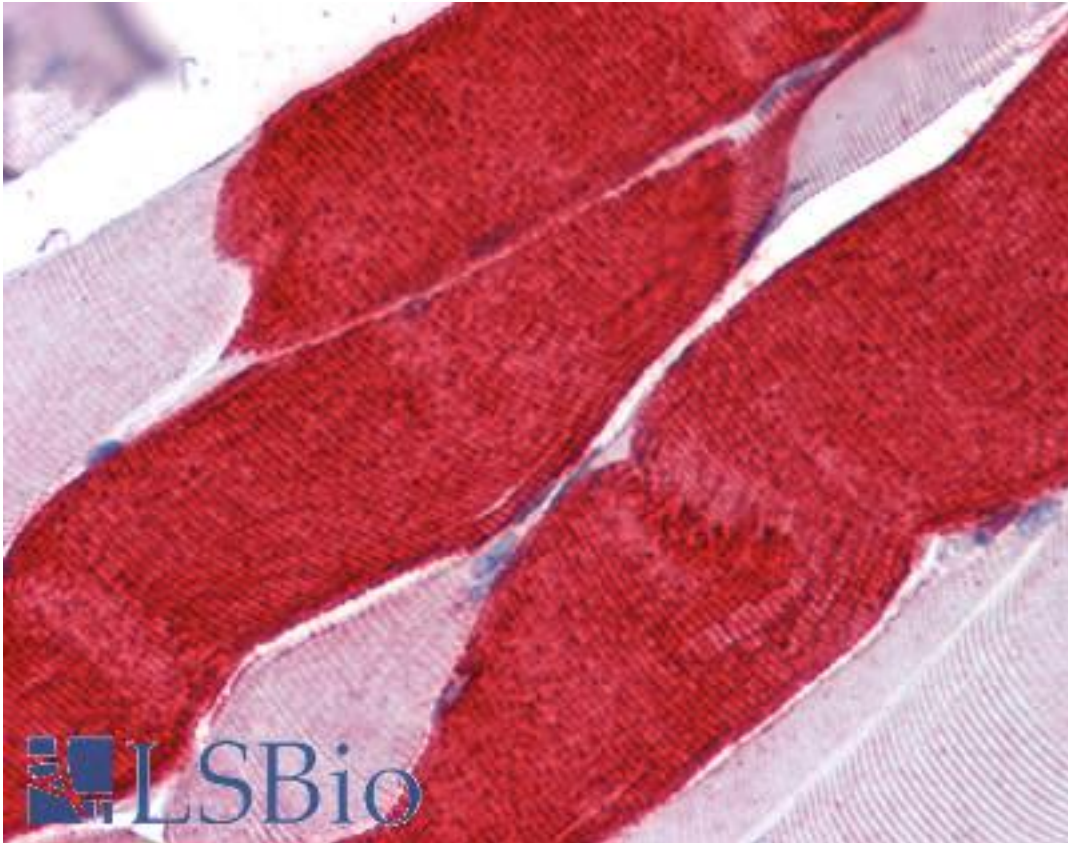
<b>CatalogID:</b>	LS-B4114
<b>Validation:</b>	This antibody replaces catalog number LS-C108843. It has been validated for use in the following assays: IHC-P.
<b>Target:</b>	myosin, light chain 3, alkali; ventricular, skeletal, slow (MYL3)
<b>Synonyms:</b>	MYL3 Antibody, CMH8 Antibody, Cardiac myosin light chain 1 Antibody, CMLC1 Antibody, Myosin, light chain 3, alkali Antibody, Myosin light chain 3 Antibody, Ventricular, skeletal, slow Antibody, VLC1 Antibody, MLC1SB Antibody, MLC1V Antibody
<b>Host</b>	MYL3 antibody was produced in Mouse
<b>Clonality:</b>	Monoclonal
<b>Isotype:</b>	IgG1
<b>Clone Name:</b>	7C1
<b>Immunogen Species:</b>	MYL3 antibody was raised against Human
<b>Immunogen:</b>	MYL3 antibody was raised against purified recombinant fragment of MYL3 expressed in <i>E. coli</i> .
<b>Specificity:</b>	Human MYL3
<b>Reactivity:</b>	Human
<b>Purification:</b>	Ascites
<b>Presentation:</b>	Ascites fluid, 0.03% sodium azide
<b>Recommended Storage:</b>	Long term: -20°C; Short term: +4°C. Avoid repeat freeze-thaw cycles.
<b>Uses:</b>	IHC - Paraffin (1:200), Western blot (1:500 - 1:2000), ELISA (1:10000) (Optimal dilution to be determined by the researcher)
<b>Size:</b>	50 µl

**Immunohistochemistry Image:**



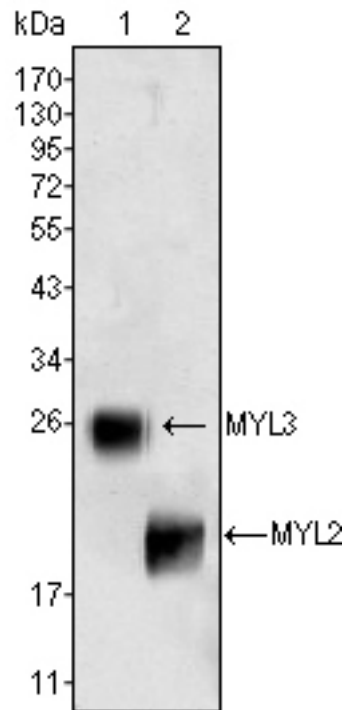
Anti-MYL3 antibody IHC of human heart. Immunohistochemistry of formalin-fixed, paraffin-embedded tissue after heat-induced antigen retrieval. Antibody LS-B4114 dilution 1:200.

**Immunohistochemistry Image:**



Anti-MYL3 antibody IHC of human skeletal muscle. Immunohistochemistry of formalin-fixed, paraffin-embedded tissue after heat-induced antigen retrieval. Antibody LS-B4114 dilution 1:200.

**Western Blot Image:**



Western blot of anti-MYL3 (1) and anti-MYL2 (2) monoclonal antibody against rat fetal heart tissues lysate.

**Requested From:**

Japan

Laboratory Reagent For In Vitro Research Use Only

Not for resale without prior written consent from LifeSpan BioSciences, Inc.

Created on 9/23/2014

© 2014 LifeSpan BioSciences