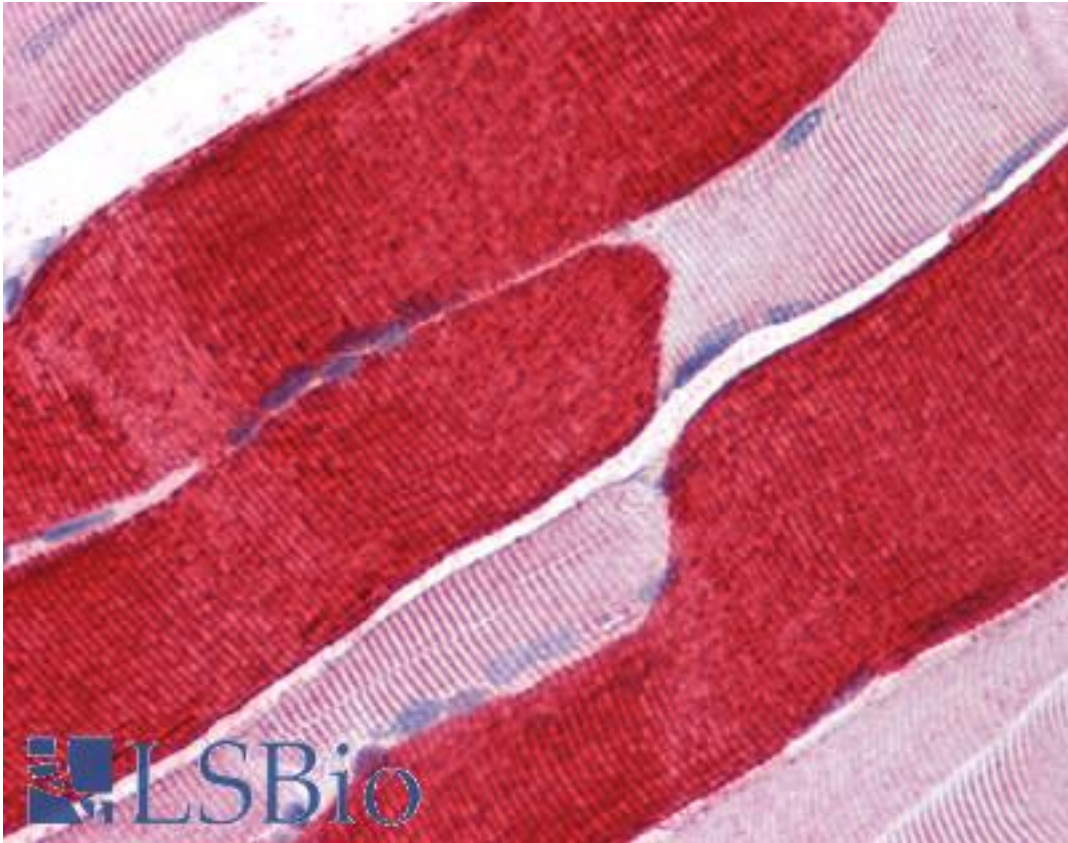


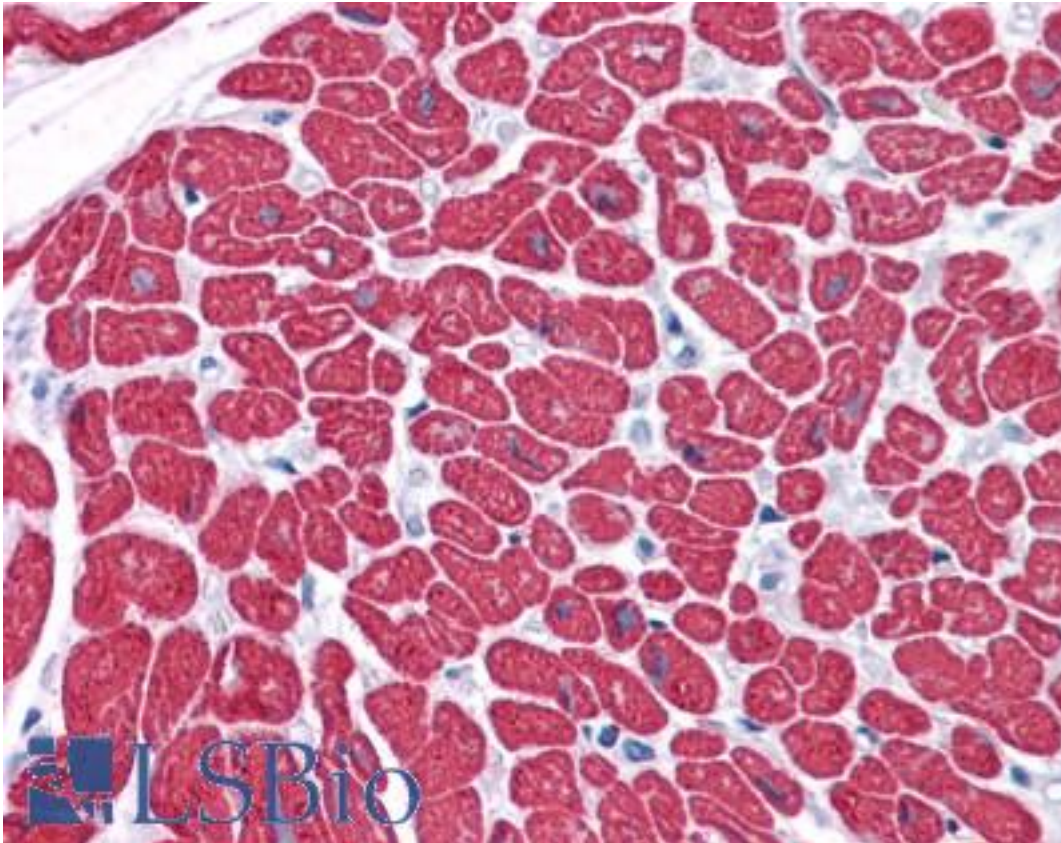
MYL3 Mouse anti-Human Monoclonal (3F8) Antibody - LS-B4113 - LSBio	
CatalogID:	LS-B4113
Validation:	This antibody replaces catalog number LS-C108754. It has been validated for use in the following assays: IHC-P.
Target:	myosin, light chain 3, alkali; ventricular, skeletal, slow (MYL3)
Synonyms:	MYL3 Antibody, CMH8 Antibody, Cardiac myosin light chain 1 Antibody, CMLC1 Antibody, Myosin, light chain 3, alkali Antibody, Myosin light chain 3 Antibody, Ventricular, skeletal, slow Antibody, VLC1 Antibody, MLC1SB Antibody, MLC1V Antibody
Host	MYL3 antibody was produced in Mouse
Clonality:	Monoclonal
Isotype:	IgG1
Clone Name:	3F8
Immunogen Species:	MYL3 antibody was raised against Human
Immunogen:	MYL3 antibody was raised against purified recombinant fragment of MYL3 expressed in <i>E. coli</i> .
Specificity:	Human MYL3
Reactivity:	Human
Purification:	Ascites
Presentation:	Ascites fluid, 0.03% sodium azide
Recommended Storage:	Long term: -20°C; Short term: +4°C. Avoid repeat freeze-thaw cycles.
Uses:	IHC - Paraffin (1:200), Western blot (1:500 - 1:2000), ELISA (1:10000) (Optimal dilution to be determined by the researcher)
Size:	50 µl

Immunohistochemistry Image:



Anti-MYL3 antibody IHC of human skeletal muscle. Immunohistochemistry of formalin-fixed, paraffin-embedded tissue after heat-induced antigen retrieval. Antibody LS-B4113 dilution 1:200.

Immunohistochemistry Image:



Anti-MYL3 antibody IHC of human heart. Immunohistochemistry of formalin-fixed, paraffin-embedded tissue after heat-induced antigen retrieval. Antibody LS-B4113 dilution 1:200.

Requested From:

Japan

Laboratory Reagent For In Vitro Research Use Only

Not for resale without prior written consent from LifeSpan BioSciences, Inc.

Created on 9/23/2014

© 2014 LifeSpan BioSciences