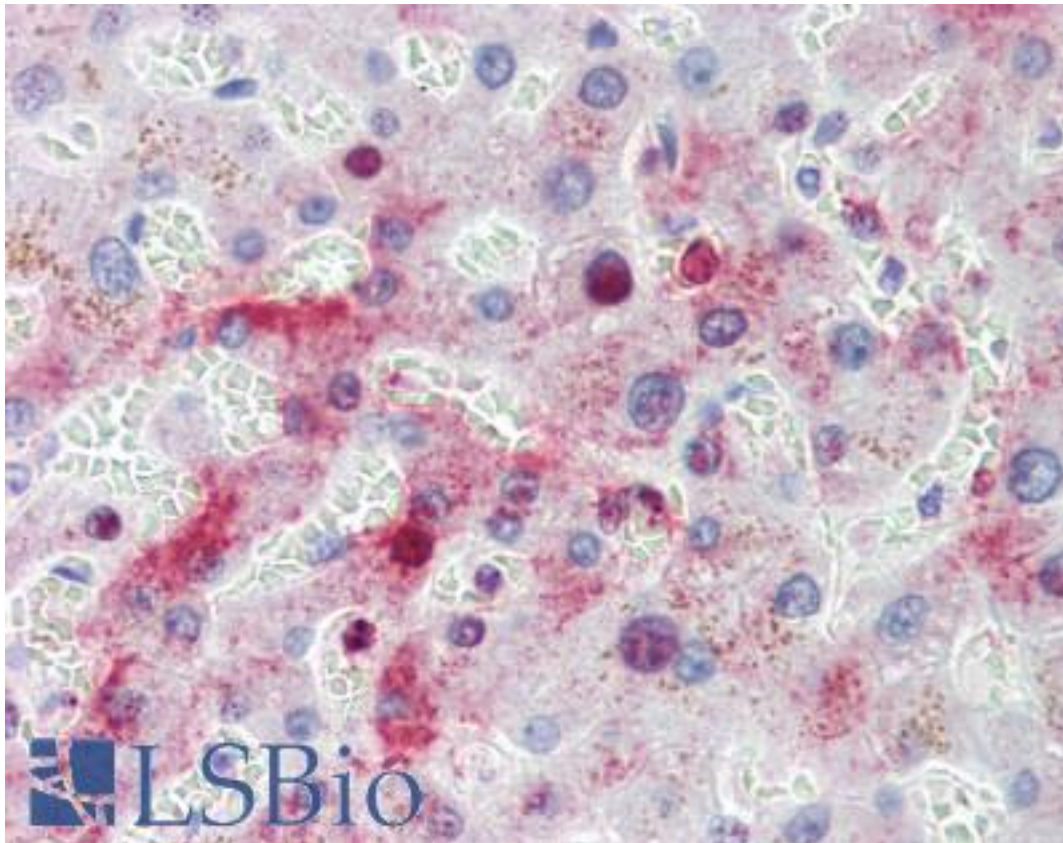


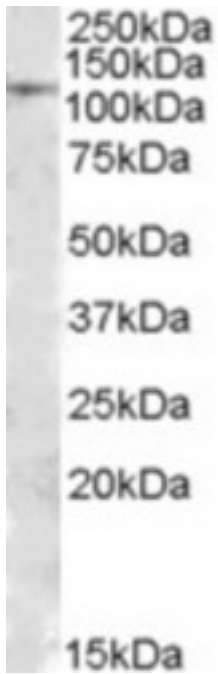
MTHFD1 Goat anti-Human Polyclonal (Internal) Antibody - LS-B4110 - LSBio	
<b>CatalogID:</b>	LS-B4110
<b>Validation:</b>	This antibody replaces catalog number LS-C87256. It has been validated for use in the following assays: IHC-P.
<b>Target:</b>	methylenetetrahydrofolate dehydrogenase (NADP+ dependent) 1, methenyltetrahydrofolate cyclohydrolase, formyltetrahydrofolate synthetase (MTHFD1)
<b>Synonyms:</b>	MTHFD1 Antibody, C1-THF synthase Antibody, MTHFC Antibody, MTHFD Antibody
<b>Host</b>	MTHFD1 antibody was produced in Goat
<b>Clonality:</b>	Polyclonal
<b>Immunogen Species:</b>	MTHFD1 antibody was raised against Human
<b>Antigen Type:</b>	Synthetic peptide
<b>Immunogen:</b>	MTHFD1 antibody was raised against synthetic peptide RGDLNDCFIPCTPK from an internal region of human MTHFD1 (NP_005947.2). Percent identity by BLAST analysis: Human, Gorilla, Orangutan, Gibbon, Monkey, Marmoset, Mouse, Hamster, Elephant, Panda, Bat, Horse, Rabbit, Pig (100%); Rat, Dog, Opossum, Turkey, Chicken, Lizard, Xenopus (93%); Bovine, Stickleback, Pufferfish, Zebrafish (86%).
<b>Specificity:</b>	Human MTHFD1.
<b>Epitope:</b>	Internal
<b>Reactivity:</b>	Human, Gorilla, Orangutan, Gibbon, Monkey, Mouse, Bat, Hamster, Horse, Pig, Rabbit
<b>Predicted Reactivity:</b>	Rat, Dog, Chicken, Xenopus
<b>Purification:</b>	Immunoaffinity purified
<b>Presentation:</b>	Tris-buffered saline, pH 7.3, 0.5% BSA, 0.02% sodium azide
<b>Recommended Storage:</b>	Store at -20°C. Minimize freezing and thawing.
<b>Usage Summary:</b>	Immunohistochemistry: LS-B4110 was validated for use in immunohistochemistry on a panel of 21 formalin-fixed, paraffin-embedded (FFPE) human tissues after heat induced antigen retrieval in pH 6.0 citrate buffer. After incubation with the primary antibody, slides were incubated with biotinylated secondary antibody, followed by alkaline phosphatase-streptavidin and chromogen. The stained slides were evaluated by a pathologist to confirm staining specificity. The optimal working concentration for LS-B4110 was determined to be 3.75 ug/ml. Peptide ELISA: antibody detection limit dilution 1:1000. Western Blot: Approx. 110kD band observed in Human Brain (substantia nigra) lysates (calculated MW of 102kD according to NP_005947.2). Recommended concentration: 1-3 ug/ml.
<b>Uses:</b>	IHC - Paraffin (3.75 µg/ml), Western blot (1 - 3 µg/ml), ELISA (1:1000) (Optimal dilution to be determined by the researcher)
<b>Size:</b>	50 µg
<b>Concentration:</b>	0.5 mg/ml

**Immunohistochemistry Image:**



Anti-MTHFD1 antibody IHC of human liver. Immunohistochemistry of formalin-fixed, paraffin-embedded tissue after heat-induced antigen retrieval. Antibody LS-B4110 concentration 3.75 ug/ml.

**Western Blot Image:**



Antibody (1 ug/ml) staining of Human Substantia Nigra lysate (35 ug protein in RIPA buffer).  
Primary incubation was 1 hour. Detected by chemiluminescence.

**Requested From:**

Japan

Laboratory Reagent For In Vitro Research Use Only

Not for resale without prior written consent from LifeSpan BioSciences, Inc.

Created on 9/23/2014

© 2014 LifeSpan BioSciences