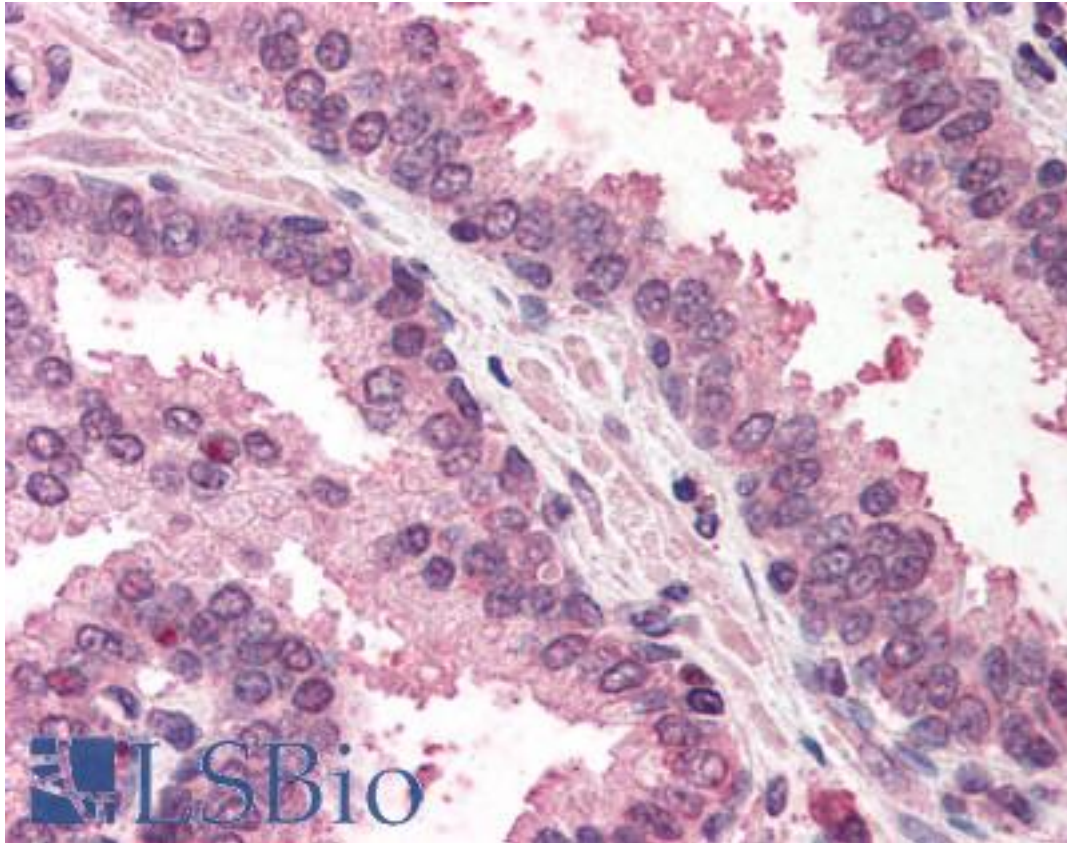


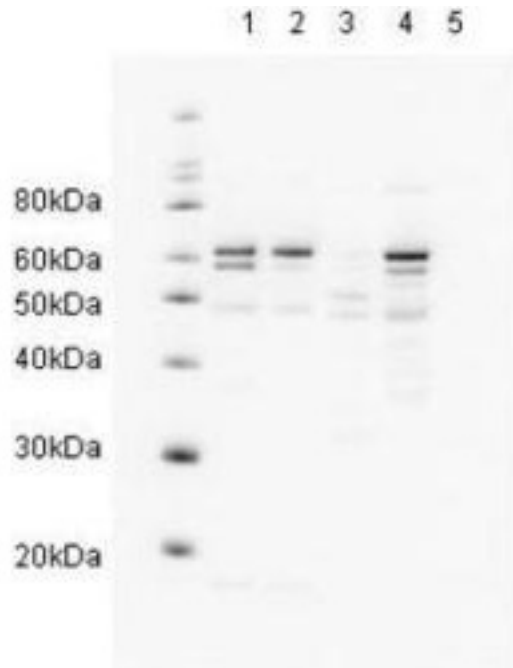
RAD23A / HHR23A Goat anti-Human Polyclonal (aa122-135) Antibody - LS-B411 - LSBio	
<b>CatalogID:</b>	LS-B411
<b>Validation:</b>	This antibody replaces catalog number LS-C18915. It has been validated for use in the following assays: IHC.
<b>Target:</b>	RAD23 homolog A ( <i>S. cerevisiae</i> ) (RAD23A)
<b>Synonyms:</b>	RAD23A Antibody, HR23A Antibody, HHR23A Antibody, RAD23, yeast homolog, A Antibody
<b>Host</b>	RAD23A antibody was produced in Goat
<b>Clonality:</b>	Polyclonal
<b>Immunogen Species:</b>	RAD23A / HHR23A antibody was raised against Human
<b>Antigen Type:</b>	Synthetic peptide
<b>Immunogen:</b>	RAD23A / HHR23A antibody was raised against synthetic peptide from human RAD23A / HHR23A.
<b>Specificity:</b>	aa 122-135 of human HR23A protein.
<b>Epitope:</b>	aa122-135
<b>Reactivity:</b>	Human
<b>Purification:</b>	Immunoaffinity purified
<b>Presentation:</b>	0.02 M potassium phosphate, 0.15 M sodium chloride, pH 7.2, 0.01% sodium azide.
<b>Recommended Storage:</b>	+4°C or -20°C, Avoid repeated freezing and thawing.
<b>Usage Summary:</b>	Immunohistochemistry: LS-B411 was validated for use in immunohistochemistry on a panel of 21 formalin-fixed, paraffin-embedded (FFPE) human tissues after heat induced antigen retrieval in pH 6.0 citrate buffer. After incubation with the primary antibody, slides were incubated with biotinylated secondary antibody, followed by alkaline phosphatase-streptavidin and chromogen. The stained slides were evaluated by a pathologist to confirm staining specificity. The optimal working concentration for LS-B411 was determined to be 5 ug/ml.
<b>Uses:</b>	IHC - Paraffin (5 µg/ml), Immunofluorescence, Western blot (1:500 - 1:2000), ELISA (1:4000 - 1:16000) (Optimal dilution to be determined by the researcher)
<b>Size:</b>	50 µg

**Immunohistochemistry Image:**



Anti-RAD23A / HHR23A antibody IHC of human prostate. Immunohistochemistry of formalin-fixed, paraffin-embedded tissue after heat-induced antigen retrieval. Antibody LS-B411 concentration 5 ug/ml.

**Western Blot Image:**



Anti-HR23A Antibody - Western Blot. Western blot showing Affinity Purified anti-HR23A antibody detects endogenous human HR23A. Reactivity is shown against HeLa nuclear extract (lane 1) and HeLa (lane 2), A431 (lane 3), Jurkat (lane 4) and 293 whole cell lysates (lane 5). Comparison to a molecular weight marker (at left) indicates a band of ~60 kD corresponding to HR23A. The blot was incubated with a 1:500 dilution of the antibody at room temperature followed by detection using HRP conjugated Rb-a-Goat IgG and chemiluminescence reagent with a 30-min exposure time. Other detection systems will yield similar results.

**Requested From:**

Japan

Laboratory Reagent For In Vitro Research Use Only

Not for resale without prior written consent from LifeSpan BioSciences, Inc.

Created on 9/23/2014

© 2014 LifeSpan BioSciences