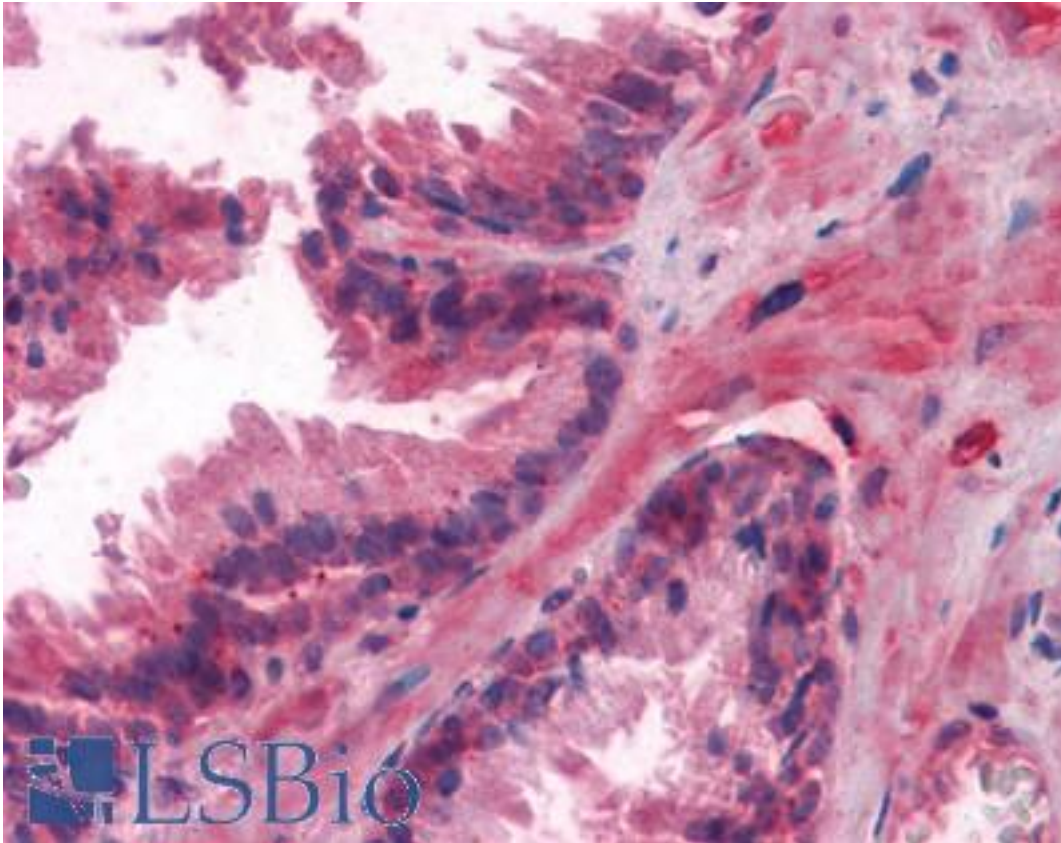


LCN1 Mouse anti-Human Monoclonal (10B10) Antibody - LS-B4108 - LSBio

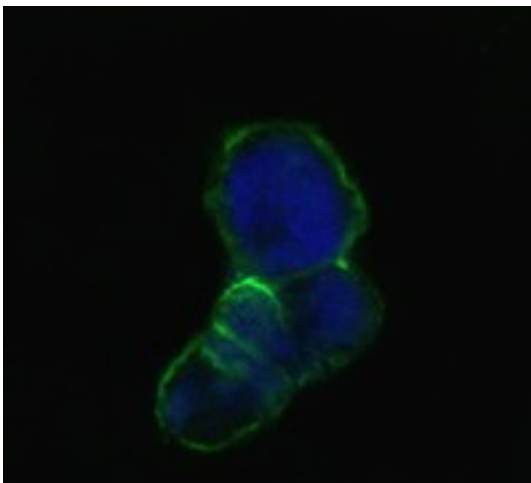
CatalogID:	LS-B4108
Validation:	This antibody replaces catalog number LS-C108833. It has been validated for use in the following assays: IHC-P.
Target:	lipocalin 1 (LCN1)
Synonyms:	LCN1 Antibody, Lipocalin 1 Antibody, Lipocalin-1 Antibody, Tear lipocalin Antibody, VEG protein Antibody, Von Ebner gland protein Antibody, PMFA Antibody, Tear prealbumin Antibody, Lipocalin 1 (tear prealbumin) Antibody, TLC Antibody, TP Antibody, VEGP Antibody
Host	LCN1 antibody was produced in Mouse
Clonality:	Monoclonal
Isotype:	IgG1
Clone Name:	10B10
Immunogen Species:	LCN1 antibody was raised against Human
Immunogen:	LCN1 antibody was raised against purified recombinant fragment of LCN1 expressed in <i>E. coli</i> .
Specificity:	Human LCN1
Reactivity:	Human
Purification:	Ascites
Presentation:	Ascites fluid, 0.03% sodium azide
Recommended Storage:	Long term: -20°C; Short term: +4°C. Avoid repeat freeze-thaw cycles.
Uses:	IHC - Paraffin (1:200), Immunofluorescence (1:200 - 1:1000), Western blot (1:500 - 1:2000), ELISA (1:10000) (Optimal dilution to be determined by the researcher)
Size:	50 µl

Immunohistochemistry Image:



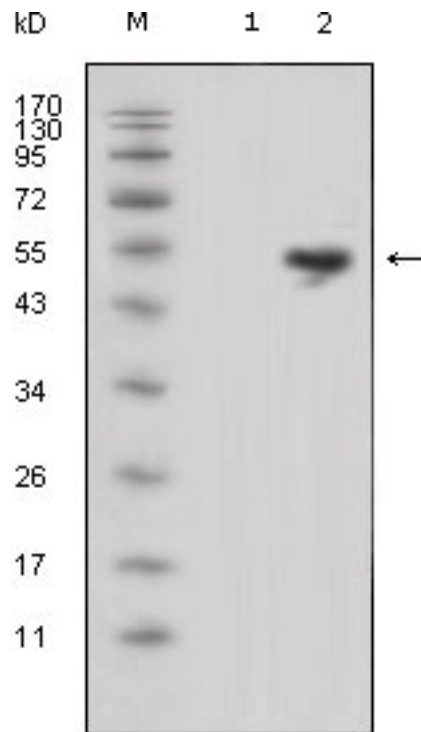
Anti-LCN1 antibody IHC of human prostate. Immunohistochemistry of formalin-fixed, paraffin-embedded tissue after heat-induced antigen retrieval. Antibody LS-B4108 dilution 1:200.

Immunocytochemistry Image:



Confocal immunofluorescence of methanol-fixed HEK293 cells transfected with LCN1-hlgGfc using anti-LCN1 monoclonal antibody (green), showing membrane localization. Blue: DRAQ5 fluorescent DNA dye.

Western Blot Image:



Western blot of anti-LCN1 monoclonal antibody against HEK2993 (1) and LCN1-hlgGfc transfected HEK2993 cell lysate(2).

Requested From:

Japan

Laboratory Reagent For In Vitro Research Use Only

Not for resale without prior written consent from LifeSpan BioSciences, Inc.

Created on 9/23/2014

© 2014 LifeSpan BioSciences