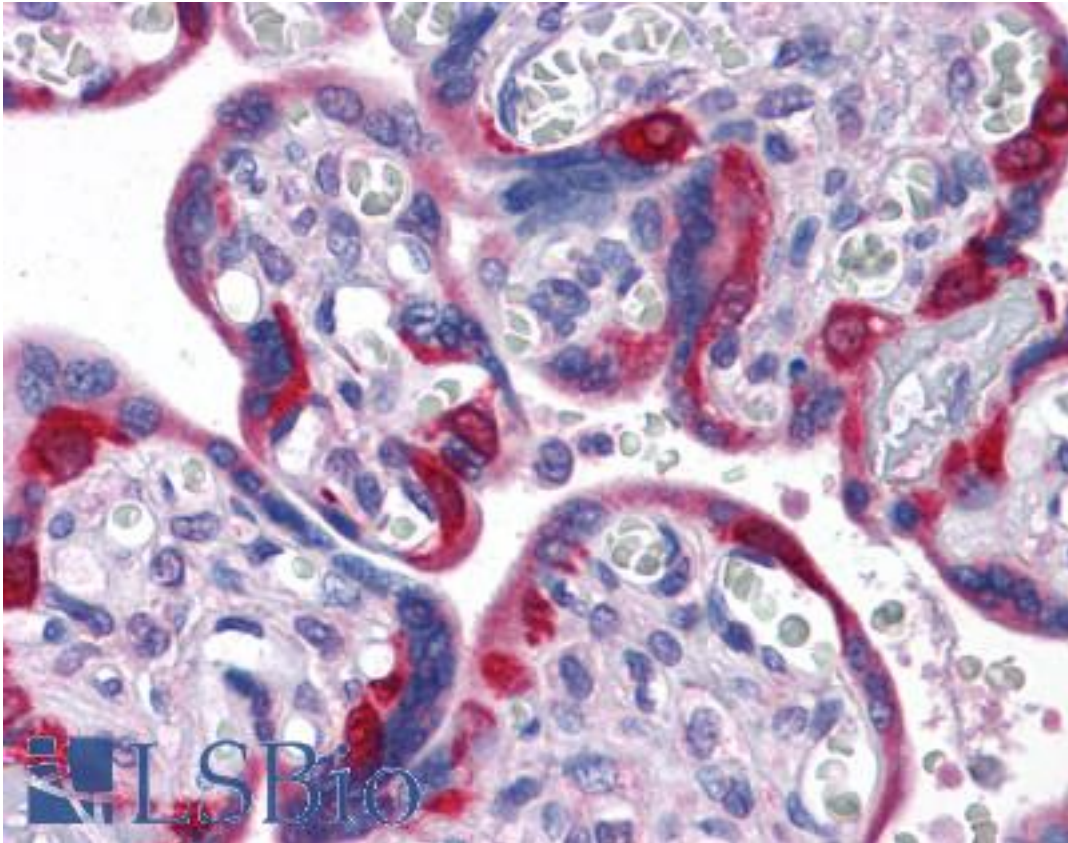


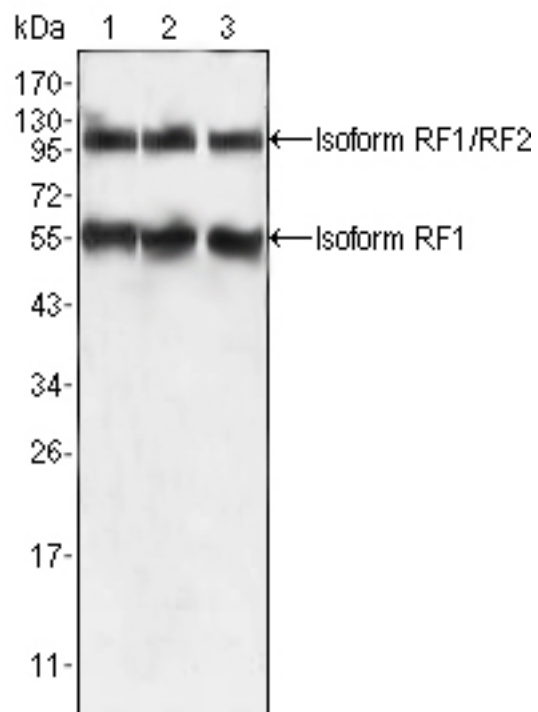
EDR / PEG10 Mouse anti-Human Monoclonal (4C10A7) Antibody - LS-B4105 - LSBio	
<b>CatalogID:</b>	LS-B4105
<b>Validation:</b>	This antibody replaces catalog number LS-C108856. It has been validated for use in the following assays: IHC-P.
<b>Target:</b>	paternally expressed 10 (PEG10)
<b>Synonyms:</b>	PEG10 Antibody, HB-1 Antibody, MART2 Antibody, Mar2 Antibody, MEF3 like 1 Antibody, MEF3-like protein 1 Antibody, MEF3L1 Antibody, KIAA1051 Antibody, RGAG3 Antibody, MEF3L Antibody, Ty3/Gypsy-like protein Antibody, EDR Antibody, Paternally expressed 10 Antibody
<b>Host</b>	PEG10 antibody was produced in Mouse
<b>Clonality:</b>	Monoclonal
<b>Isotype:</b>	IgG1
<b>Clone Name:</b>	4C10A7
<b>Immunogen Species:</b>	EDR / PEG10 antibody was raised against Human
<b>Immunogen:</b>	EDR / PEG10 antibody was raised against purified recombinant fragment of human PEG10 expressed in <i>E. coli</i> .
<b>Specificity:</b>	Human PEG10
<b>Reactivity:</b>	Human
<b>Purification:</b>	Ascites
<b>Presentation:</b>	Ascites fluid, 0.03% sodium azide
<b>Recommended Storage:</b>	Long term: -20°C; Short term: +4°C. Avoid repeat freeze-thaw cycles.
<b>Uses:</b>	IHC - Paraffin (1:200), Western blot (1:500 - 1:2000), ELISA (1:10000) (Optimal dilution to be determined by the researcher)
<b>Size:</b>	50 µl

**Immunohistochemistry Image:**



Anti-PEG10 antibody IHC of human placenta. Immunohistochemistry of formalin-fixed, paraffin-embedded tissue after heat-induced antigen retrieval. Antibody LS-B4105 dilution 1:200.

**Western Blot Image:**



Western blot of anti-PEG10 mAb against HepG2 (1), SMMC-7721 (2) and A549 (3) cell lysate.

**Requested From:**

Japan

Laboratory Reagent For In Vitro Research Use Only

Not for resale without prior written consent from LifeSpan BioSciences, Inc.

Created on 9/23/2014

© 2014 LifeSpan BioSciences