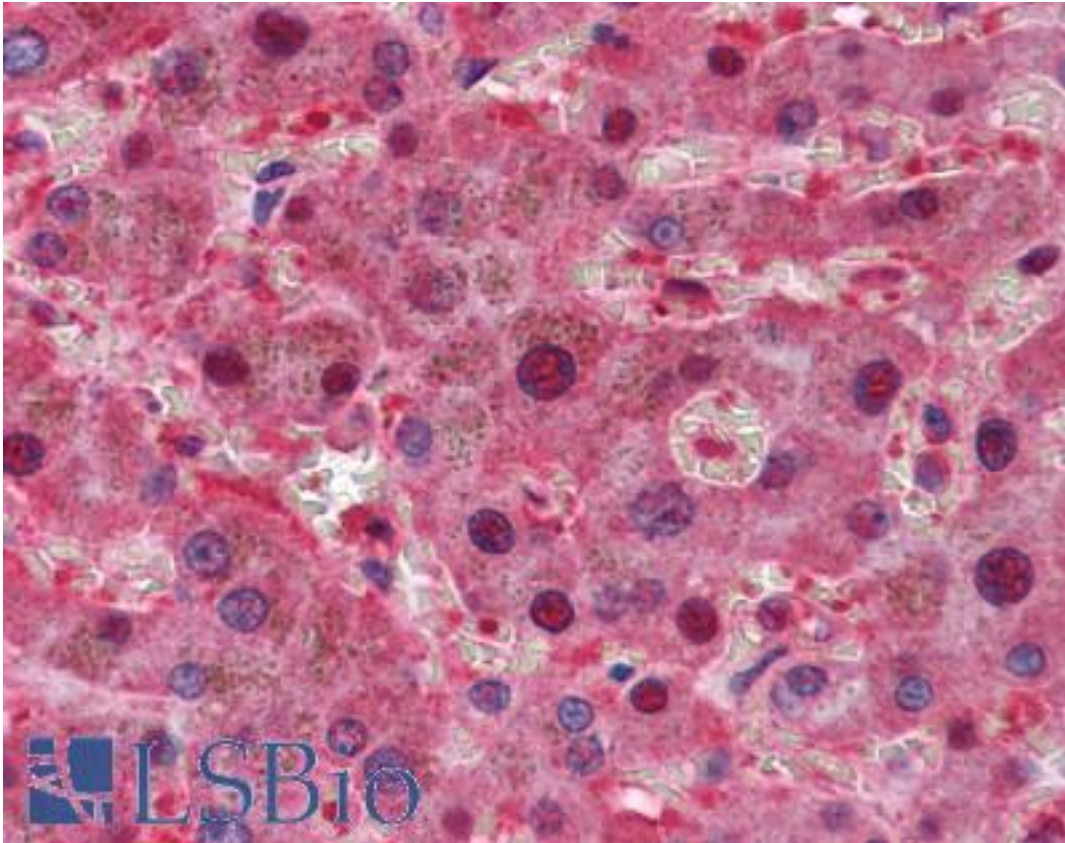


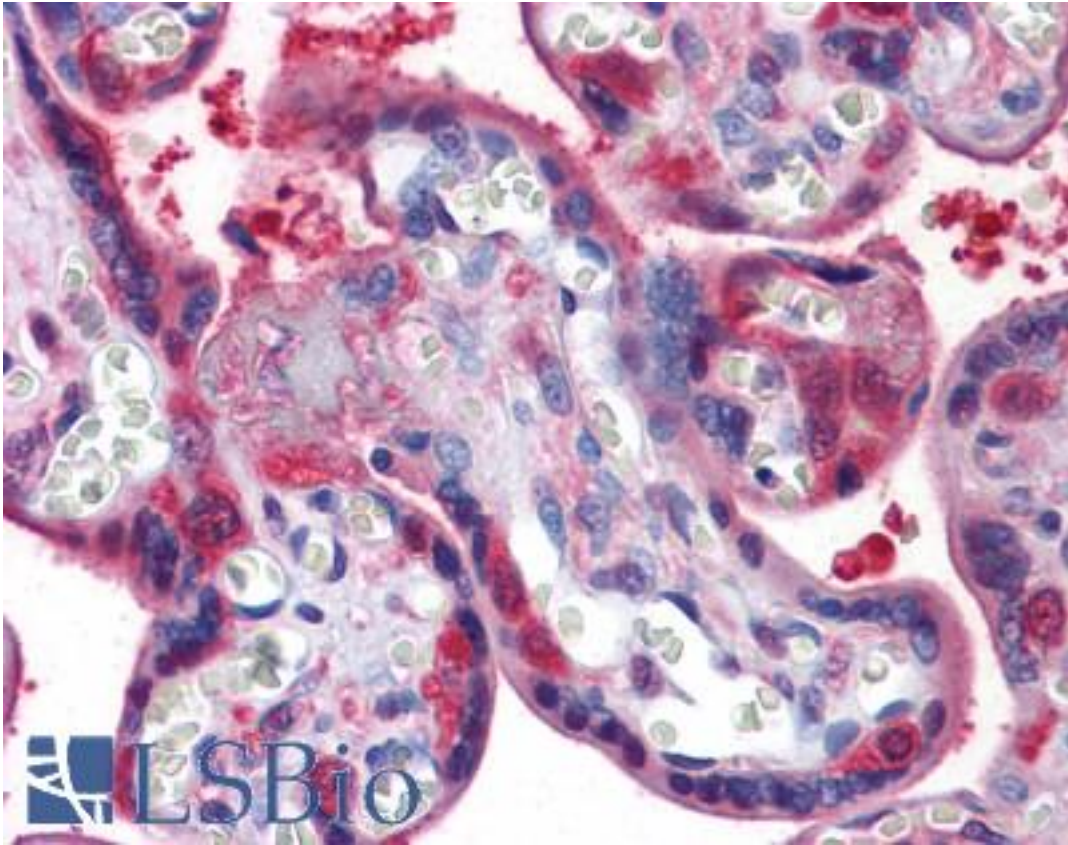
LPA / Lipoprotein a Mouse anti-Human Monoclonal (8F6A9,8H5C5) Antibody - LS-B4103 - LSBio	
<b>CatalogID:</b>	LS-B4103
<b>Validation:</b>	This antibody replaces catalog number LS-C109103. It has been validated for use in the following assays: IHC-P.
<b>Target:</b>	lipoprotein, Lp(a) (LPA)
<b>Synonyms:</b>	LPA Antibody, AK38 Antibody, Apo(a) Antibody, Antiangiogenic AK38 protein Antibody, Apolipoprotein(a) Antibody, Apolipoprotein (a) Antibody, Lipoprotein a Antibody, Lipoprotein (a) Antibody, Lp(a) Antibody, APOA Antibody, Lipoprotein, Lp(a) Antibody
<b>Family / Subfamily:</b>	Protease / Serine S1
<b>Host</b>	LPA antibody was produced in Mouse
<b>Clonality:</b>	Monoclonal
<b>Isotype:</b>	IgG1
<b>Clone Name:</b>	8F6A9,8H5C5
<b>Immunogen Species:</b>	LPA / Lipoprotein a antibody was raised against Human
<b>Immunogen:</b>	LPA / Lipoprotein a antibody was raised against purified recombinant fragment of LPA(4330-4521) expressed in E. coli.
<b>Specificity:</b>	Human LPA
<b>Reactivity:</b>	Human
<b>Purification:</b>	Ascites
<b>Presentation:</b>	Ascites fluid, 0.03% sodium azide. Sourced in Ascites.
<b>Recommended Storage:</b>	Long term: -20°C; Short term: +4°C. Avoid repeat freeze-thaw cycles.
<b>Uses:</b>	IHC - Paraffin (1:200), Western blot (1:500 - 1:2000), ELISA (Optimal dilution to be determined by the researcher)
<b>Size:</b>	50 µl

**Immunohistochemistry Image:**



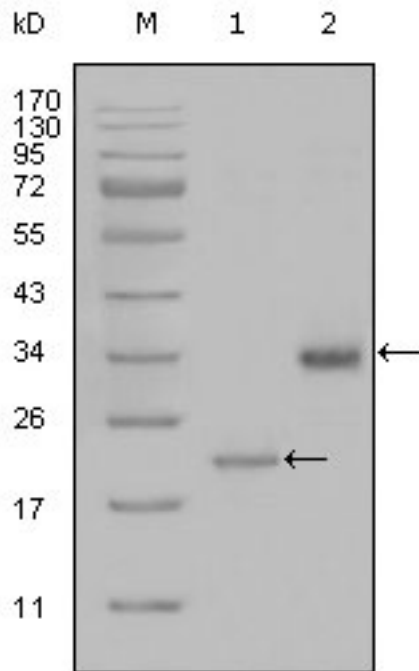
Anti-LPA antibody IHC of human liver. Immunohistochemistry of formalin-fixed, paraffin-embedded tissue after heat-induced antigen retrieval. Antibody LS-B4103 dilution 1:200.

**Immunohistochemistry Image:**



Anti-LPA antibody IHC of human placenta. Immunohistochemistry of formalin-fixed, paraffin-embedded tissue after heat-induced antigen retrieval. Antibody LS-B4103 dilution 1:200.

**Western Blot Image:**



Western blot of anti-LPA monoclonal antibody against truncated LPA-His recombinant protein(1) and truncated Trx-LPA(aa4330-4521) recombinant protein(2).

**Requested From:**

Japan

Laboratory Reagent For In Vitro Research Use Only

Not for resale without prior written consent from LifeSpan BioSciences, Inc.

Created on 9/23/2014

© 2014 LifeSpan BioSciences