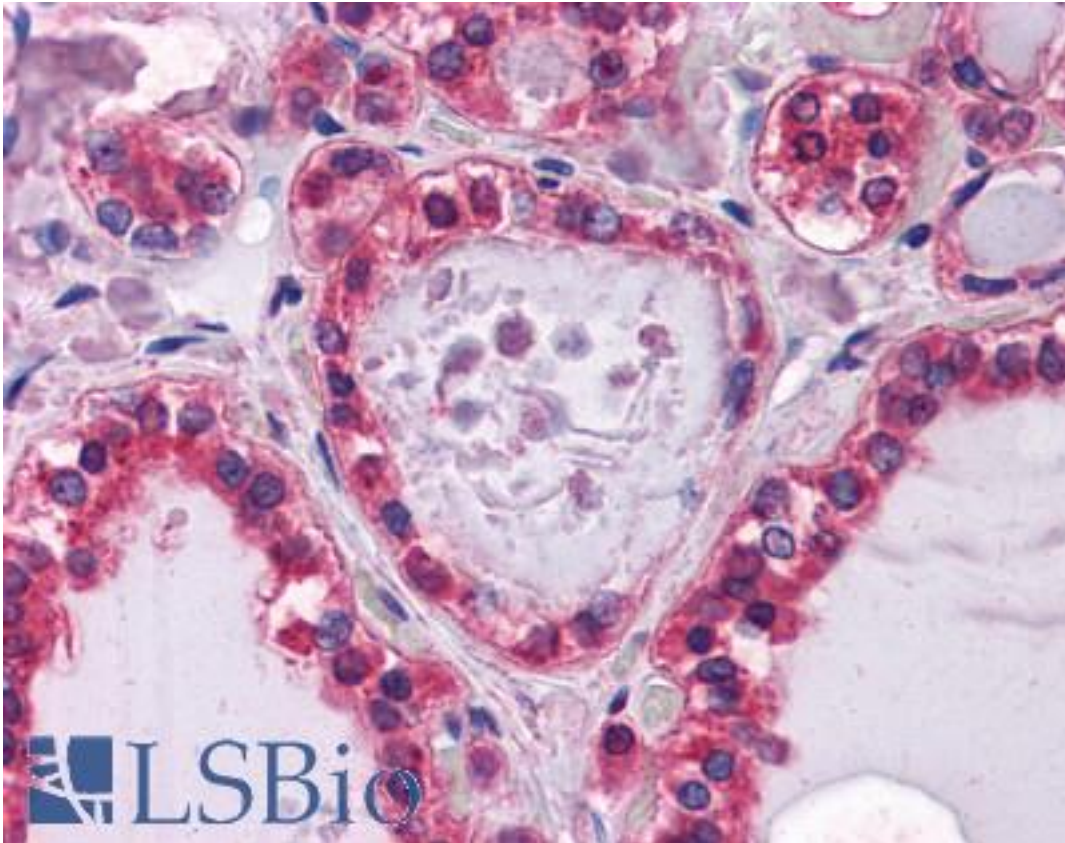


**LAMB1 / Laminin Beta 1 Mouse anti-Human Monoclonal (2D9G5) Antibody - LS-B4101 - LSBio**

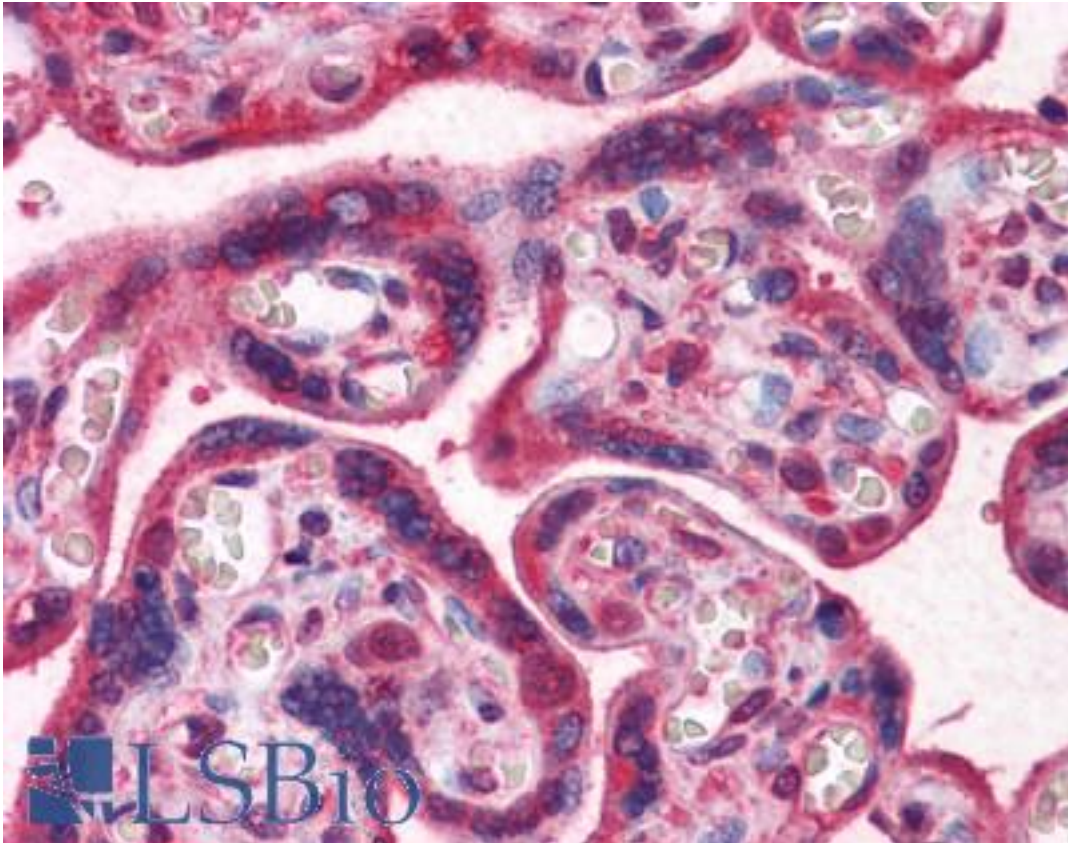
<b>CatalogID:</b>	LS-B4101
<b>Validation:</b>	This antibody replaces catalog number LS-C109102. It has been validated for use in the following assays: IHC-P.
<b>Target:</b>	laminin, beta 1 (LAMB1)
<b>Synonyms:</b>	LAMB1 Antibody, CLM Antibody, Laminin B1 chain Antibody, Laminin, beta 1 Antibody, Laminin-12 subunit beta Antibody, Laminin-6 subunit beta Antibody, Laminin-1 subunit beta Antibody, Laminin-8 subunit beta Antibody, Laminin beta-1 Antibody, Laminin beta-1 chain Antibody, Laminin subunit beta-1 Antibody, Laminin -10 subunit beta Antibody, Laminin-2 subunit beta Antibody
<b>Family / Subfamily:</b>	Laminin / not assigned-Laminin
<b>Host</b>	LAMB1 antibody was produced in Mouse
<b>Clonality:</b>	Monoclonal
<b>Isotype:</b>	IgG2a
<b>Clone Name:</b>	2D9G5
<b>Immunogen Species:</b>	LAMB1 / Laminin Beta 1 antibody was raised against Human
<b>Immunogen:</b>	LAMB1 / Laminin Beta 1 antibody was raised against purified recombinant fragment of LAMB1(aa31-270) expressed in E. coli.
<b>Specificity:</b>	Human LAMB1
<b>Reactivity:</b>	Human
<b>Purification:</b>	Ascites
<b>Presentation:</b>	Ascites fluid, 0.03% sodium azide
<b>Recommended Storage:</b>	Long term: -20°C; Short term: +4°C. Avoid repeat freeze-thaw cycles.
<b>Uses:</b>	IHC - Paraffin (1:200), Western blot (1:500 - 1:2000), ELISA (Optimal dilution to be determined by the researcher)
<b>Size:</b>	50 µl

**Immunohistochemistry Image:**



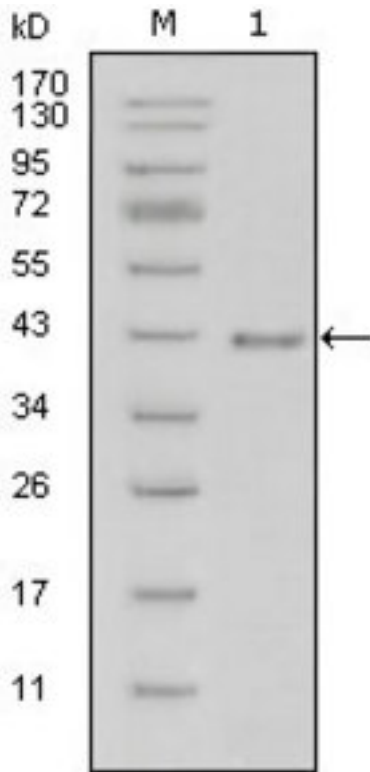
Anti-LAMB1 antibody IHC of human thyroid. Immunohistochemistry of formalin-fixed, paraffin-embedded tissue after heat-induced antigen retrieval. Antibody LS-B4101 dilution 1:200.

**Immunohistochemistry Image:**



Anti-LAMB1 antibody IHC of human placenta. Immunohistochemistry of formalin-fixed, paraffin-embedded tissue after heat-induced antigen retrieval. Antibody LS-B4101 dilution 1:200.

**Western Blot Image:**



Western blot of anti-LAMB1 monoclonal antibody against truncated LAMB1-His recombinant protein(1).

**Requested From:**

Japan

Laboratory Reagent For In Vitro Research Use Only

Not for resale without prior written consent from LifeSpan BioSciences, Inc.

Created on 9/23/2014

© 2014 LifeSpan BioSciences