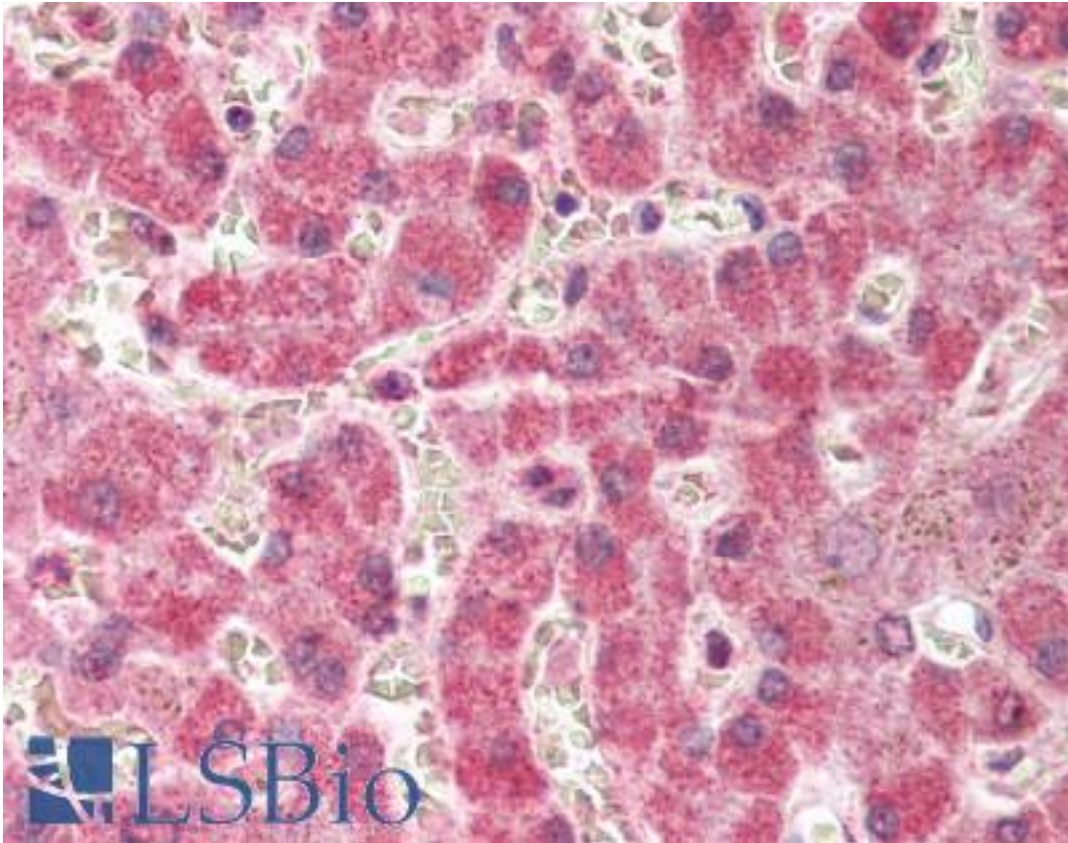


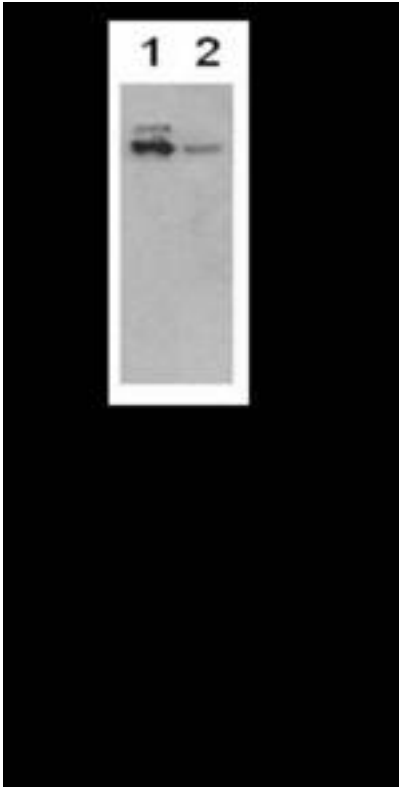
PTGS2 / COX2 / COX-2 Rabbit anti-Human Polyclonal (C-Terminus) Antibody - LS-B410 - LSBio	
CatalogID:	LS-B410
Validation:	This antibody replaces catalog number LS-C18875. It has been validated for use in the following assays: IHC.
Target:	prostaglandin-endoperoxide synthase 2 (prostaglandin G/H synthase and cyclooxygenase) (PTGS2)
Synonyms:	PTGS2 Antibody, COX-2 Antibody, Cyclooxygenase-2 Antibody, COX2 Antibody, Cyclooxygenase 2b Antibody, HCOX-2 Antibody, GRIPGHS Antibody, PGH synthase 2 Antibody, PGHS-2 Antibody, PHS II Antibody, PHS-2 Antibody, Prostaglandin H2 synthase 2 Antibody, PGG/HS Antibody, Prostaglandin G/H synthase 2 Antibody
Host	PTGS2 antibody was produced in Rabbit
Clonality:	Polyclonal
Immunogen Species:	PTGS2 / COX2 / COX-2 antibody was raised against Human
Immunogen:	PTGS2 / COX2 / COX-2 antibody was raised against fusion protein from human PTGS2 / COX-2.
Specificity:	GST fusion protein, the epitope of which maps to the carboxy-terminus of human Cox-2.
Epitope:	C-Terminus
Reactivity:	Human, Mouse, Rat
Purification:	Sterile filtered
Presentation:	0.01% sodium azide.
Recommended Storage:	+4°C or -20°C, Avoid repeated freezing and thawing.
Usage Summary:	Immunohistochemistry: LS-B410 was validated for use in immunohistochemistry on a panel of 21 formalin-fixed, paraffin-embedded (FFPE) human tissues after heat induced antigen retrieval in pH 6.0 citrate buffer. After incubation with the primary antibody, slides were incubated with biotinylated secondary antibody, followed by alkaline phosphatase-streptavidin and chromogen. The stained slides were evaluated by a pathologist to confirm staining specificity. The optimal working concentration for LS-B410 was determined to be 1:500.
Uses:	IHC - Paraffin (1:500), Western blot (1:5000 - 1:10000), ELISA (1:10000 - 1:50000) (Optimal dilution to be determined by the researcher)
Size:	50 µl

Immunohistochemistry Image:



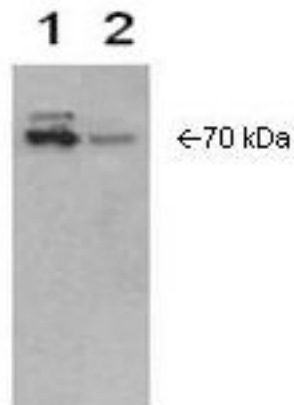
Anti-COX-2 antibody IHC of human liver. Immunohistochemistry of formalin-fixed, paraffin-embedded tissue after heat-induced antigen retrieval. Antibody LS-B410 dilution 1:500.

Western Blot Image:



Anti-Cox2 is shown to detect Cox-2 present in Cox-2 transfected Sf9 cell extract (lane 1) and IL-1b induced WISH cell extract (lane 2). Detection occurs using a 1:10,000 dilution of antibody.

Western Blot Image:



Anti-Cox2 Antibody - Western Blot. anti-Cox2 is shown to detect Cox-2 present in Cox-2 transfected Sf9 cell extract (lane 1) and IL-1beta induced WISH cell extract (lane 2). Detection occurs using a 1:10000 dilution of antibody followed by 1:10000 dilution of HRP Goat-a-Rabbit with visualization via ECL. Film exposure approximately 1. Other detection systems will yield similar results.

Requested From:

Japan

Laboratory Reagent For In Vitro Research Use Only

Not for resale without prior written consent from LifeSpan BioSciences, Inc.

Created on 9/23/2014

© 2014 LifeSpan BioSciences