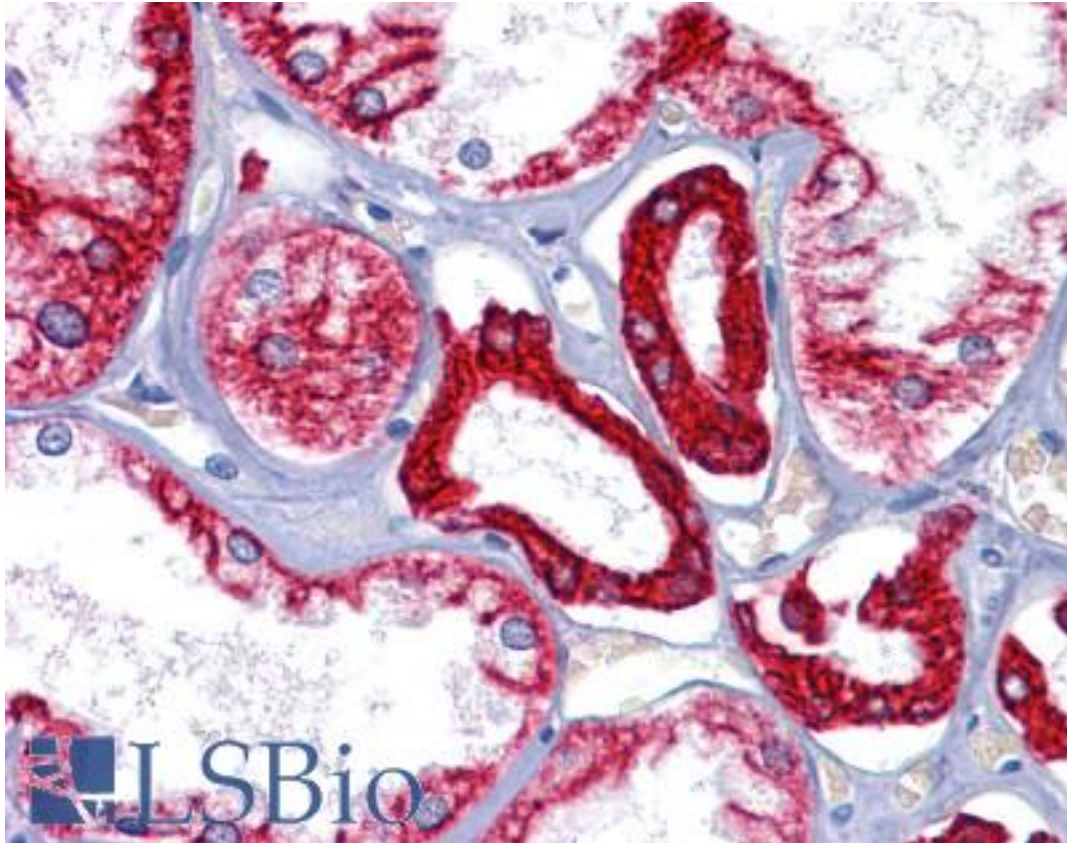


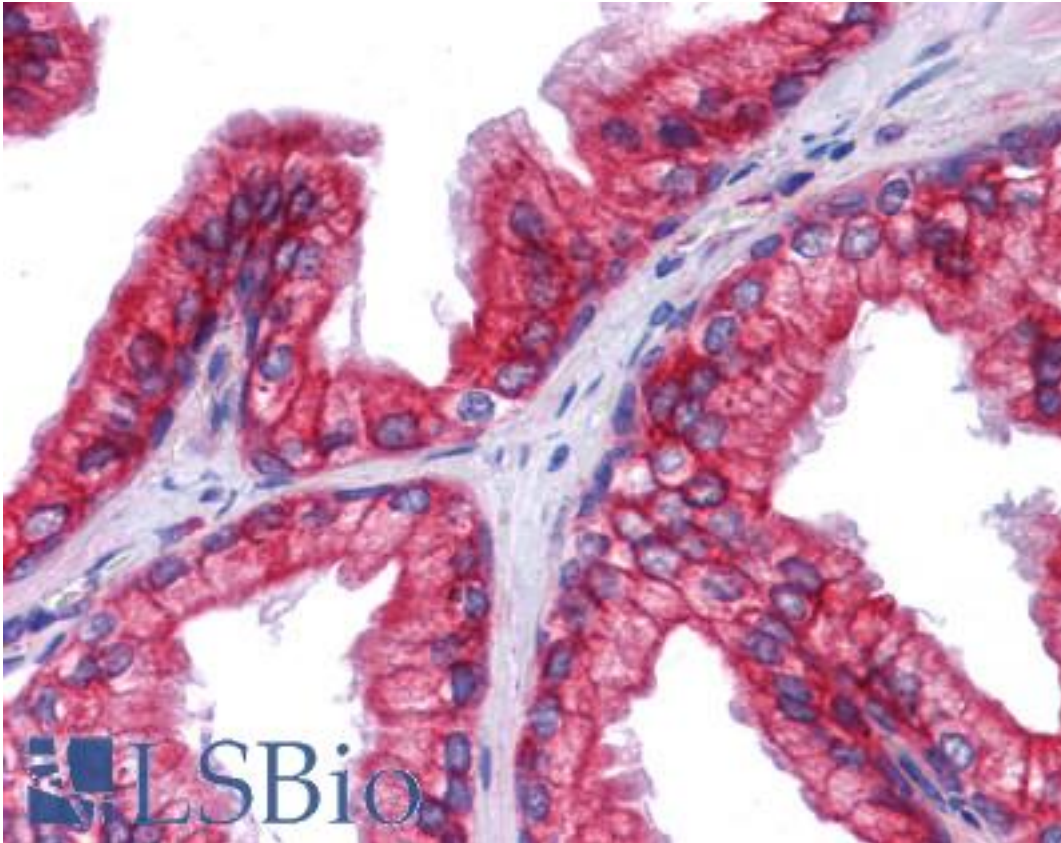
KRT8 / CK8 / Cytokeratin 8 Mouse anti-Human Monoclonal (8A5D12) Antibody - LS-B4099 - LSBio	
<b>CatalogID:</b>	LS-B4099
<b>Validation:</b>	This antibody replaces catalog number LS-C108790. It has been validated for use in the following assays: IHC-P.
<b>Target:</b>	keratin 8 (KRT8)
<b>Synonyms:</b>	KRT8 Antibody, CARD2 Antibody, CK-8 Antibody, CYK8 Antibody, Cytokeratin-8 Antibody, CK8 Antibody, K2C8 Antibody, K8 Antibody, KO Antibody, Keratin-8 Antibody, Type-II keratin Kb8 Antibody, Cytokeratin 8 Antibody, Keratin 8 Antibody
<b>Family / Subfamily:</b>	Keratin / not assigned-Keratin
<b>Host</b>	KRT8 antibody was produced in Mouse
<b>Clonality:</b>	Monoclonal
<b>Isotype:</b>	IgG1
<b>Clone Name:</b>	8A5D12
<b>Immunogen Species:</b>	KRT8 / CK8 / Cytokeratin 8 antibody was raised against Human
<b>Immunogen:</b>	KRT8 / CK8 / Cytokeratin 8 antibody was raised against purified recombinant fragment of human Cytokeratin (aa391-483) expressed in E. coli.
<b>Specificity:</b>	Human KRT8
<b>Reactivity:</b>	Human
<b>Purification:</b>	Ascites
<b>Presentation:</b>	Ascites fluid, 0.03% sodium azide
<b>Recommended Storage:</b>	Long term: -20°C; Short term: +4°C. Avoid repeat freeze-thaw cycles.
<b>Uses:</b>	IHC - Paraffin (1:200), Immunofluorescence (1:200 - 1:1000), Western blot (1:500 - 1:2000), ELISA (1:10000) (Optimal dilution to be determined by the researcher)
<b>Size:</b>	50 µl

**Immunohistochemistry Image:**



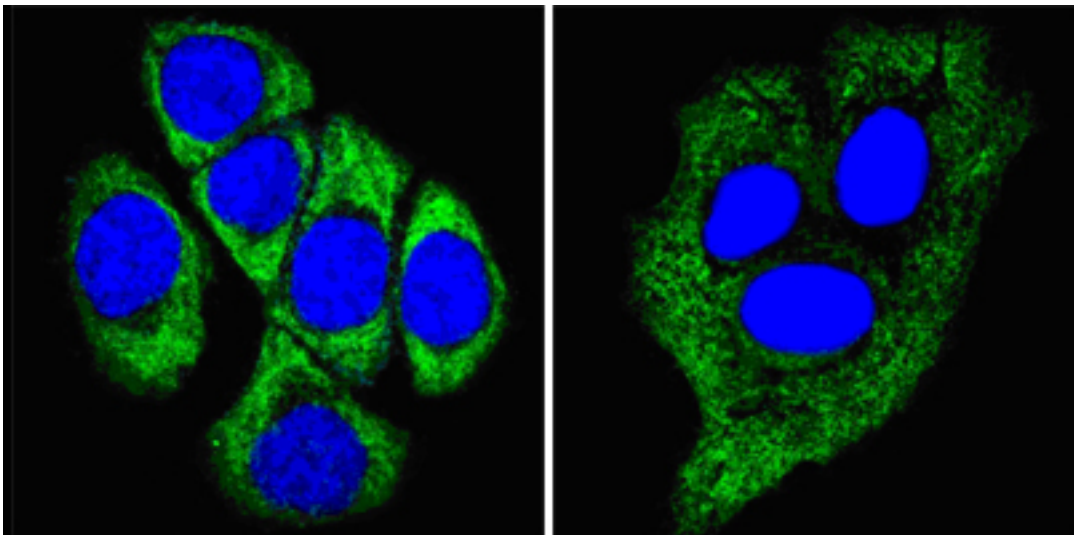
Anti-KRT8 / Cytokeratin 8 antibody IHC of human kidney. Immunohistochemistry of formalin-fixed, paraffin-embedded tissue after heat-induced antigen retrieval. Antibody LS-B4099 dilution 1:200.

**Immunohistochemistry Image:**



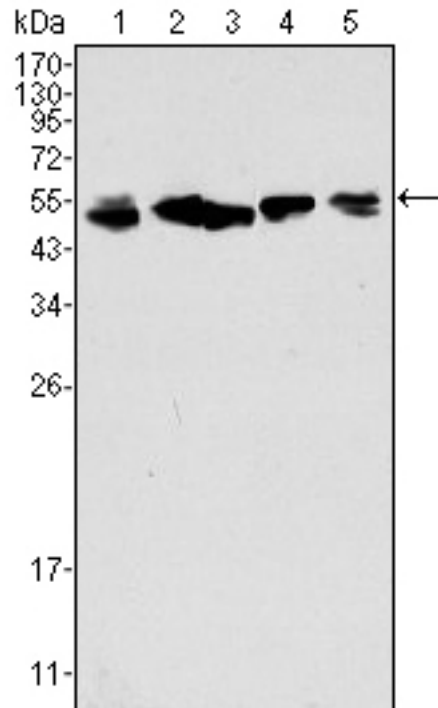
Anti-KRT8 / Cytokeratin 8 antibody IHC of human prostate. Immunohistochemistry of formalin-fixed, paraffin-embedded tissue after heat-induced antigen retrieval. Antibody LS-B4099 dilution 1:200.

**Western Blot Image:**



Confocal immunofluorescence of methanol-fixed ECA109 cells (left) and HepG2 cells (right) using anti-CK8 monoclonal antibody (green), showing cytoplasmic localization. Blue: DRAQ5 fluorescent DNA dye.

**Western Blot Image:**



Western blot of anti-CK8 monoclonal antibody against A549 (1), HeLa (2), MCF-7 (3), A431 (4) and HepG2 (5) cell lysate.

**Requested From:**

Japan

Laboratory Reagent For In Vitro Research Use Only

Not for resale without prior written consent from LifeSpan BioSciences, Inc.

Created on 9/23/2014

© 2014 LifeSpan BioSciences