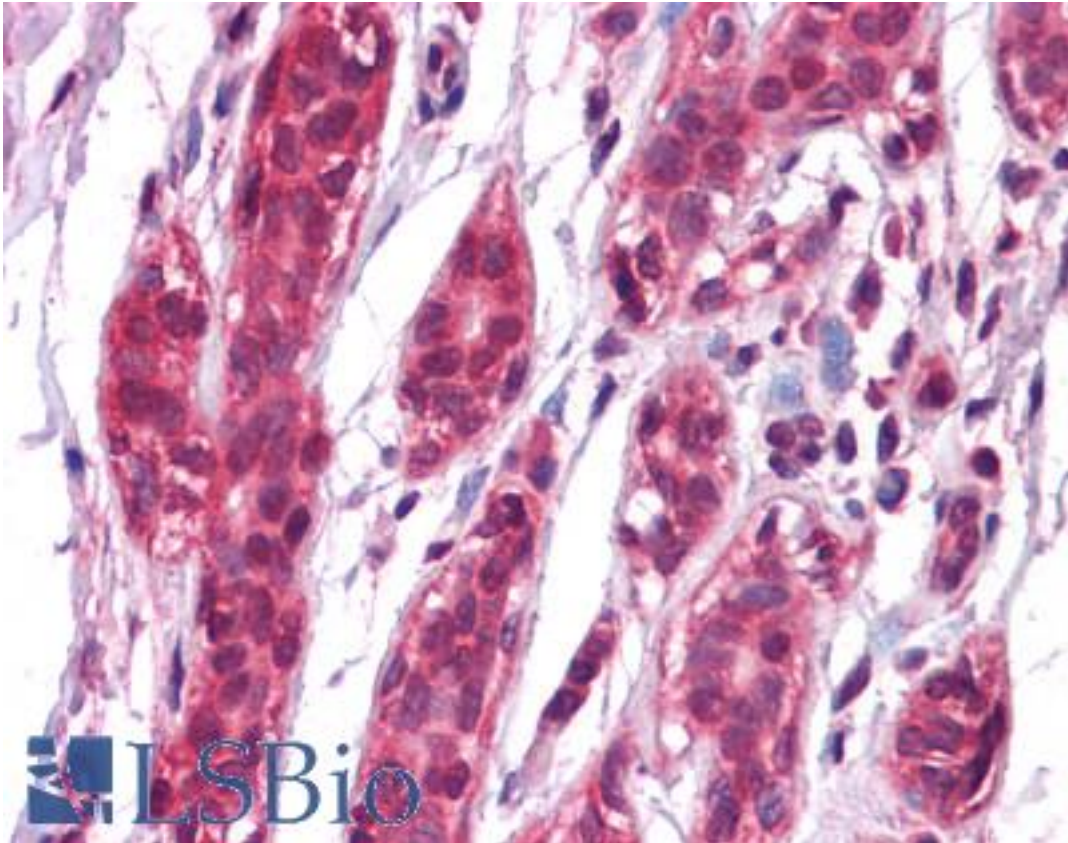


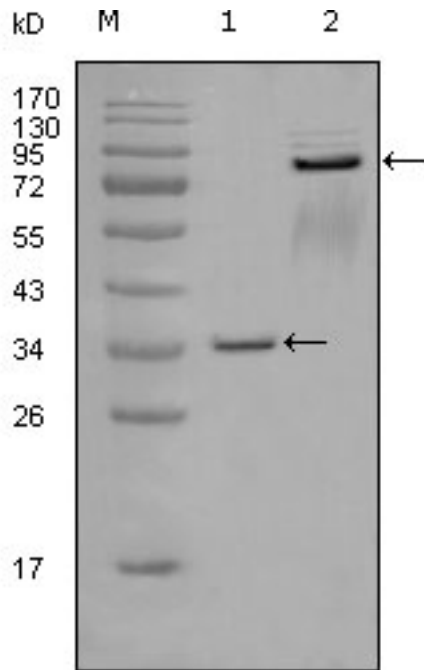
EPHA7 / EPH Receptor A6 Mouse anti-Human Monoclonal (6C8G7) Antibody - LS-B4098 - LSBio	
CatalogID:	LS-B4098
Validation:	This antibody replaces catalog number LS-C108800. It has been validated for use in the following assays: IHC-P.
Target:	EPH receptor A7 (EPHA7)
Synonyms:	EPHA7 Antibody, EHK-3 Antibody, EK11 Antibody, EPH homology kinase 3 Antibody, Eph homology kinase-3 Antibody, EPH receptor A7 Antibody, EHK3 Antibody, Ephrin type-A receptor 7 Antibody, MDK1 Antibody, Ebk Antibody, EPH-like kinase 11 Antibody, HEK11 Antibody
Family / Subfamily:	Protein Kinase / Ephrin Receptor
Host	EPHA7 antibody was produced in Mouse
Clonality:	Monoclonal
Isotype:	IgG2b
Clone Name:	6C8G7
Immunogen Species:	EPHA7 / EPH Receptor A6 antibody was raised against Human
Immunogen:	EPHA7 / EPH Receptor A6 antibody was raised against purified recombinant fragment of EphA7(aa27-210) expressed in E. coli.
Specificity:	Human EPHA7
Reactivity:	Human
Purification:	Ascites
Presentation:	Ascites fluid, 0.03% sodium azide
Recommended Storage:	Long term: -20°C; Short term: +4°C. Avoid repeat freeze-thaw cycles.
Uses:	IHC - Paraffin (1:200), Western blot (1:500 - 1:2000), ELISA (1:10000) (Optimal dilution to be determined by the researcher)
Size:	50 µl

Immunohistochemistry Image:



Anti-EPHA7 antibody IHC of human breast. Immunohistochemistry of formalin-fixed, paraffin-embedded tissue after heat-induced antigen retrieval. Antibody LS-B4098 dilution 1:200.

Western Blot Image:



Western blot of anti-EphA7 monoclonal antibody against truncated GST-EphA7 recombinant protein(1) and truncated EphA7(aa25-556)-hlgGfc transfected CHOK1 cell lysate (2).

Requested From:

Japan

Laboratory Reagent For In Vitro Research Use Only

Not for resale without prior written consent from LifeSpan BioSciences, Inc.

Created on 9/23/2014

© 2014 LifeSpan BioSciences