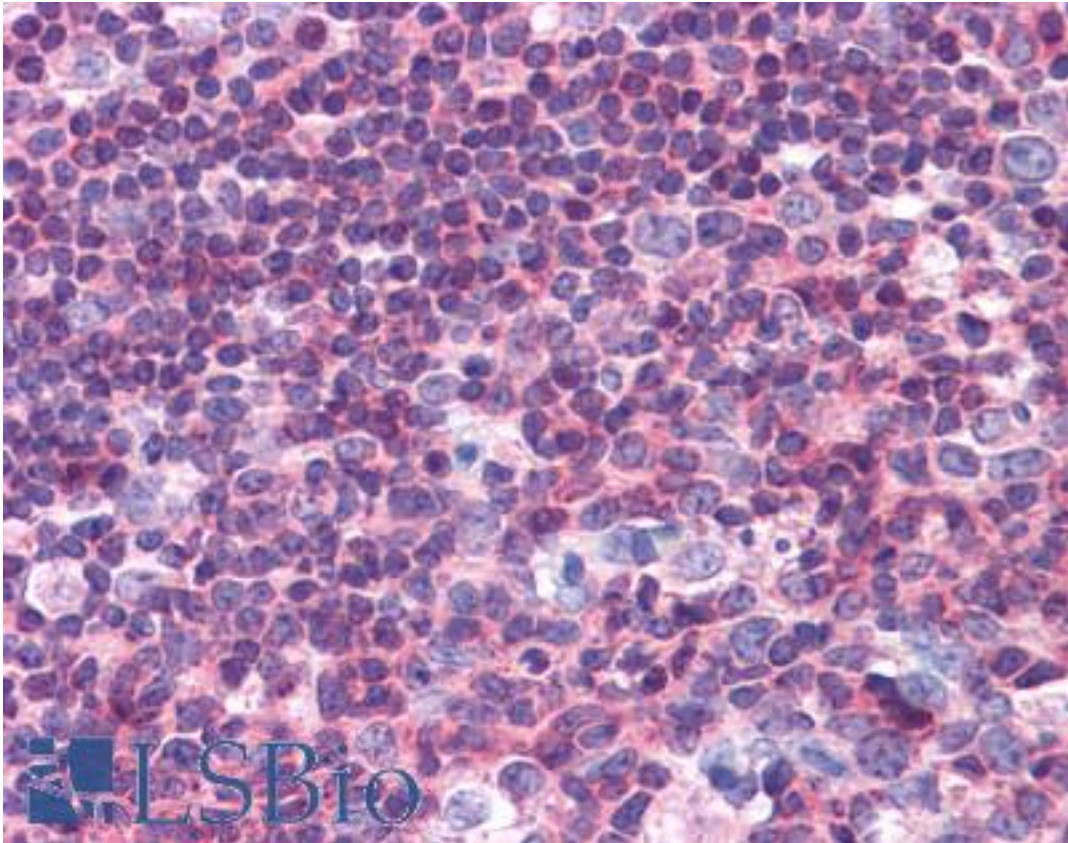


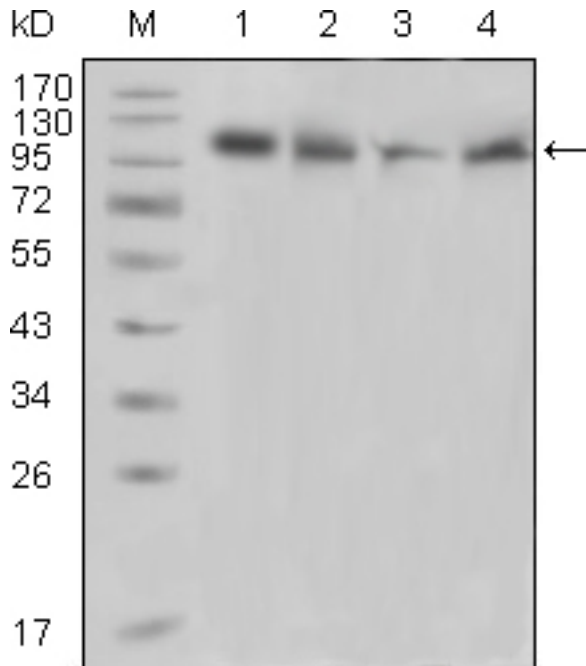
PTK2B / PYK2 Mouse anti-Human Monoclonal (5E2D5) Antibody - LS-B4093 - LSBio	
CatalogID:	LS-B4093
Validation:	This antibody replaces catalog number LS-C108863. It has been validated for use in the following assays: IHC-P.
Target:	protein tyrosine kinase 2 beta (PTK2B)
Synonyms:	PTK2B Antibody, CADTK Antibody, CAKB Antibody, Cell adhesion kinase beta Antibody, FADK 2 Antibody, FADK2 Antibody, Focal adhesion kinase 2 Antibody, FRNK Antibody, FAK2 Antibody, Proline-rich tyrosine kinase 2 Antibody, Protein-tyrosine kinase 2-beta Antibody, Protein kinase B Antibody, Protein tyrosine kinase 2 beta Antibody, PYK2 Antibody, RAFTK Antibody, CAK-beta Antibody, PKB Antibody, PTK Antibody
Family / Subfamily:	Protein Kinase / Focal Adhesion Kinase
Host	PTK2B antibody was produced in Mouse
Clonality:	Monoclonal
Isotype:	IgG2a
Clone Name:	5E2D5
Immunogen Species:	PTK2B / PYK2 antibody was raised against Human
Immunogen:	PTK2B / PYK2 antibody was raised against purified recombinant fragment of PYK2(aa815-997) expressed in E. coli.
Specificity:	Human PTK2B
Reactivity:	Human
Purification:	Ascites
Presentation:	Ascites fluid, 0.03% sodium azide. Sourced in Ascites.
Recommended Storage:	Long term: -20°C; Short term: +4°C. Avoid repeat freeze-thaw cycles.
Uses:	IHC - Paraffin (1:100 - 1:200), ICC, Immunofluorescence, Western blot (1:500 - 1:2000), ELISA (1:10000) (Optimal dilution to be determined by the researcher)
Size:	50 µl

Immunohistochemistry Image:



Anti-PTK2B / PYK2 antibody IHC of human tonsil. Immunohistochemistry of formalin-fixed, paraffin-embedded tissue after heat-induced antigen retrieval. Antibody LS-B4093 dilution 1:100.

Immunofluorescence Image:



Western blot of anti-PYK2 monoclonal antibody against Raji(1), PMA induced THP-1(2), Jurkat(3) and Ramos(4) cell lysate.

Requested From:

Japan

Laboratory Reagent For In Vitro Research Use Only

Not for resale without prior written consent from LifeSpan BioSciences, Inc.

Created on 9/23/2014

© 2014 LifeSpan BioSciences