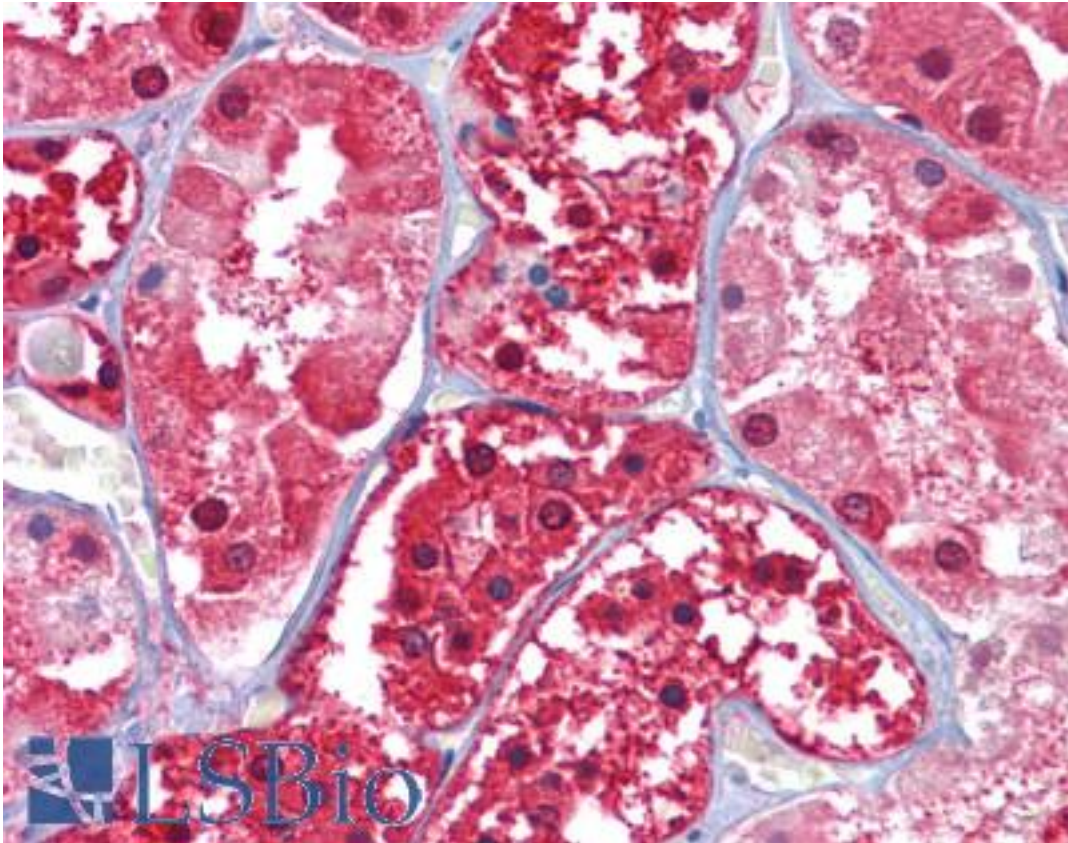


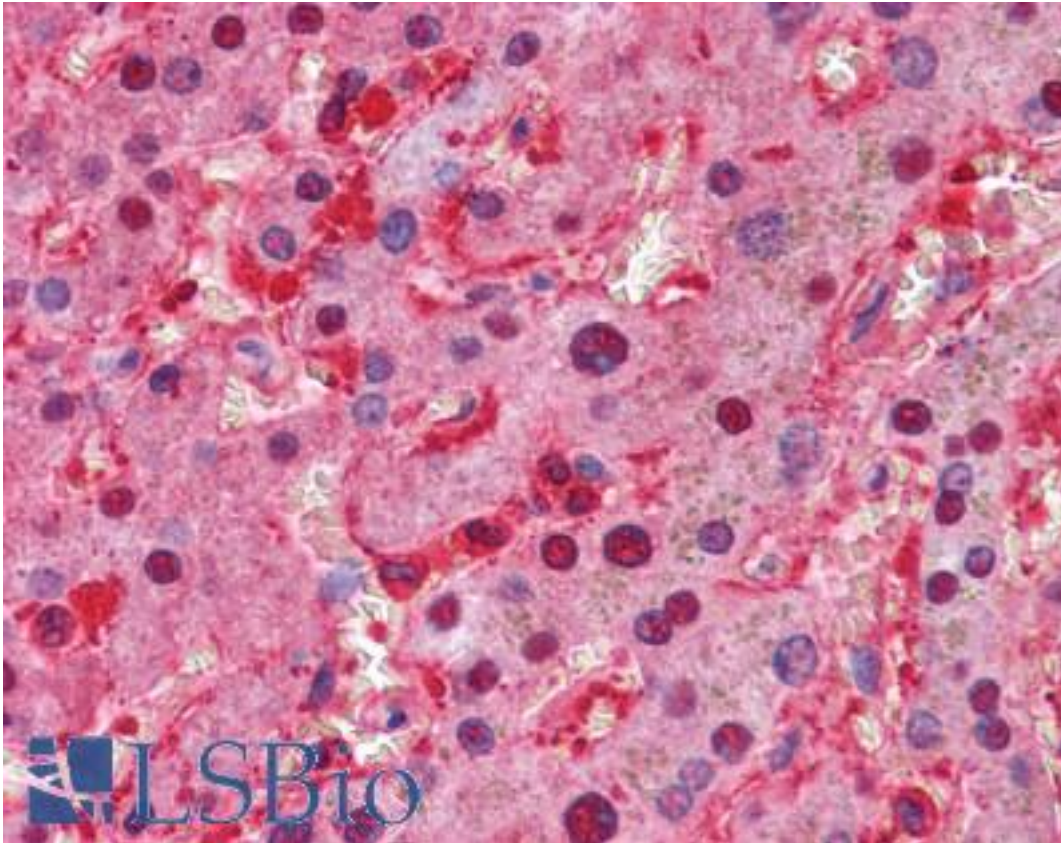
GPI Mouse anti-Human Monoclonal (1B7D7) Antibody - LS-B4092 - LSBio	
CatalogID:	LS-B4092
Validation:	This antibody replaces catalog number LS-C108742. It has been validated for use in the following assays: IHC-P.
Target:	glucose-6-phosphate isomerase (GPI)
Synonyms:	GPI Antibody, AMF Antibody, Autocrine motility factor Antibody, Glucose phosphate isomerase Antibody, Hexose monophosphate isomerase Antibody, Hexosephosphate isomerase Antibody, Neuroleukin Antibody, Oxoisomerase Antibody, Phosphoglucose isomerase Antibody, Phosphohexomutase Antibody, Phosphohexose isomerase Antibody, SA36 Antibody, PGI Antibody, SA-36 Antibody, Glucose-6-phosphate isomerase Antibody, GNPI Antibody, PHI Antibody, Phosphosaccharomutase Antibody, Sperm antigen 36 Antibody, Sperm antigen-36 Antibody
Host	GPI antibody was produced in Mouse
Clonality:	Monoclonal
Isotype:	IgG1
Clone Name:	1B7D7
Immunogen Species:	GPI antibody was raised against Human
Immunogen:	GPI antibody was raised against purified recombinant fragment of human GPI expressed in E. coli.
Specificity:	Human GPI
Reactivity:	Human
Purification:	Ascites
Presentation:	Ascites fluid, 0.03% sodium azide. Sourced in Ascites.
Recommended Storage:	Long term: -20°C; Short term: +4°C. Avoid repeat freeze-thaw cycles.
Uses:	IHC - Paraffin (1:200), Immunofluorescence (1:200 - 1:1000), Western blot (1:500 - 1:2000), ELISA (1:10000) (Optimal dilution to be determined by the researcher)
Size:	50 µl

Immunohistochemistry Image:



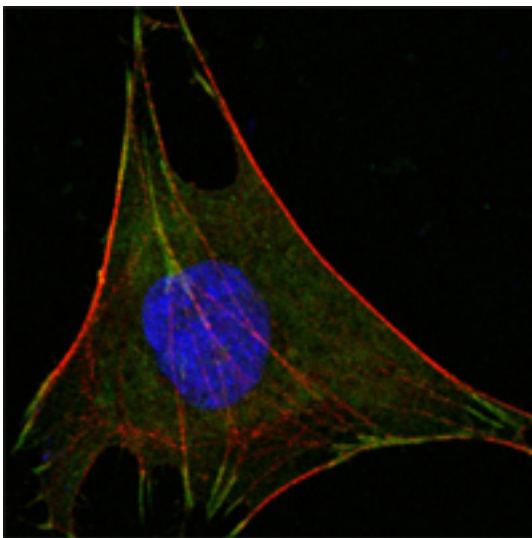
Anti-GPI antibody IHC of human kidney. Immunohistochemistry of formalin-fixed, paraffin-embedded tissue after heat-induced antigen retrieval. Antibody LS-B4092 dilution 1:200.

Immunohistochemistry Image:



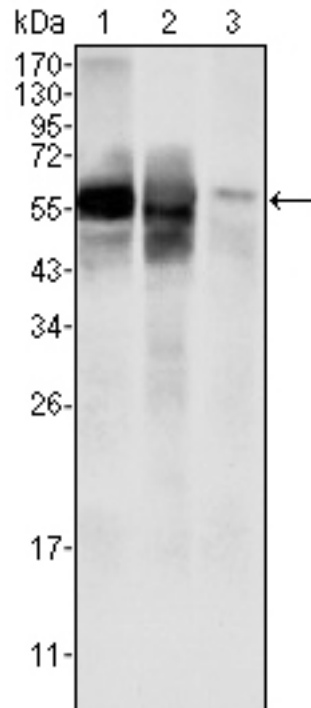
Anti-GPI antibody IHC of human liver. Immunohistochemistry of formalin-fixed, paraffin-embedded tissue after heat-induced antigen retrieval. Antibody LS-B4092 dilution 1:200.

Immunofluorescence Image:



Confocal immunofluorescence of L-02 cells using anti-GPI mAb (green). Red: Actin filaments have been labeled with DY-554 phalloidin. Blue: DRAQ5 fluorescent DNA dye.

Western Blot Image:



Western blot of anti-GPI mAb against HepG2 (1), SMMC-7721 (2) cell lysate and rat liver tissues lysate (3).

Requested From:

Japan

Laboratory Reagent For In Vitro Research Use Only

Not for resale without prior written consent from LifeSpan BioSciences, Inc.

Created on 9/23/2014

© 2014 LifeSpan BioSciences