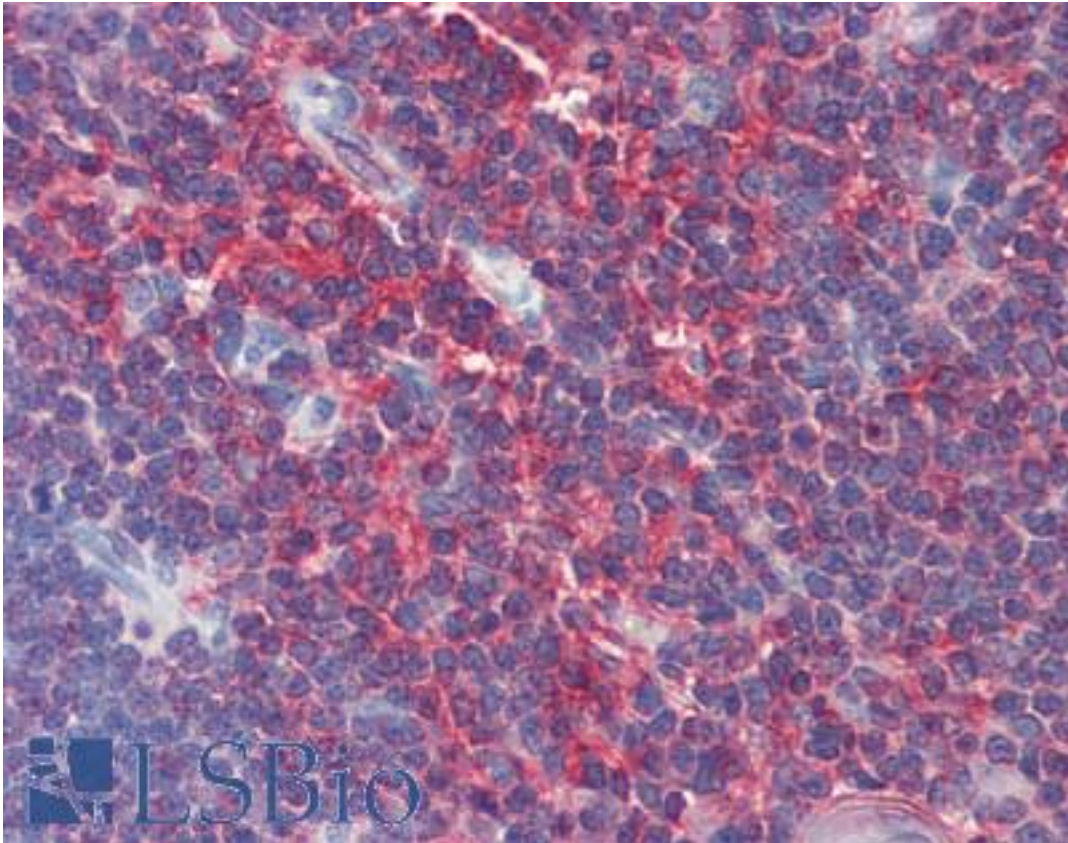


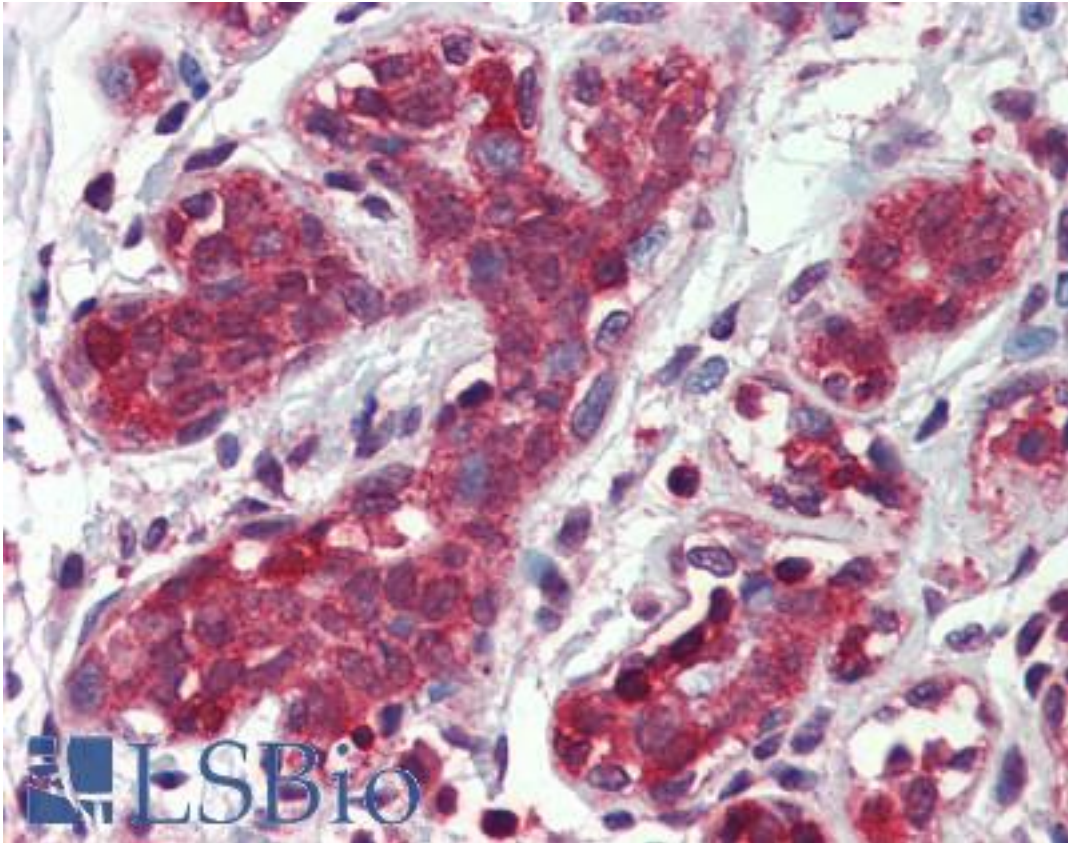
FANCC Rabbit anti-Human Polyclonal Antibody - LS-B4086 - LSBio	
<b>CatalogID:</b>	LS-B4086
<b>Validation:</b>	This antibody replaces catalog number LS-C109311. It has been validated for use in the following assays: IHC-P.
<b>Target:</b>	Fanconi anemia, complementation group C (FANCC)
<b>Synonyms:</b>	FANCC Antibody, FAC Antibody, Fanconi anemia group C protein Antibody, FA3 Antibody, Protein FACC Antibody, FACC Antibody
<b>Host</b>	FANCC antibody was produced in Rabbit
<b>Clonality:</b>	Polyclonal
<b>Immunogen Species:</b>	FANCC antibody was raised against Human
<b>Immunogen:</b>	FANCC antibody was raised against recombinant protein fragment containing a sequence corresponding to a region within amino acids 1 and 275 of FANCC.
<b>Specificity:</b>	Human and mouse FANCC.
<b>Reactivity:</b>	Human, Mouse
<b>Purification:</b>	Immunoaffinity purified
<b>Presentation:</b>	0.1 M Tris-glycine, pH 7, 10% Glycerol, 0.01% Thimerosal
<b>Recommended Storage:</b>	Aliquot and store at -20°C. Minimize freezing and thawing.
<b>Uses:</b>	IHC - Paraffin (10 µg/ml), ICC, Immunofluorescence (1:100 - 1:200), Western blot (1:500 - 1:3000) (Optimal dilution to be determined by the researcher)
<b>Size:</b>	50 µl
<b>Concentration:</b>	1 mg/ml

**Immunohistochemistry Image:**



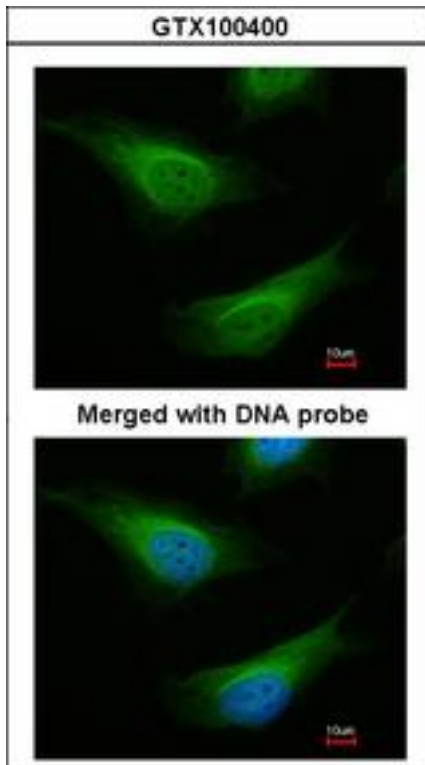
Anti-FANCC antibody IHC of human thymus. Immunohistochemistry of formalin-fixed, paraffin-embedded tissue after heat-induced antigen retrieval. Antibody LS-B4086 concentration 10 ug/ml.

**Immunohistochemistry Image:**



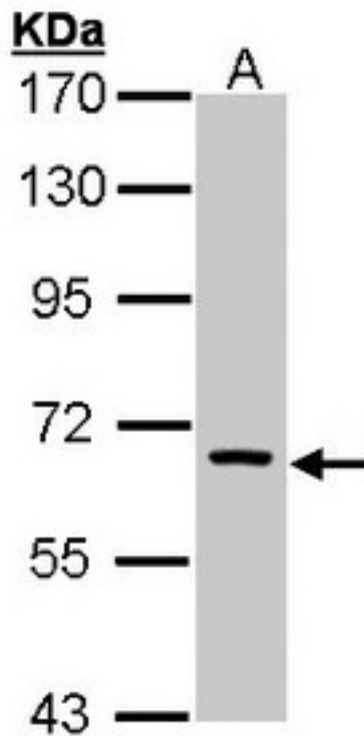
Anti-FANCC antibody IHC of human breast. Immunohistochemistry of formalin-fixed, paraffin-embedded tissue after heat-induced antigen retrieval. Antibody LS-B4086 concentration 10 ug/ml.

**Immunofluorescence Image:**



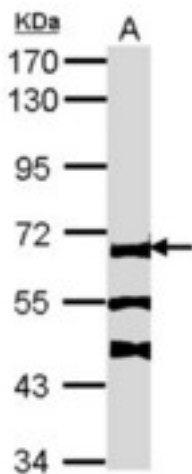
Immunofluorescence of paraformaldehyde-fixed HeLa, using FANCC antibody at 1:200 dilution.

**Western Blot Image:**



Sample (30 ug of whole cell lysate). A: H1299. 7.5% SDS PAGE. FANCC antibody diluted at 1:1000

**Western Blot Image:**



Sample (30 ug of whole cell lysate). A: NIH-3T3. 7.5% SDS PAGE. FANCC antibody. FANCC antibody diluted at 1:1000.

**Requested From:**

Japan

Laboratory Reagent For In Vitro Research Use Only

Not for resale without prior written consent from LifeSpan BioSciences, Inc.

Created on 9/23/2014

© 2014 LifeSpan BioSciences