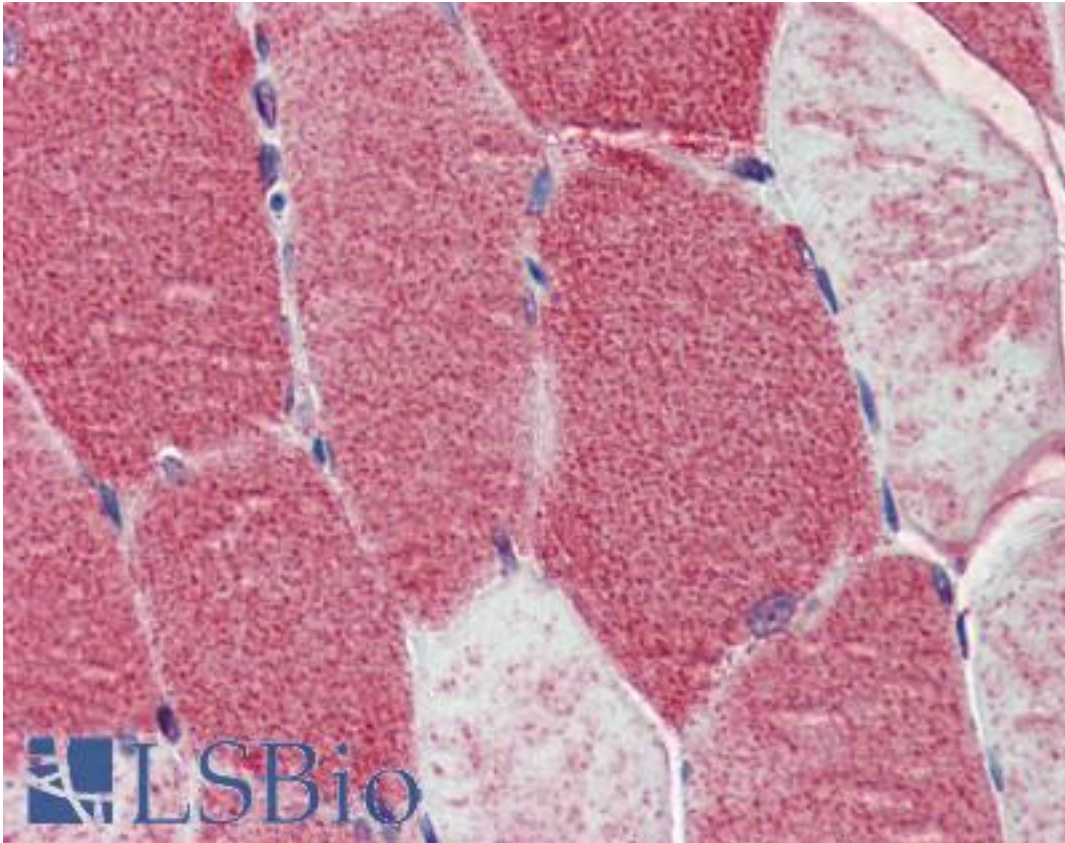


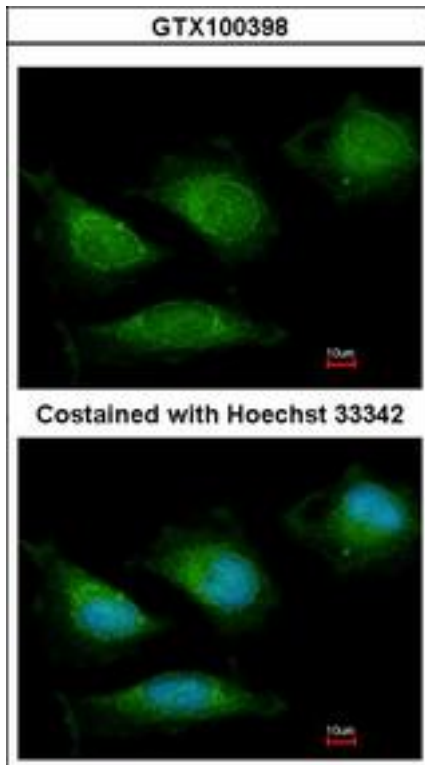
POLG Rabbit anti-Human Polyclonal Antibody - LS-B4085 - LSBio	
CatalogID:	LS-B4085
Validation:	This antibody replaces catalog number LS-C109310. It has been validated for use in the following assays: IHC-P.
Target:	polymerase (DNA directed), gamma (POLG)
Synonyms:	POLG Antibody, DNA polymerase gamma Antibody, MIRAS Antibody, MTDPS4A Antibody, PEO Antibody, POLG1 Antibody, POLGA Antibody, SANDO Antibody, PolG, catalytic subunit Antibody, PolG-alpha Antibody, SCAE Antibody, DNA polymerase subunit gamma-1 Antibody, MTDPS4B Antibody
Host	POLG antibody was produced in Rabbit
Clonality:	Polyclonal
Immunogen Species:	POLG antibody was raised against Human
Immunogen:	POLG antibody was raised against recombinant protein fragment containing a sequence corresponding to a region within amino acids 829 and 1201 of DNA polymerase gamma.
Specificity:	Human DNA polymerase gamma. Predicted cross-reactivity based on amino acid sequence homology: mouse (91%), rat (91%).
Reactivity:	Human
Purification:	Immunoaffinity purified
Presentation:	PBS, pH 7, 1% BSA, 20% Glycerol, 0.01% Thimerosal
Recommended Storage:	Aliquot and store at -20°C. Minimize freezing and thawing.
Uses:	IHC - Paraffin (10 µg/ml), ICC (1:100 - 1:200), Immunofluorescence (1:100 - 1:200), Western blot (1:1000 - 1:10000) (Optimal dilution to be determined by the researcher)
Size:	50 µl
Concentration:	0.7 mg/ml

Immunohistochemistry Image:



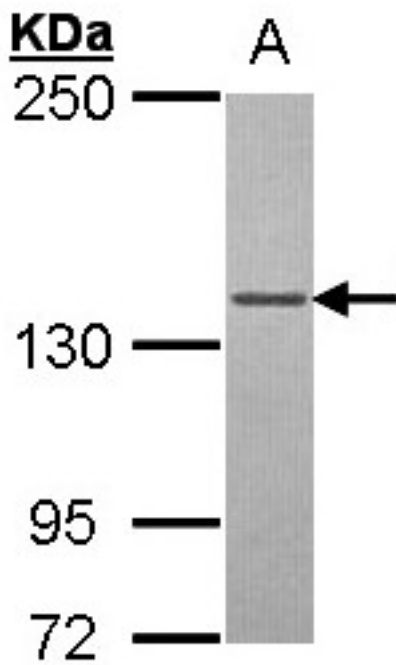
Anti-POLG antibody IHC of human skeletal muscle. Immunohistochemistry of formalin-fixed, paraffin-embedded tissue after heat-induced antigen retrieval. Antibody LS-B4085 concentration 10 ug/ml.

Immunofluorescence Image:



Immunofluorescence of methanol-fixed HeLa, using DNA polymerase gamma antibody at 1:200 dilution.

Western Blot Image:



Sample (30 ug of whole cell lysate). A: 293T. 5% SDS PAGE. POLG antibody diluted at 1:5000.

Requested From:

Japan

Laboratory Reagent For In Vitro Research Use Only

Not for resale without prior written consent from LifeSpan BioSciences, Inc.

Created on 9/23/2014

© 2014 LifeSpan BioSciences