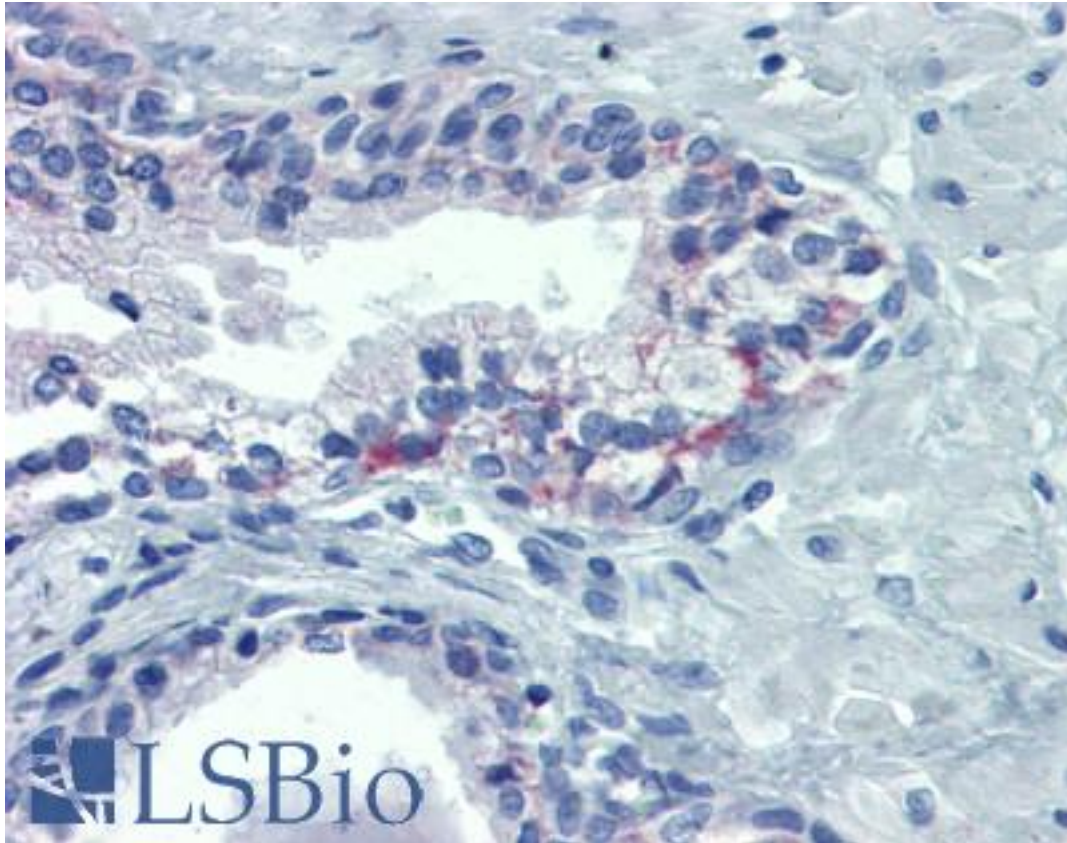


OR51E1 Rabbit anti-Human Polyclonal Antibody - LS-B4084 - LSBio

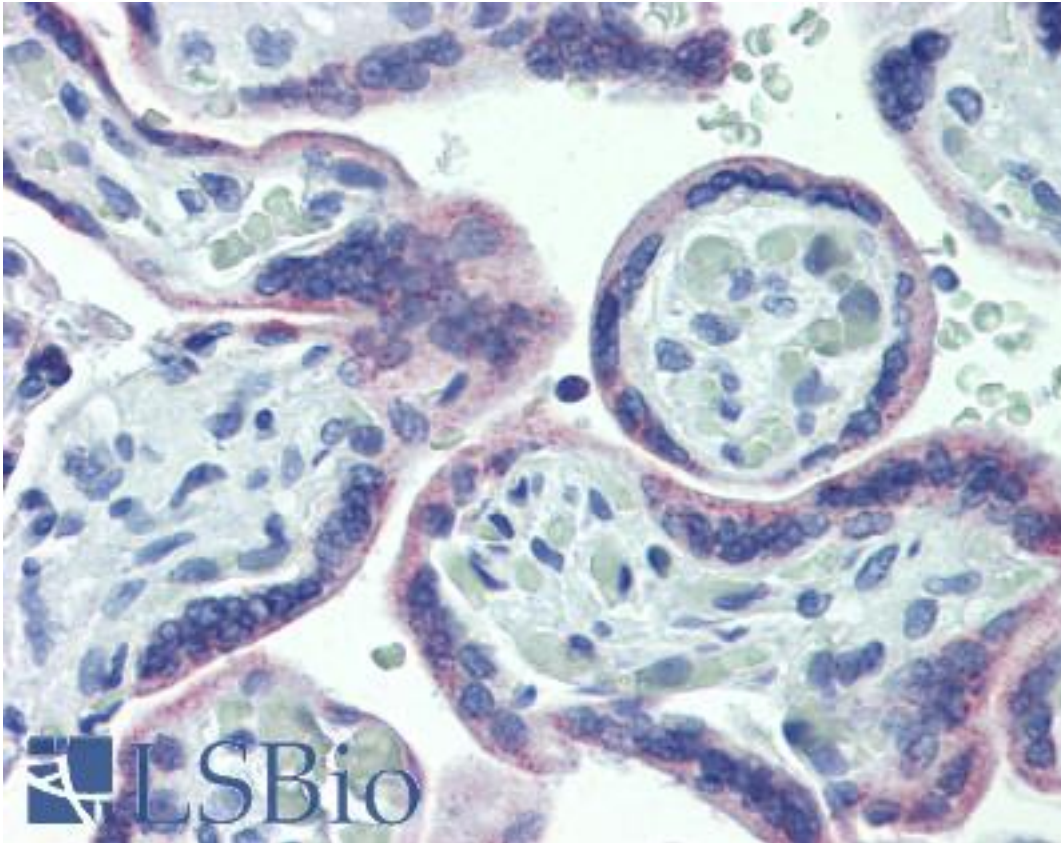
CatalogID:	LS-B4084
Validation:	This antibody replaces catalog number LS-C109307. It has been validated for use in the following assays: IHC-P.
Target:	olfactory receptor, family 51, subfamily E, member 1 (OR51E1)
Synonyms:	OR51E1 Antibody, D-GPCR Antibody, Olfactory receptor OR11-15 Antibody, OR51E1P Antibody, OR52A3P Antibody, PSGR2 Antibody, Olfactory receptor 51E1 Antibody, Olfactory receptor 52A3 Antibody, POGR Antibody, G-protein coupled receptor 164 Antibody, GPR136 Antibody, GPR164 Antibody
Family / Subfamily:	GPCR / Orphan-U
Host	OR51E1 antibody was produced in Rabbit
Clonality:	Polyclonal
Immunogen Species:	OR51E1 antibody was raised against Human
Antigen Type:	Synthetic peptide
Immunogen:	OR51E1 antibody was raised against synthetic peptide containing a sequence corresponding to a region within amino acids 79 and 141 of Human GPR 164.
Specificity:	Human GPR164.
Reactivity:	Human
Purification:	Immunoaffinity purified
Presentation:	PBS, pH 7, 50% Glycerol, 0.01% Thimerosal
Recommended Storage:	Aliquot and store at -20°C. Minimize freezing and thawing.
Uses:	IHC - Paraffin (20 µg/ml), Western blot (1:500 - 1:3000) (Optimal dilution to be determined by the researcher)
Size:	50 µl
Concentration:	1 mg/ml

Immunohistochemistry Image:



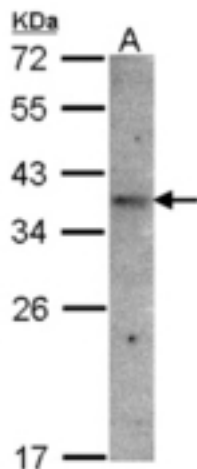
Anti-OR51E1 antibody IHC of human prostate. Immunohistochemistry of formalin-fixed, paraffin-embedded tissue after heat-induced antigen retrieval. Antibody LS-B4084 concentration 20 ug/ml.

Immunohistochemistry Image:



Anti-OR51E1 antibody IHC of human placenta. Immunohistochemistry of formalin-fixed, paraffin-embedded tissue after heat-induced antigen retrieval. Antibody LS-B4084 concentration 20 ug/ml.

Western Blot Image:



Sample(30 g of whole cell lysate). A: Raji. 12% SDS PAGE. OR51E1 antibody diluted at 1:1500.

Requested From:

Japan

Laboratory Reagent For In Vitro Research Use Only

Not for resale without prior written consent from LifeSpan BioSciences, Inc.

Created on 9/23/2014

© 2014 LifeSpan BioSciences