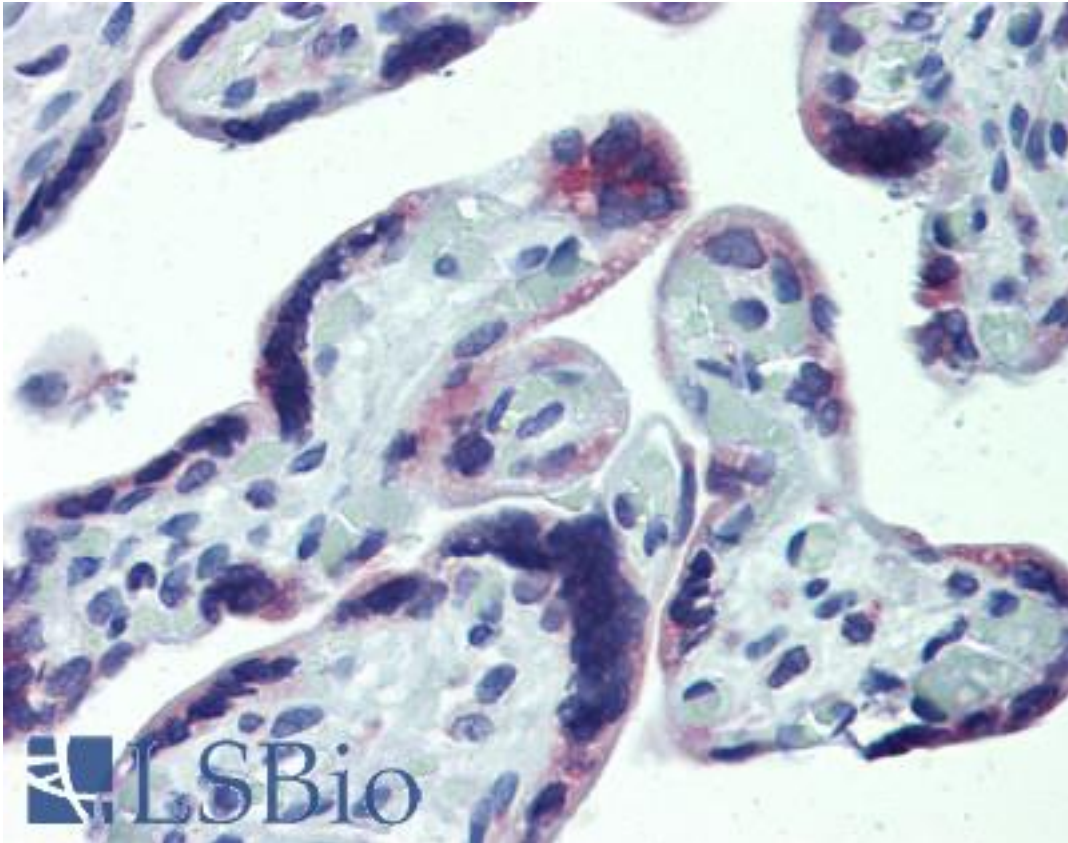


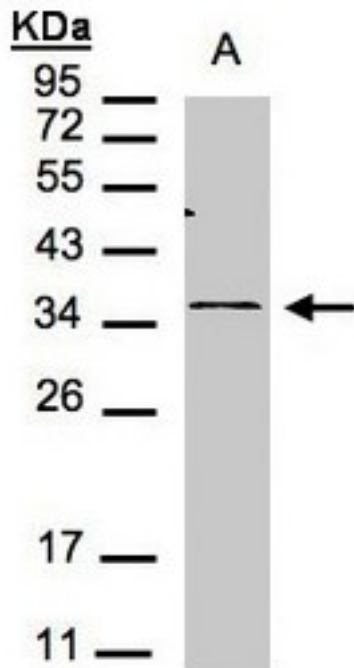
CXCR6 Rabbit anti-Human Polyclonal Antibody - LS-B4083 - LSBio	
CatalogID:	LS-B4083
Validation:	This antibody replaces catalog number LS-C109305. It has been validated for use in the following assays: IHC-P.
Target:	chemokine (C-X-C motif) receptor 6 (CXCR6)
Synonyms:	CXCR6 Antibody, CD186 antigen Antibody, CXCR-6 Antibody, STRL33 Antibody, TYMSTR Antibody, BONZO Antibody, CD186 Antibody, CDw186 Antibody, CXCR6 Antibody
Family / Subfamily:	GPCR / Chemokine
Host	CXCR6 antibody was produced in Rabbit
Clonality:	Polyclonal
Immunogen Species:	CXCR6 antibody was raised against Human
Antigen Type:	Synthetic peptide
Immunogen:	CXCR6 antibody was raised against synthetic peptide containing a sequence corresponding to a region within amino acids 82 and 142 of Human Bonzo.
Specificity:	Human Bonzo.
Reactivity:	Human
Purification:	Immunoaffinity purified
Presentation:	0.1 M Tris-glycine, pH 7, 10% Glycerol, 0.01% Thimerosal
Recommended Storage:	Aliquot and store at -20°C. Minimize freezing and thawing.
Uses:	IHC - Paraffin (20 µg/ml), Western blot (1:500 - 1:3000) (Optimal dilution to be determined by the researcher)
Size:	100 µl
Concentration:	0.71 mg/ml

Immunohistochemistry Image:



Anti-CXCR6 antibody IHC of human placenta. Immunohistochemistry of formalin-fixed, paraffin-embedded tissue after heat-induced antigen retrieval. Antibody LS-B4083 concentration 20 ug/ml.

Western Blot Image:



Sample(30 g of whole cell lysate). A:293T. 12% SDS PAGE. CXCR6 antibody diluted at 1:1000

Requested From:

Japan

Laboratory Reagent For In Vitro Research Use Only

Not for resale without prior written consent from LifeSpan BioSciences, Inc.

Created on 9/23/2014

© 2014 LifeSpan BioSciences