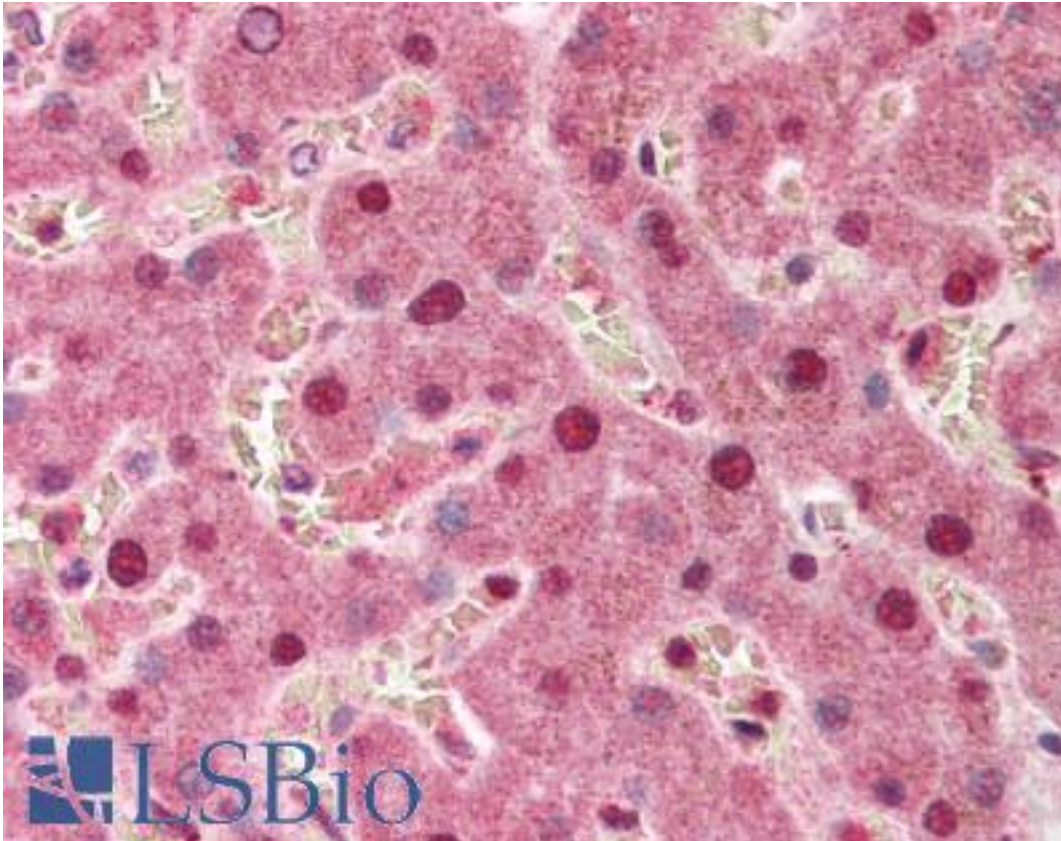


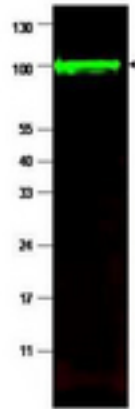
PPP1R13L / RAI / IASPP Rabbit anti-Human Polyclonal (aa780-797) Antibody - LS-B408 - LSBio	
CatalogID:	LS-B408
Validation:	This antibody replaces catalog number LS-C19094. It has been validated for use in the following assays: IHC.
Target:	protein phosphatase 1, regulatory subunit 13 like (PPP1R13L)
Synonyms:	PPP1R13L Antibody, IASPP Antibody, Inhibitor of ASPP protein Antibody, NFkB-interacting protein 1 Antibody, NKIP1 Antibody, RAI4 Antibody, RAI Antibody, Retinoic acid induced 4 Antibody, NFkB interacting protein 1 Antibody, PPP1R13BL Antibody, Protein iASPP Antibody, RelA-associated inhibitor Antibody, PPP1R13B-like protein Antibody
Host	PPP1R13L antibody was produced in Rabbit
Clonality:	Polyclonal
Immunogen Species:	PPP1R13L / RAI / IASPP antibody was raised against Human
Antigen Type:	Synthetic peptide
Immunogen:	PPP1R13L / RAI / IASPP antibody was raised against synthetic peptide from human PPP1R13L / IASPP.
Specificity:	Amino acids 780-797 of human iASPP (isoform 1) protein.
Epitope:	aa780-797
Reactivity:	Human
Purification:	Immunoaffinity purified
Presentation:	0.02 M potassium phosphate, 0.15 M sodium chloride, pH 7.2, 0.01% sodium azide.
Recommended Storage:	Store vial at -20 C prior to opening. Dilute only prior to immediate use. For extended storage aliquot contents and freeze at -20 C or below. Avoid cycles of freezing and thawing.
Usage Summary:	Immunohistochemistry: LS-B408 was validated for use in immunohistochemistry on a panel of 21 formalin-fixed, paraffin-embedded (FFPE) human tissues after heat induced antigen retrieval in pH 6.0 citrate buffer. After incubation with the primary antibody, slides were incubated with biotinylated secondary antibody, followed by alkaline phosphatase-streptavidin and chromogen. The stained slides were evaluated by a pathologist to confirm staining specificity. The optimal working concentration for LS-B408 was determined to be 2.5 ug/ml.
Uses:	IHC - Paraffin (2.5 ug/ml), Immunofluorescence, Western blot (1:1000 - 1:5000), ELISA (1:40000 - 1:160000) (Optimal dilution to be determined by the researcher)
Size:	50 ug
Concentration:	1 mg/ml

Immunohistochemistry Image:



Anti-PPP1R13L / IASPP antibody IHC of human liver. Immunohistochemistry of formalin-fixed, paraffin-embedded tissue after heat-induced antigen retrieval. Antibody LS-B408 concentration 5 ug/ml.

Western Blot Image:



Anti-iASPP Antibody - Western Blot. Western blot of affinity purified anti-iASPP antibody shows detection of a band at ~100 kD (arrowhead) corresponding to isoform 1 of iASPP in MCF7 whole cell lysates. Preincubation with immunizing peptide blocks specific band staining (data not shown). Approximately 35 ug of lysate was separated by 4-20% Tris Glycine SDS-PAGE. After blocking, the membrane was probed with the primary antibody diluted to 1:1500 in 5% BLOTTO/PBS overnight at 4C. The membrane was washed and reacted with a 1:10000 dilution of IRDye800 conjugated Gt-a-Rabbit IgG [H&L] (for 45 min at room temperature (800 nm channel, green). Molecular weight estimation was made by comparison to prestained MW markers. IRDye800 fluorescence image was captured using the Odyssey Infrared Imaging System developed by LI-COR. IRDye is a trademark of LI-COR, Inc. Other detection systems will yield similar results.

Requested From:

Japan

Laboratory Reagent For In Vitro Research Use Only

Not for resale without prior written consent from LifeSpan BioSciences, Inc.

Created on 9/23/2014

© 2014 LifeSpan BioSciences