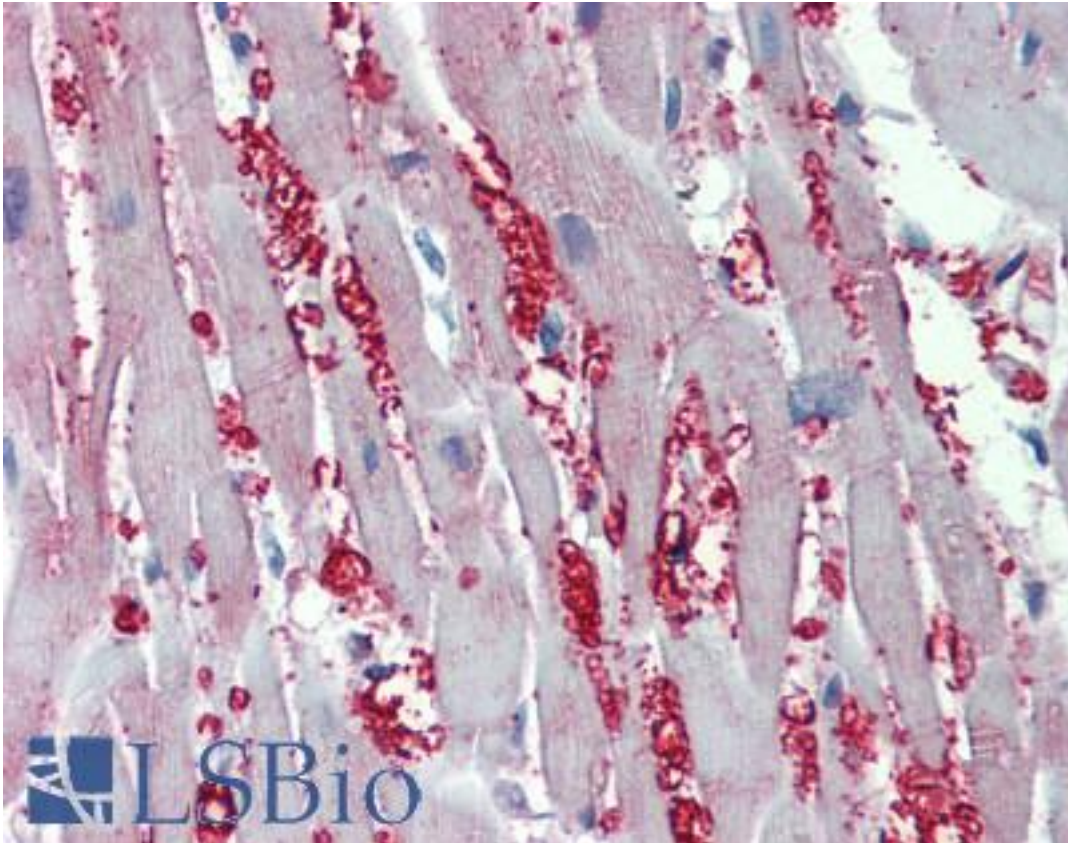


**ADRA1A Rabbit anti-Human Polyclonal Antibody - LS-B4077 - LSBio**

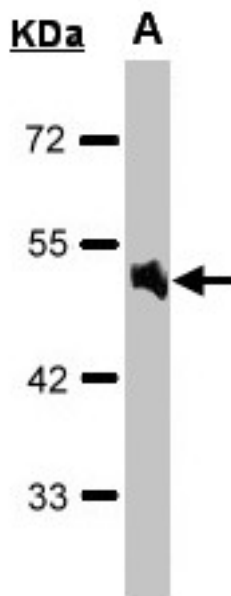
|                             |   |
|-----------------------------|---|
| <b>CatalogID:</b>           | LS-B4077  |
| <b>Validation:</b>          | This antibody replaces catalog number LS-C109295. It has been validated for use in the following assays: IHC-P.   |
| <b>Target:</b>              | adrenoceptor alpha 1A (ADRA1A)  |
| <b>Synonyms:</b>            | ADRA1A Antibody, ADRA1L1 Antibody, Adrenergic alpha 1c receptor Antibody, Alpha 1c adrenoceptor Antibody, Alpha-adrenergic receptor 1c Antibody, ADRA1C Antibody, Adrenoceptor alpha 1A Antibody, Alpha-1A adrenoceptor Antibody, Alpha-1A adrenoreceptor Antibody, Alpha-1A adrenergic receptor Antibody, Alpha-1C adrenergic receptor Antibody, ALPHA1AAR Antibody, Alpha1C-AR Antibody |
| <b>Family / Subfamily:</b>  | GPCR / Adrenergic   |
| <b>Host</b>                 | ADRA1A antibody was produced in Rabbit  |
| <b>Clonality:</b>           | Polyclonal  |
| <b>Immunogen Species:</b>   | ADRA1A antibody was raised against Human  |
| <b>Antigen Type:</b>        | Synthetic peptide   |
| <b>Immunogen:</b>           | ADRA1A antibody was raised against synthetic peptide containing a sequence corresponding to a region within amino acids 206 and 270 of Human Alpha-1A adrenergic receptor.  |
| <b>Specificity:</b>         | Human Adrenergic receptor alpha 1a.   |
| <b>Reactivity:</b>          | Human, Monkey, Mouse, Rat, Bovine, Rabbit   |
| <b>Purification:</b>        | Immunoaffinity purified   |
| <b>Presentation:</b>        | PBS, pH 7, 1% BSA, 20% Glycerol, 0.01% Thimerosal   |
| <b>Recommended Storage:</b> | Store at -20°C or lower. Aliquot to avoid repeated freezing and thawing.  |
| <b>Usage Summary:</b>       | The antibody is predicted to cross-react with the following species based on their respective sequence homologies: mouse (100%), Rat (100%), Rabbit (100%), cow (100%), Monkey (100%). Cross-reactivity has not been experimentally confirmed at this time.   |
| <b>Uses:</b>                | IHC - Paraffin (10 µg/ml), Western blot (1:500 - 1:3000) (Optimal dilution to be determined by the researcher)  |
| <b>Size:</b>                | 50 µl   |
| <b>Concentration:</b>       | 1 mg/ml   |

**Immunohistochemistry Image:**



Anti-ADRA1A antibody IHC of human heart. Immunohistochemistry of formalin-fixed, paraffin-embedded tissue after heat-induced antigen retrieval. Antibody LS-B4077 concentration 10 ug/ml.

**Western Blot Image:**



Sample(30 g of whole cell lysate). A: Raji. 10% SDS PAGE. ADRA1A antibody diluted at 1:1000.

**Requested From:**

Japan

Laboratory Reagent For In Vitro Research Use Only

Not for resale without prior written consent from LifeSpan BioSciences, Inc.

Created on 9/23/2014

© 2014 LifeSpan BioSciences