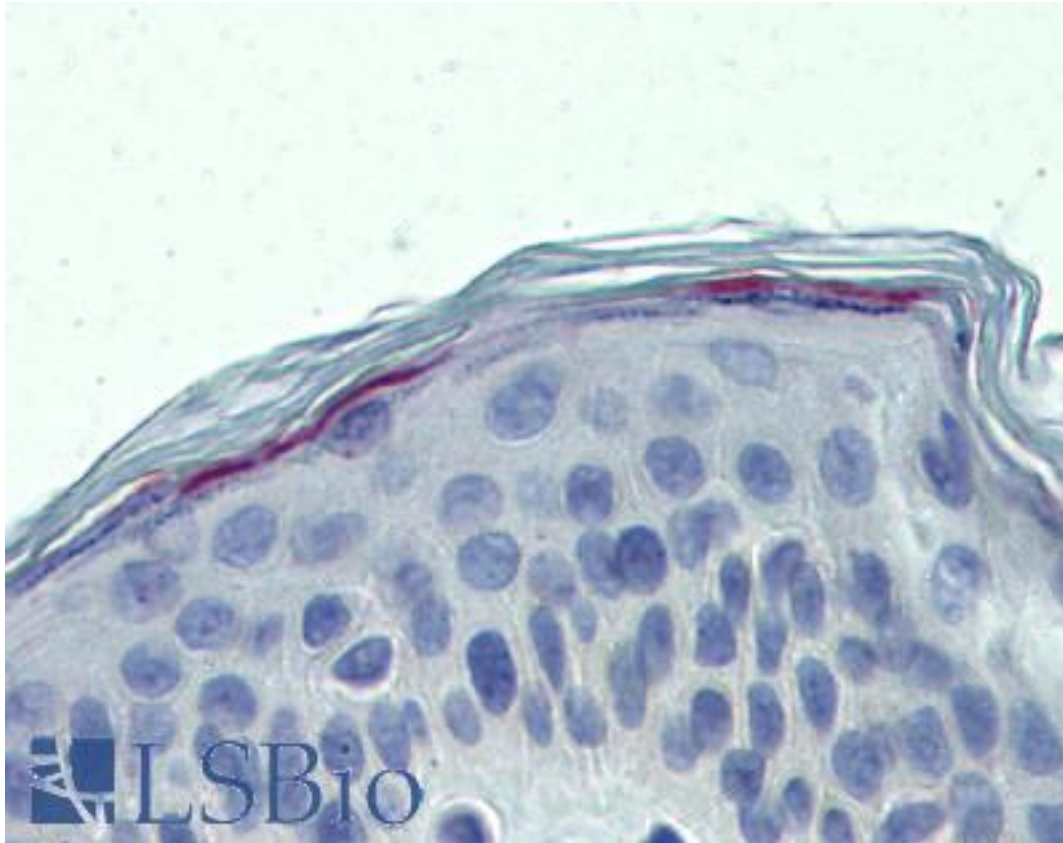


CSA / ERCC8 Rabbit anti-Human Polyclonal Antibody - LS-B4076 - LSBio

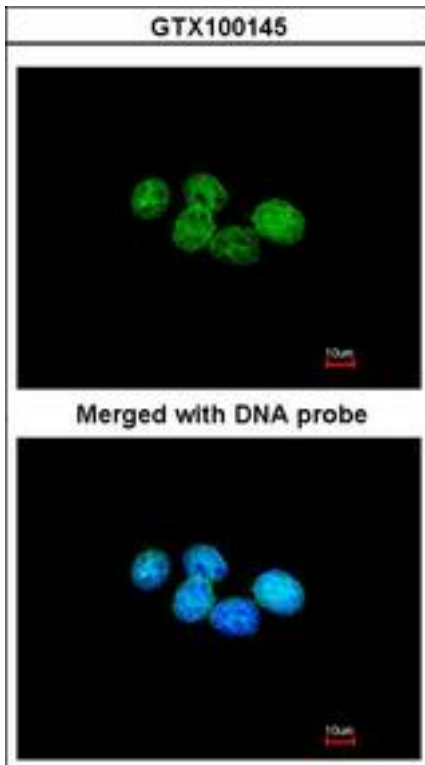
CatalogID:	LS-B4076
Validation:	This antibody replaces catalog number LS-C109291. It has been validated for use in the following assays: IHC-P.
Target:	excision repair cross-complementing rodent repair deficiency, complementation group 8 (ERCC8)
Synonyms:	ERCC8 Antibody, CKN1 Antibody, UVSS2 Antibody, CSA Antibody
Host	ERCC8 antibody was produced in Rabbit
Clonality:	Polyclonal
Immunogen Species:	CSA / ERCC8 antibody was raised against Human
Immunogen:	CSA / ERCC8 antibody was raised against recombinant protein fragment containing a sequence corresponding to a region within amino acids 106 and 300 of CSA.
Specificity:	Human ERCC8.
Reactivity:	Human, Mouse, Rat, Bovine
Purification:	Immunoaffinity purified
Presentation:	PBS, pH 7, 1% BSA, 20% Glycerol, 0.01% Thimerosal
Recommended Storage:	Aliquot and store at -20°C. Minimize freezing and thawing.
Usage Summary:	Cross reactivity with mouse has been confirmed in WB only. The suitability of the antibody for use in IHC with mouse samples has not been evaluated at this time. Cross-reactivity with rat and cow has not been experimentally confirmed. The antibody is predicted to cross-react with rat and cow based on sequence homologies of 96% and 95% respectively.
Uses:	IHC - Paraffin (10 µg/ml), ICC, Immunofluorescence (1:100 - 1:200), Western blot (1:500 - 1:3000) (Optimal dilution to be determined by the researcher)
Size:	50 µl

Immunohistochemistry Image:



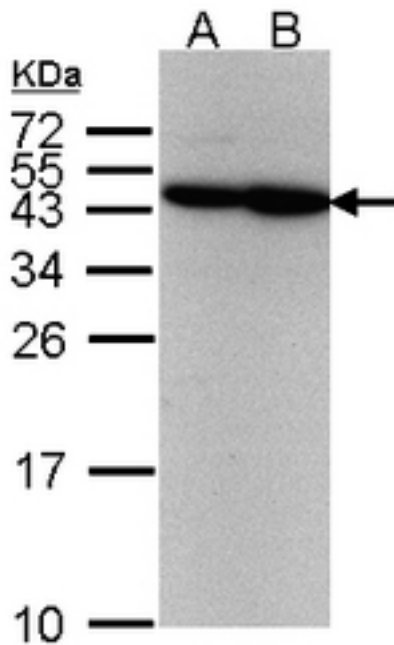
Anti-ERCC8 antibody IHC of human skin. Immunohistochemistry of formalin-fixed, paraffin-embedded tissue after heat-induced antigen retrieval. Antibody LS-B4076 concentration 10 ug/ml.

Immunofluorescence Image:



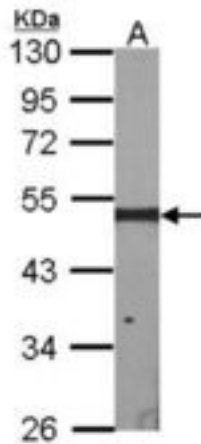
Immunofluorescence of paraformaldehyde-fixed A431, using ERCC8(CSA) antibody at 1:200 dilution.

Western Blot Image:



Sample(30 g of whole cell lysate). A:293T. B: A431. 12% SDS PAGE. ERCC8 antibody diluted at 1:500.

Western Blot Image:



Sample (30 ug of whole cell lysate). A: NIH-3T3. 10% SDS PAGE. ERCC8 antibody diluted at 1:1000.

Requested From:

Japan

Laboratory Reagent For In Vitro Research Use Only

Not for resale without prior written consent from LifeSpan BioSciences, Inc.

Created on 9/23/2014

© 2014 LifeSpan BioSciences