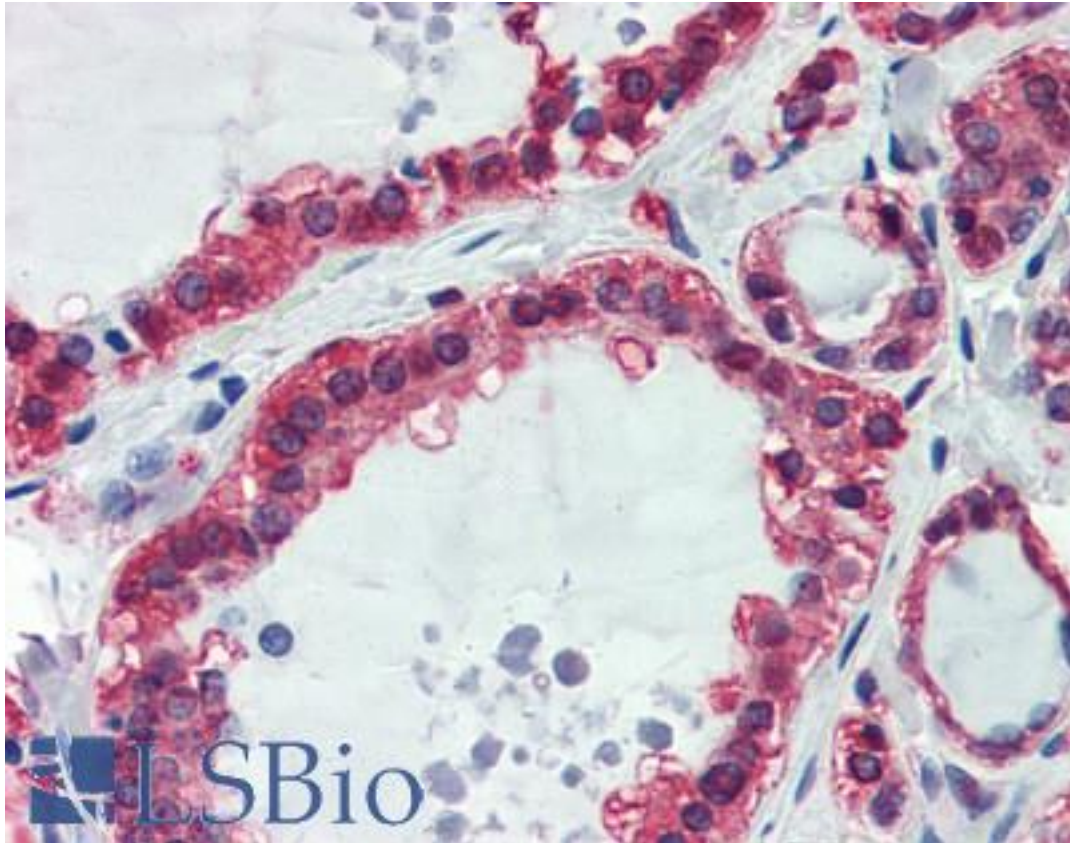


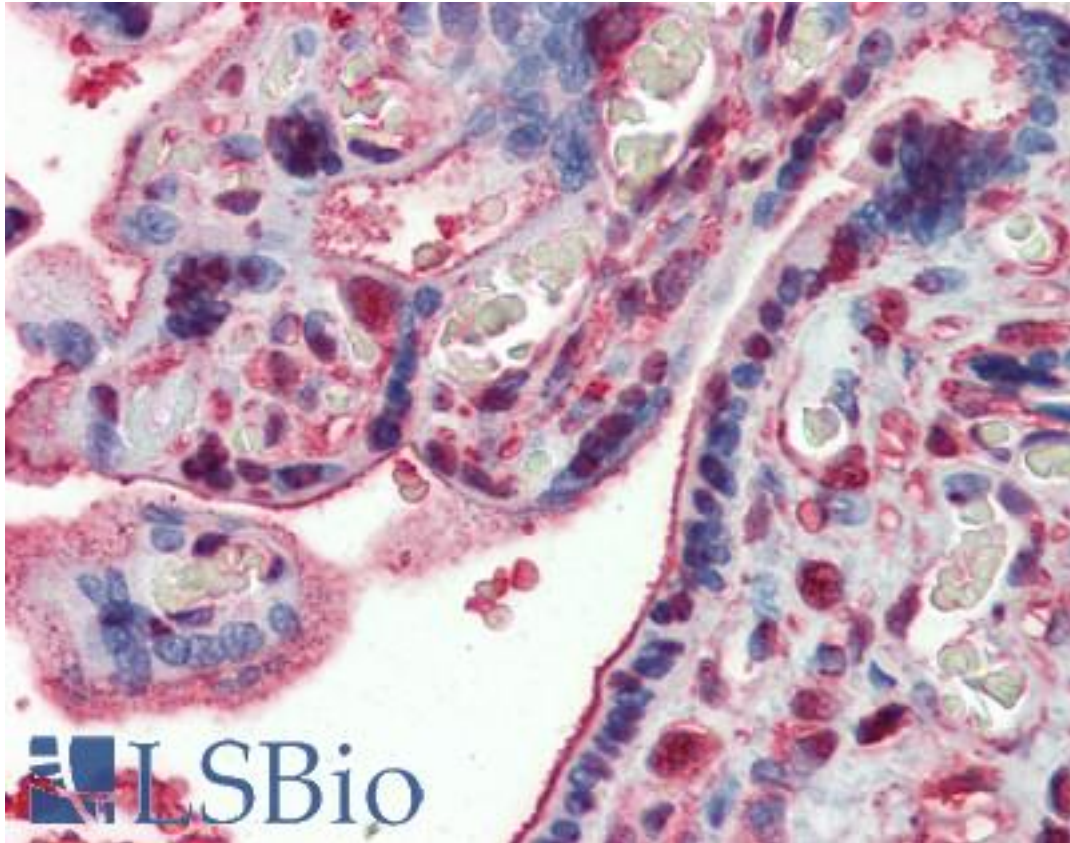
GAPDH Rabbit anti-Human Polyclonal Antibody - LS-B4075 - LSBio	
CatalogID:	LS-B4075
Validation:	This antibody replaces catalog number LS-C109289. It has been validated for use in the following assays: IHC-P.
Target:	glyceraldehyde-3-phosphate dehydrogenase (GAPDH)
Synonyms:	GAPDH Antibody, A1 40 kd subunit Antibody, Activator 1 40 kd subunit Antibody, G3PD Antibody, GAPD Antibody, G3pdh Antibody, Rfc40 Antibody, Rf-c 40 kd subunit Antibody
Host	GAPDH antibody was produced in Rabbit
Clonality:	Polyclonal
Immunogen Species:	GAPDH antibody was raised against Human
Immunogen:	GAPDH antibody was raised against recombinant protein fragment containing a sequence corresponding to a region within amino acids 9 and 323 of GAPDH.
Specificity:	Human GAPDH
Reactivity:	Human, Mouse, Rat, Drosophila
Purification:	Immunoaffinity purified
Presentation:	PBS, 20% glycerol (pH 7), 0.025% proclin
Recommended Storage:	Aliquot and store at -20°C. Minimize freezing and thawing.
Usage Summary:	Cross-reactivity with mouse and zebrafish has been confirmed in WB only. The antibody's suitability for use in IHC with mouse and zebrafish tissues has not been determined at this time. Cross-reactivity with rat, rabbit, cow, dog, and cat has not been experimentally confirmed at this time. The antibody is predicted to cross react with these species based on the following homology: Rat (94%), Rabbit (94%), cow (94%), Dog (95%), Cat (96%).
Uses:	IHC - Paraffin (10 µg/ml), ICC (1:100 - 1:200), Immunofluorescence (1:100 - 1:200), Western blot (1:5000 - 1:20000) (Optimal dilution to be determined by the researcher)
Size:	50 µl
Concentration:	1 mg/ml

Immunohistochemistry Image:



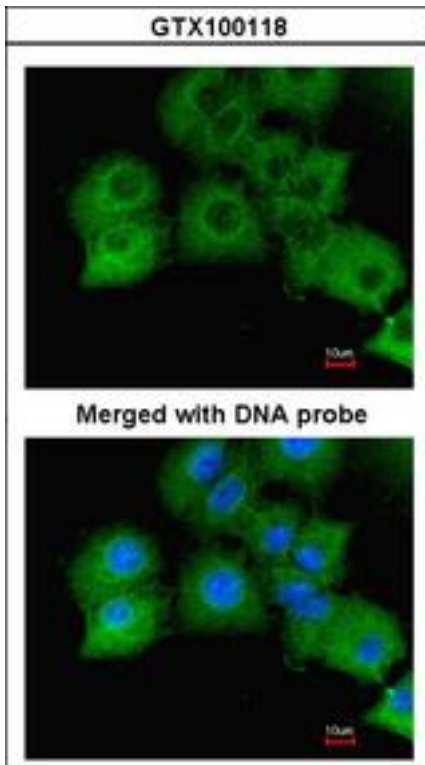
Anti-GAPDH antibody IHC of human thyroid. Immunohistochemistry of formalin-fixed, paraffin-embedded tissue after heat-induced antigen retrieval. Antibody LS-B4075 concentration 10 ug/ml.

Immunohistochemistry Image:



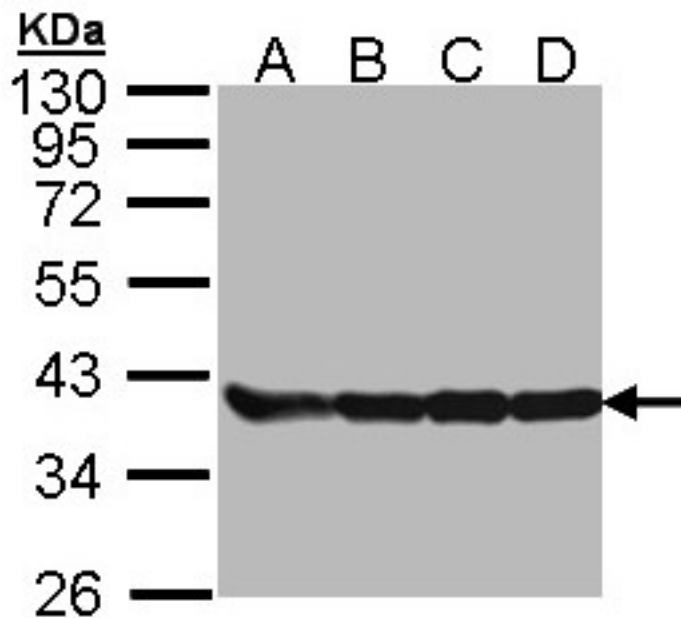
Anti-GAPDH antibody IHC of human placenta. Immunohistochemistry of formalin-fixed, paraffin-embedded tissue after heat-induced antigen retrieval. Antibody LS-B4075 concentration 10 ug/ml.

Immunofluorescence Image:



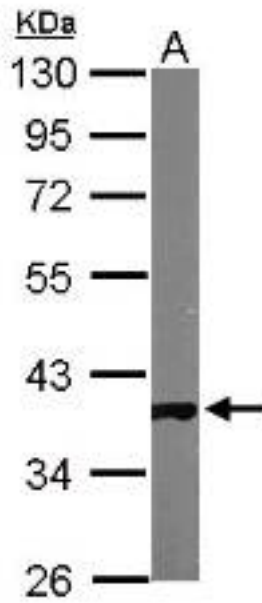
Immunofluorescence of paraformaldehyde-fixed A549, using GAPDH antibody at 1:200 dilution.

Western Blot Image:



Sample (30 ug of whole cell lysate). A: 293T. B: A431. C: H1299. D: Hela. 10% SDS PAGE. GAPDH antibody diluted at 1:5000.

Western Blot Image:



Sample (50 ug of whole cell lysate) A: Mouse Brain. 10% SDS PAGE. LS-B4075 diluted at 1:10000.

Requested From:

Japan

Laboratory Reagent For In Vitro Research Use Only

Not for resale without prior written consent from LifeSpan BioSciences, Inc.

Created on 9/23/2014

© 2014 LifeSpan BioSciences