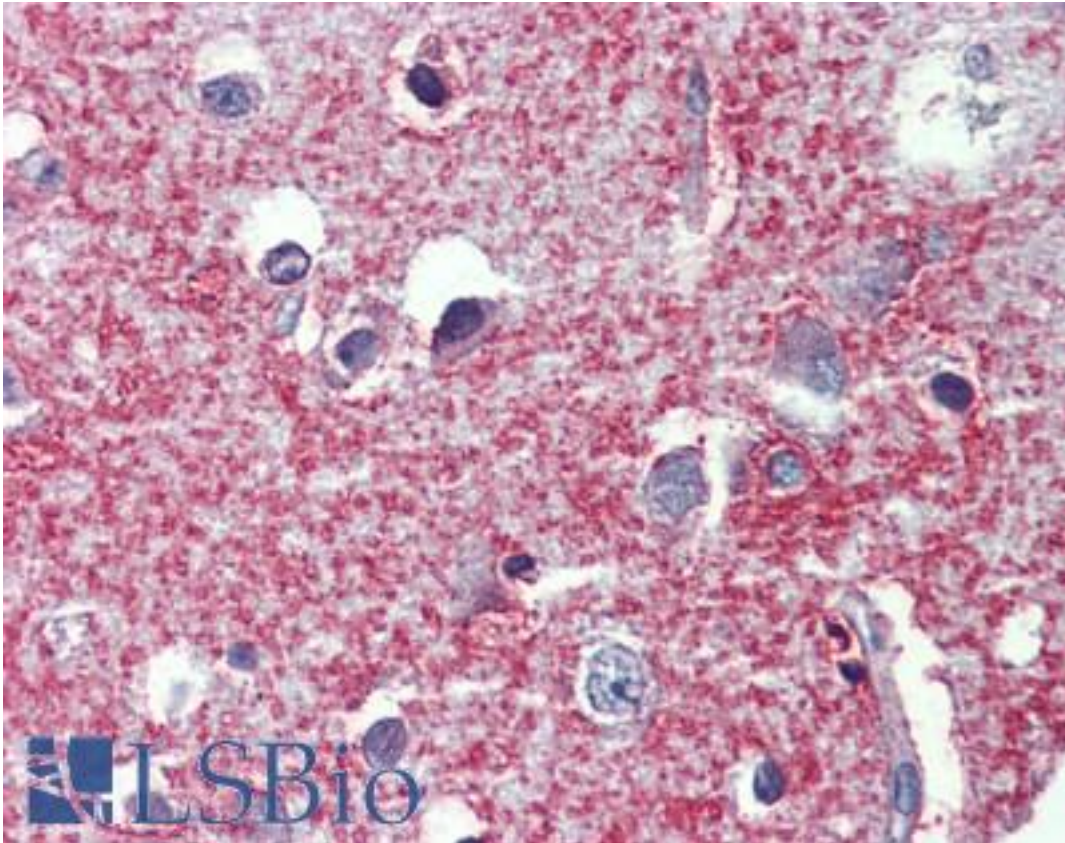


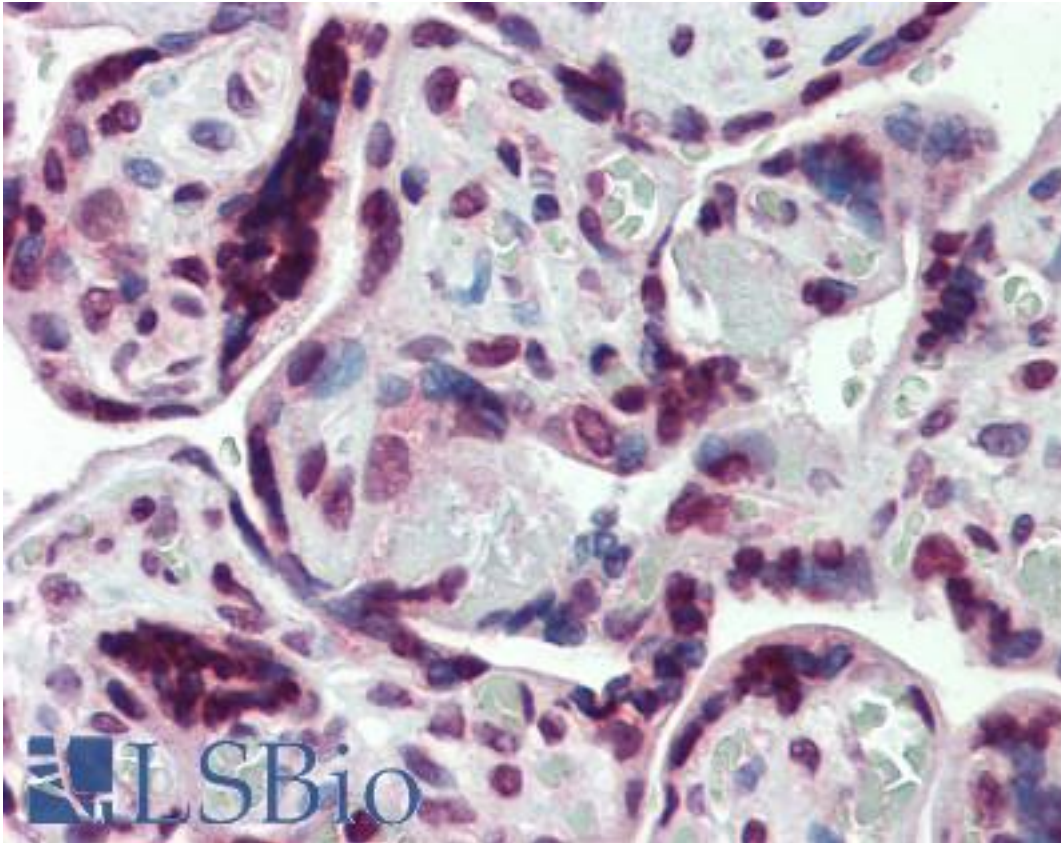
SHROOM2 Rabbit anti-Human Polyclonal Antibody - LS-B4070 - LSBio	
CatalogID:	LS-B4070
Validation:	This antibody replaces catalog number LS-C109282. It has been validated for use in the following assays: IHC-P.
Target:	shroom family member 2 (SHROOM2)
Synonyms:	SHROOM2 Antibody, Apical-like protein Antibody, HSAPXL Antibody, Protein APXL Antibody, Protein Shroom2 Antibody, APX homolog of Xenopus Antibody, APXL Antibody, Shroom family member 2 Antibody
Host	SHROOM2 antibody was produced in Rabbit
Clonality:	Polyclonal
Immunogen Species:	SHROOM2 antibody was raised against Human
Antigen Type:	Synthetic peptide
Immunogen:	SHROOM2 antibody was raised against synthetic peptide containing a sequence corresponding to a region within amino acids 1554 and 1616 of Human APXL.
Specificity:	Human APXL.
Reactivity:	Human
Purification:	Immunoaffinity purified
Presentation:	PBS, pH 7, 1% BSA, 20% Glycerol, 0.01% Thimerosal
Recommended Storage:	Aliquot and store at -20°C. Minimize freezing and thawing.
Uses:	IHC - Paraffin (10 µg/ml), Western blot (1:500 - 1:3000) (Optimal dilution to be determined by the researcher)
Size:	50 µl
Concentration:	1 mg/ml

Immunohistochemistry Image:



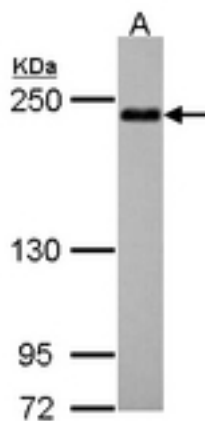
Anti-SHROOM2 antibody IHC of human brain, cortex. Immunohistochemistry of formalin-fixed, paraffin-embedded tissue after heat-induced antigen retrieval. Antibody LS-B4070 concentration 10 ug/ml.

Immunohistochemistry Image:



Anti-SHROOM2 antibody IHC of human placenta. Immunohistochemistry of formalin-fixed, paraffin-embedded tissue after heat-induced antigen retrieval. Antibody LS-B4070 concentration 10 ug/ml.

Western Blot Image:



Sample (30 ug of whole cell lysate). A: Hep G2. 5% SDS PAGE. SHROOM2 antibody diluted at 1:500.

Requested From:

Japan

Laboratory Reagent For In Vitro Research Use Only

Not for resale without prior written consent from LifeSpan BioSciences, Inc.

Created on 9/23/2014

© 2014 LifeSpan BioSciences