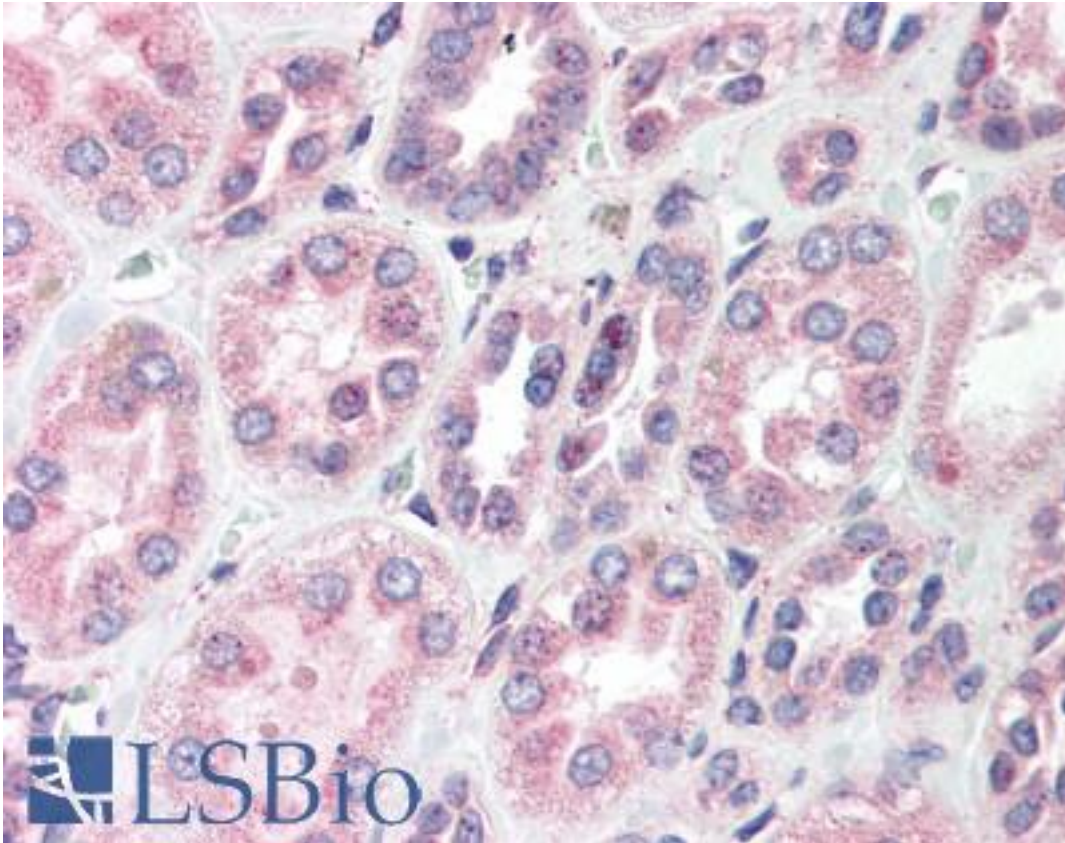


POLM / DNA Polymerase Mu Rabbit anti-Human Polyclonal (aa6-18) Antibody - LS-B406 - LSBio	
<b>CatalogID:</b>	LS-B406
<b>Validation:</b>	This antibody replaces catalog number LS-C19033. It has been validated for use in the following assays: IHC.
<b>Target:</b>	polymerase (DNA directed), mu (POLM)
<b>Synonyms:</b>	POLM Antibody, Polmu Antibody, Polymerase (DNA directed), mu Antibody, Pol iota Antibody, Pol Mu Antibody, Tdt-N Antibody, DNA polymerase mu Antibody, Polymerase (DNA-directed), mu Antibody, Terminal transferase Antibody
<b>Host</b>	POLM antibody was produced in Rabbit
<b>Clonality:</b>	Polyclonal
<b>Immunogen Species:</b>	POLM / DNA Polymerase Mu antibody was raised against Human
<b>Antigen Type:</b>	Synthetic peptide
<b>Immunogen:</b>	POLM / DNA Polymerase Mu antibody was raised against synthetic peptide from human POLM.
<b>Specificity:</b>	Aa 6-18 of Human POLM m (DNA polymerase mu). POLM m is a template-directed terminal deoxynucleotide transferase that shows a preferential expression in proliferating lymphoid cells.
<b>Epitope:</b>	aa6-18
<b>Reactivity:</b>	Human
<b>Purification:</b>	Immunoaffinity purified
<b>Presentation:</b>	0.02 M potassium phosphate, 0.15 M sodium chloride, pH 7.2, 0.01% sodium azide.
<b>Recommended Storage:</b>	+4°C or -20°C, Avoid repeated freezing and thawing.
<b>Usage Summary:</b>	Immunohistochemistry: LS-B406 was validated for use in immunohistochemistry on a panel of 21 formalin-fixed, paraffin-embedded (FFPE) human tissues after heat induced antigen retrieval in pH 6.0 citrate buffer. After incubation with the primary antibody, slides were incubated with biotinylated secondary antibody, followed by alkaline phosphatase-streptavidin and chromogen. The stained slides were evaluated by a pathologist to confirm staining specificity. The optimal working concentration for LS-B406 was determined to be 5 ug/ml.
<b>Uses:</b>	IHC - Paraffin (5 µg/ml), ELISA (Optimal dilution to be determined by the researcher)
<b>Size:</b>	50 µg

**Immunohistochemistry Image:**



Anti-POLM antibody IHC of human kidney. Immunohistochemistry of formalin-fixed, paraffin-embedded tissue after heat-induced antigen retrieval. Antibody LS-B406 concentration 5 ug/ml.

**Requested From:**

Japan

Laboratory Reagent For In Vitro Research Use Only

Not for resale without prior written consent from LifeSpan BioSciences, Inc.

Created on 9/23/2014

© 2014 LifeSpan BioSciences