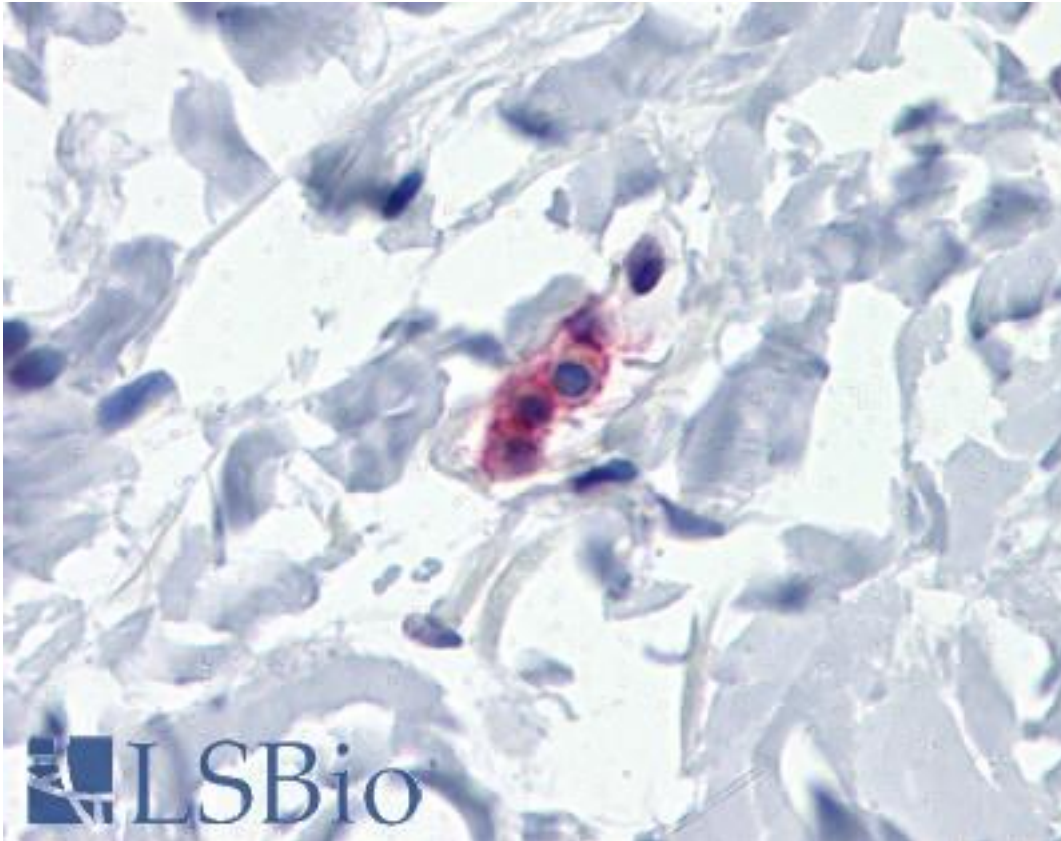


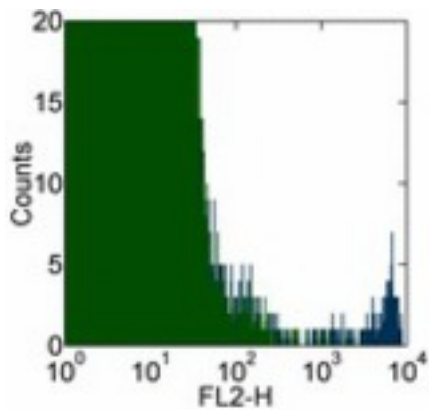
Fc Epsilon RI / FcERI Mouse anti-Human Monoclonal (AER-37 (CRA1)) Antibody - LS-B4054 - LSBio	
CatalogID:	LS-B4054
Validation:	This antibody replaces catalog number LS-C106643. It has been validated for use in the following assays: IHC-P.
Target:	Fc fragment of IgE, high affinity I, receptor for; alpha polypeptide (FCER1A)
Synonyms:	FCER1A Antibody, Alpha polypeptide Antibody, FCE1A Antibody, FcERI Antibody, Fc Epsilon RI Antibody, Fc epsilon RI alpha-chain Antibody, Fc-epsilon RI-alpha Antibody, IgE Fc receptor subunit alpha Antibody
Family / Subfamily:	Immunoglobulin / not assigned-Immunoglobulin
Host	FCER1A antibody was produced in Mouse
Clonality:	Monoclonal
Isotype:	IgG2b,k
Clone Name:	AER-37 (CRA1)
Immunogen Species:	Fc Epsilon RI / FcERI antibody was raised against Human
Immunogen:	Fc Epsilon RI / FcERI antibody was raised against human FCER1A
Reactivity:	Human
Purification:	Affinity purified
Presentation:	PBS, pH 7.2, 150 mM sodium chloride, 0.09% sodium azide
Recommended Storage:	Store at 4°C, avoid repeated freeze thaw cycles.
Usage Summary:	The AER-37 (CRA1) antibody has been tested by flow cytometric analysis of peripheral blood leukocytes. This can be used at less than or equal to 1 ug per test. A test is defined as the amount (ug) of antibody that will stain a cell sample in a final volume of 100 ul. Cell number should be determined empirically but can range from 10 ⁵ to 10 ⁸ cells/test. It is recommended that the antibody be carefully titrated for optimal performance in the assay of interest.
Uses:	IHC - Paraffin (20 µg/ml), Flow Cytometry (Optimal dilution to be determined by the researcher)
Size:	50 µg
Concentration:	0.5 mg/ml

Immunohistochemistry Image:



Anti-FCER1A antibody IHC of human mast cell in human small intestine. Immunohistochemistry of formalin-fixed, paraffin-embedded tissue after heat-induced antigen retrieval. Antibody LS-B4054 concentration 20 ug/ml.

Flow Cytometry Image:



Staining of human lysed whole blood with Purified Mouse IgG2b isotype control (green histogram) or Purified AER-37 (CRA1) (blue histogram) followed by Biotin Anti-Mouse IgG and Streptavidin-PE. Cells in the lymphocyte gate were used for analysis.

Requested From:

Japan

Laboratory Reagent For In Vitro Research Use Only

Not for resale without prior written consent from LifeSpan BioSciences, Inc.

Created on 9/23/2014

© 2014 LifeSpan BioSciences