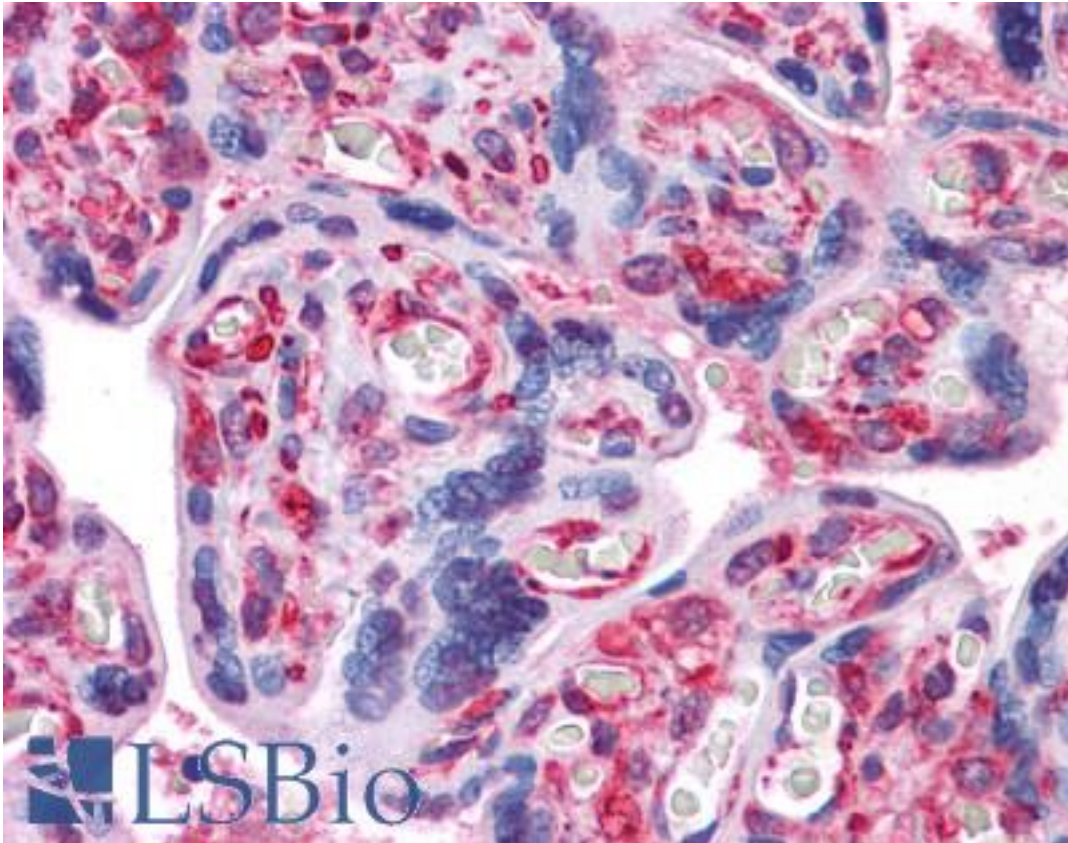


Alpha Tubulin Mouse anti-Human Monoclonal (DM1A) Antibody - LS-B4053 - LSBio

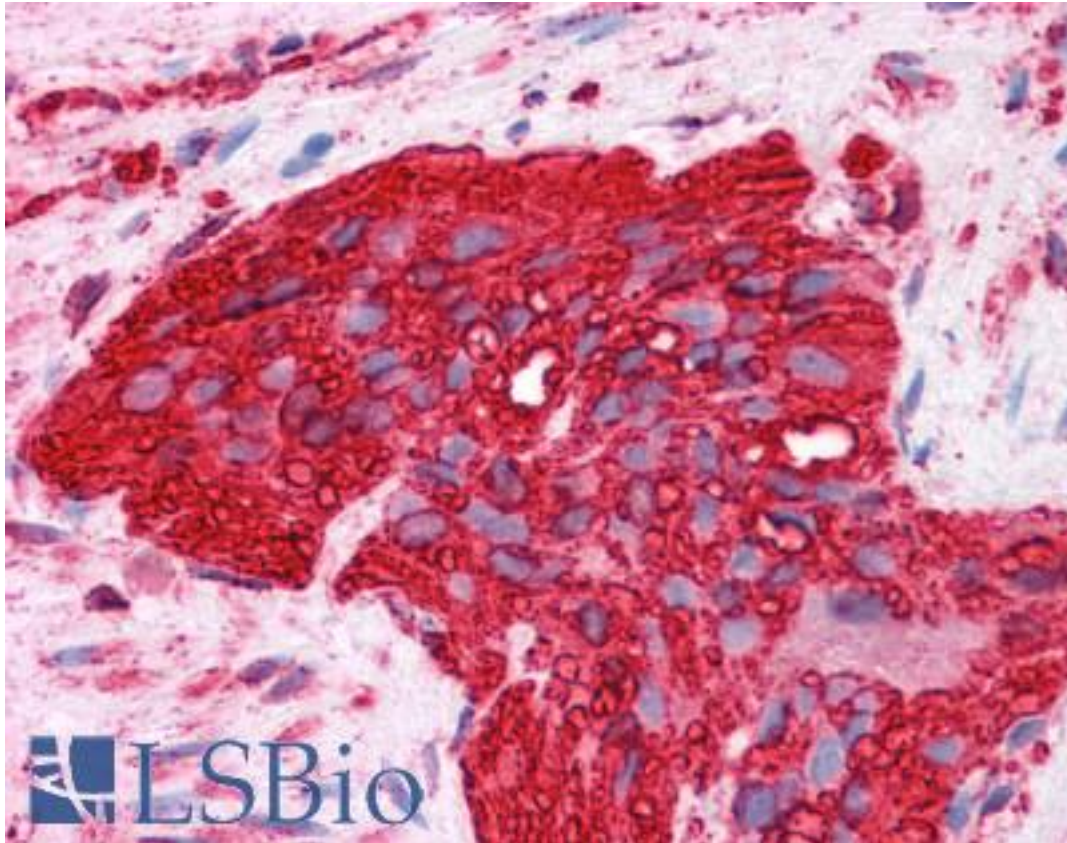
| | |
|-----------------------------|---|
| CatalogID: | LS-B4053 |
| Validation: | This antibody replaces catalog number LS-C106880. It has been validated for use in the following assays: IHC-P. |
| Target: | Tubulin Alpha |
| Host | Tubulin Alpha antibody was produced in Mouse |
| Clonality: | Monoclonal |
| Isotype: | IgG1,k |
| Clone Name: | DM1A |
| Immunogen Species: | Alpha Tubulin antibody was raised against Human |
| Immunogen: | Alpha Tubulin antibody was raised against human Tubulin Alpha |
| Reactivity: | Human, Monkey, Mouse, Rat, Bovine, Dog, Goat, Guinea pig, Hamster, Pig, Yeast, Amphibian, Kangaroo, Sea urchin |
| Purification: | Affinity purified |
| Presentation: | Aqueous buffer, 0.09% sodium azide, contains stabilizer if necessary |
| Recommended Storage: | Store at 4°C, avoid repeated freeze thaw cycles. |
| Usage Summary: | This DM1A antibody has been tested by western blotting under reducing conditions (at 2 ug/ml) or by immunofluorescent staining of paraformaldehyde fixed and permeabilized cells. |
| Uses: | IHC - Paraffin (20 µg/ml), Western blot, Immunoprecipitation (Optimal dilution to be determined by the researcher) |
| Size: | 50 µg |
| Concentration: | 0.5 mg/ml |

Immunohistochemistry Image:



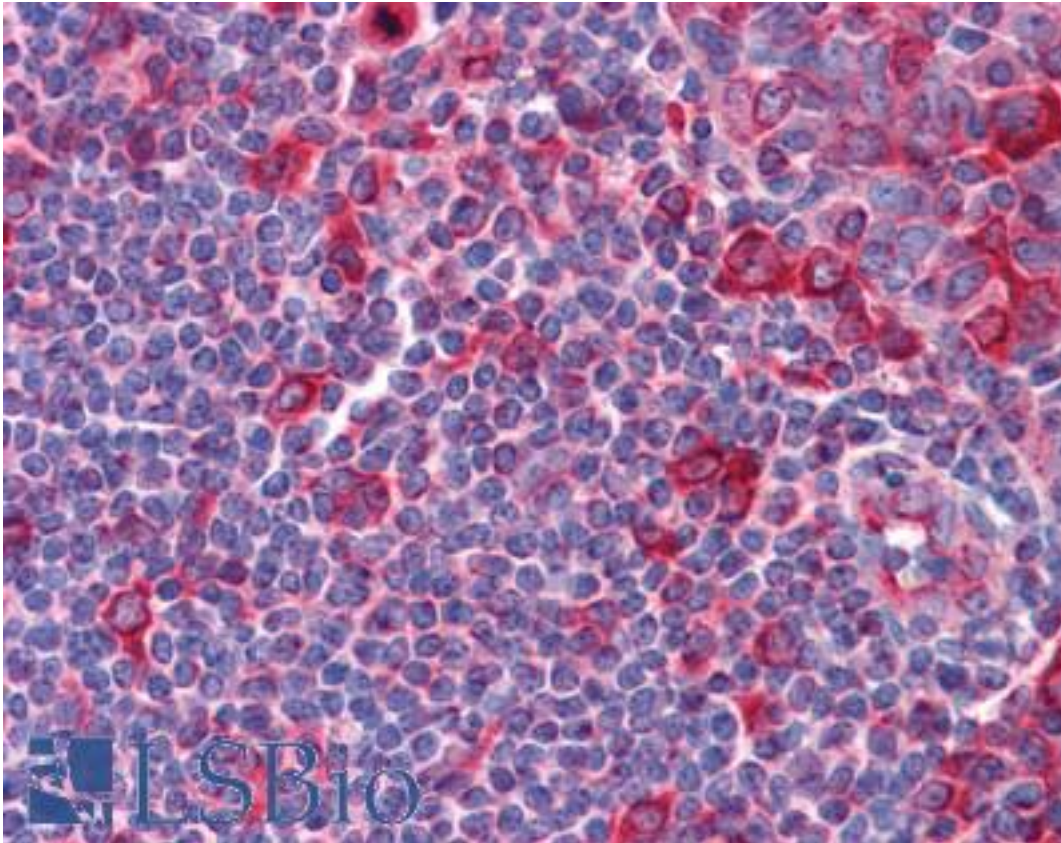
Anti-Alpha Tubulin antibody IHC of human placenta. Immunohistochemistry of formalin-fixed, paraffin-embedded tissue after heat-induced antigen retrieval. Antibody LS-B4053 concentration 20 ug/ml.

Immunohistochemistry Image:



Anti-Alpha Tubulin antibody IHC of human colon, myenteric plexus. Immunohistochemistry of formalin-fixed, paraffin-embedded tissue after heat-induced antigen retrieval. Antibody LS-B4053 concentration 20 ug/ml.

Immunohistochemistry Image:



Anti-Alpha Tubulin antibody IHC of human tonsil. Immunohistochemistry of formalin-fixed, paraffin-embedded tissue after heat-induced antigen retrieval. Antibody LS-B4053 concentration 20 ug/ml.

Requested From:

Japan

Laboratory Reagent For In Vitro Research Use Only

Not for resale without prior written consent from LifeSpan BioSciences, Inc.

Created on 9/23/2014

© 2014 LifeSpan BioSciences