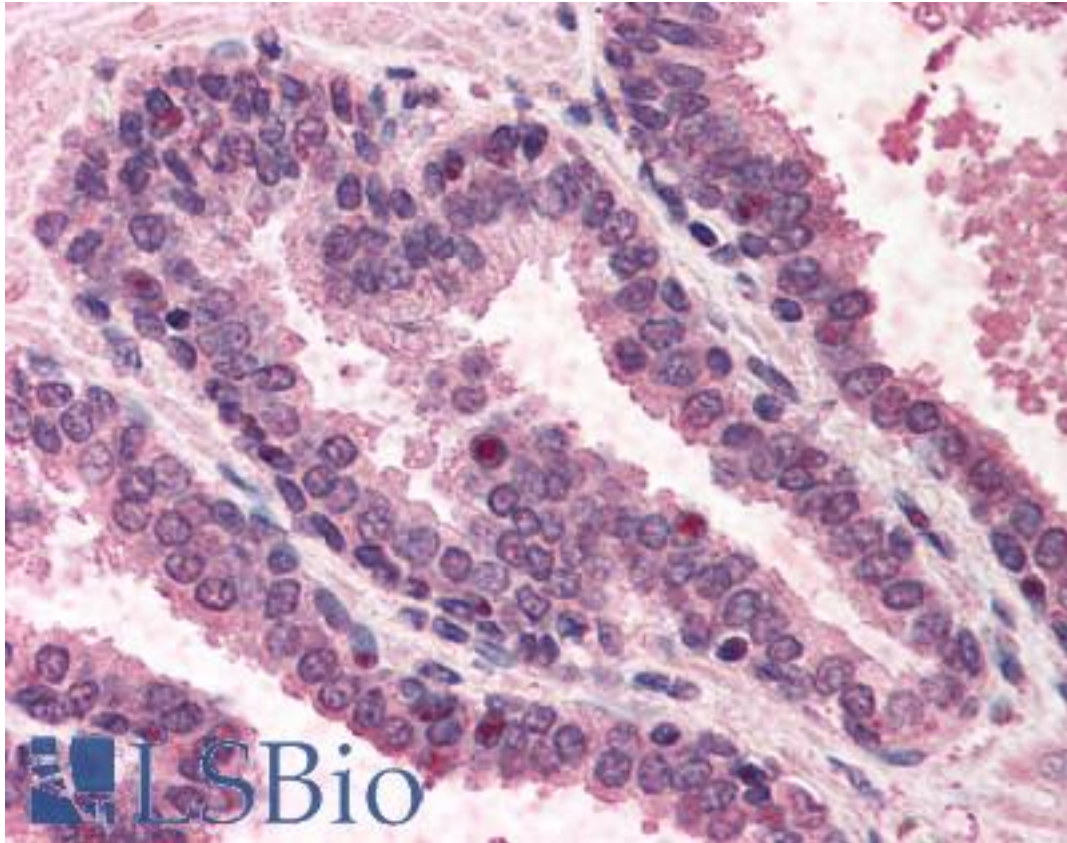


POLK Goat anti-Human Polyclonal (aa817-830) Antibody - LS-B405 - LSBio	
CatalogID:	LS-B405
Validation:	This antibody replaces catalog number LS-C19106. It has been validated for use in the following assays: IHC.
Target:	polymerase (DNA directed) kappa (POLK)
Synonyms:	POLK Antibody, DINP Antibody, DNA polymerase kappa Antibody, DINB1 Antibody, DINB protein Antibody
Host	POLK antibody was produced in Goat
Clonality:	Polyclonal
Immunogen Species:	POLK antibody was raised against Human
Antigen Type:	Synthetic peptide
Immunogen:	POLK antibody was raised against synthetic peptide from human POLK.
Specificity:	Amino acids 817-830 of Human POLK (polymerase (DNA directed) kappa).
Epitope:	aa817-830
Reactivity:	Human
Purification:	Immunoaffinity purified
Presentation:	0.02 M potassium phosphate, 0.15 M sodium chloride, pH 7.2, 0.01% sodium azide.
Recommended Storage:	Long term: -20°C; Short term: +4°C; Avoid freeze-thaw cycles.
Usage Summary:	Immunohistochemistry: LS-B405 was validated for use in immunohistochemistry on a panel of 21 formalin-fixed, paraffin-embedded (FFPE) human tissues after heat induced antigen retrieval in pH 6.0 citrate buffer. After incubation with the primary antibody, slides were incubated with biotinylated secondary antibody, followed by alkaline phosphatase-streptavidin and chromogen. The stained slides were evaluated by a pathologist to confirm staining specificity. The optimal working concentration for LS-B405 was determined to be 5 ug/ml.
Uses:	IHC - Paraffin (5 µg/ml), Immunofluorescence, Western blot (1:500 - 1:3000), ELISA (1:2000 - 1:10000) (Optimal dilution to be determined by the researcher)
Size:	50 µg
Concentration:	1 mg/ml

Immunohistochemistry Image:



Anti-POLK antibody IHC of human prostate. Immunohistochemistry of formalin-fixed, paraffin-embedded tissue after heat-induced antigen retrieval. Antibody LS-B405 concentration 5 ug/ml.

Western Blot Image:



Anti-POLK Antibody - Western Blot. Western blot of Affinity Purified anti-POLK antibody shows detection of a band ~98 kD corresponding to human POLK (arrowhead). Approximately 35 ug of a HeLa whole cell lysate was separated by 4-20% SDS-PAGE and transferred onto nitrocellulose. After blocking the membrane was probed with the primary antibody diluted to 1:1000. Reaction occurred overnight at 4? followed by washes and reaction with a 1:20000 dilution of IRDye800 conjugated Rb-a-Goat IgG [H&L] MXHu (for 45 min at room temperature. IRDye800 fluorescence image was captured using the Odyssey Infrared Imaging System developed by LI-COR. IRDye is a trademark of LI-COR, Inc. Other detection systems will yield similar results.

Requested From:

Japan

Laboratory Reagent For In Vitro Research Use Only

Not for resale without prior written consent from LifeSpan BioSciences, Inc.

Created on 9/23/2014

© 2014 LifeSpan BioSciences