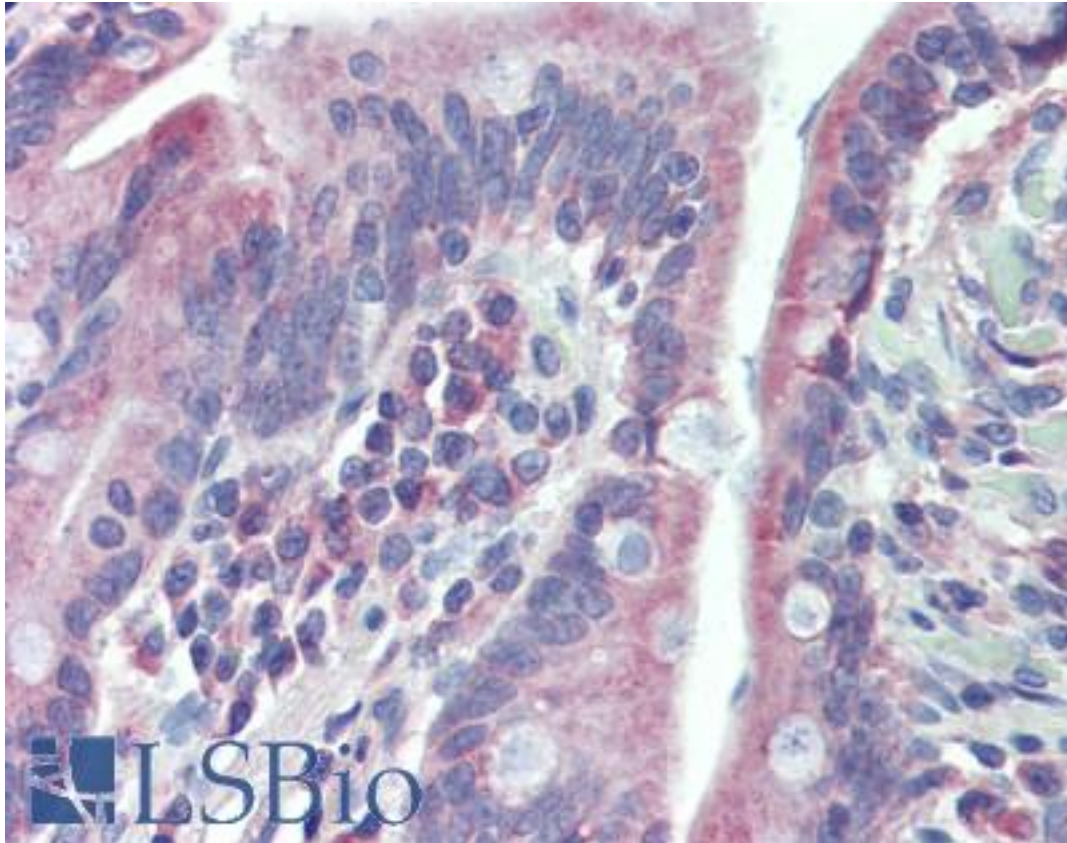


TGFB3 Rabbit anti-Human Polyclonal (C-Terminus) Antibody - LS-B4036 - LSBio

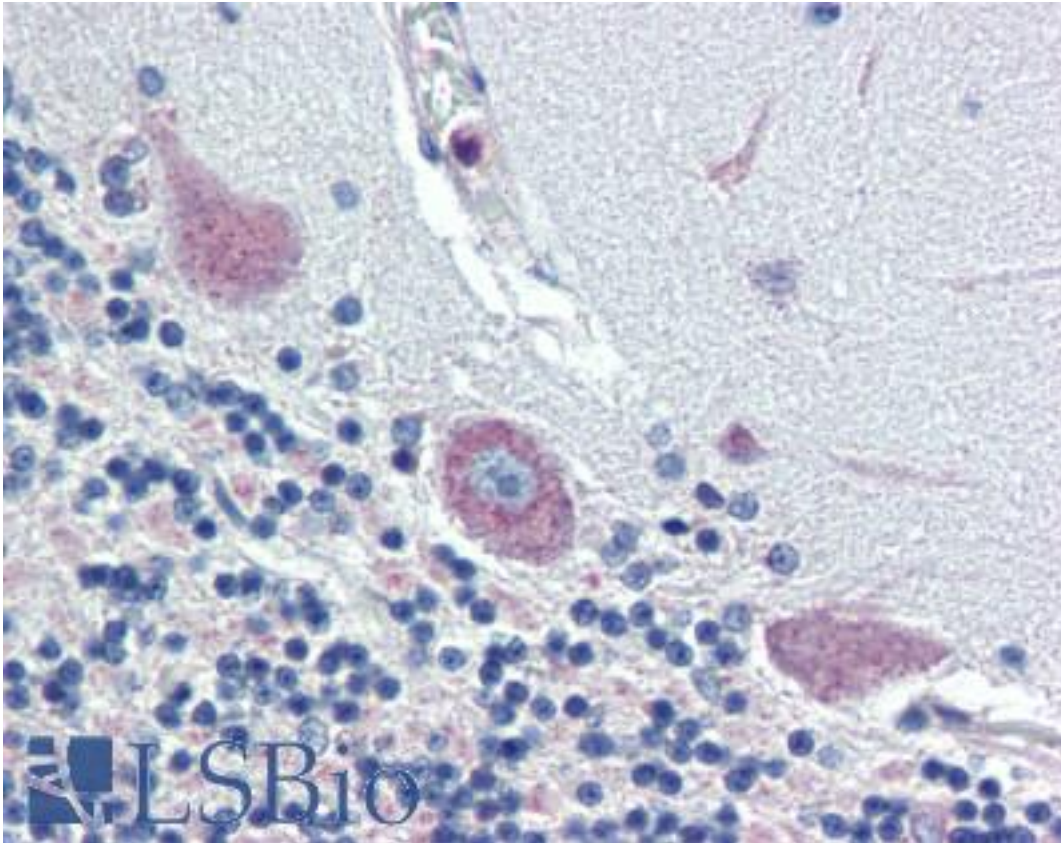
<b>CatalogID:</b>	LS-B4036
<b>Validation:</b>	This antibody replaces catalog number LS-C89658. It has been validated for use in the following assays: IHC-P.
<b>Target:</b>	transforming growth factor, beta 3 (TGFB3)
<b>Synonyms:</b>	TGFB3 Antibody, ARVD Antibody, TGF Beta 3 Antibody, TGF-beta-3 Antibody, TGF-beta3 Antibody
<b>Family / Subfamily:</b>	TGF beta / not assigned-TGF beta
<b>Host</b>	TGFB3 antibody was produced in Rabbit
<b>Clonality:</b>	Polyclonal
<b>Isotype:</b>	IgG
<b>Immunogen Species:</b>	TGFB3 antibody was raised against Human
<b>Antigen Type:</b>	Synthetic peptide
<b>Immunogen:</b>	TGFB3 antibody was raised against a synthetic peptide derived from the C-terminus of the precursor form of human TGF beta 3.
<b>Specificity:</b>	Recognizes human Transforming Growth Factor beta3 at ~47kD.
<b>Epitope:</b>	C-Terminus
<b>Reactivity:</b>	Human, Mouse, Rat
<b>Purification:</b>	Immunoaffinity purified
<b>Presentation:</b>	10 mM PBS, pH 7.4, BSA, 0.05% sodium azide.
<b>Recommended Storage:</b>	Short term 4°C, long term aliquot and store at -20°C, avoid freeze thaw cycles.
<b>Usage Summary:</b>	Immunohistochemistry: LS-B4036 was validated for use in immunohistochemistry on a panel of 21 formalin-fixed, paraffin-embedded (FFPE) human tissues after heat induced antigen retrieval in pH 6.0 citrate buffer. After incubation with the primary antibody, slides were incubated with biotinylated secondary antibody, followed by alkaline phosphatase-streptavidin and chromogen. The stained slides were evaluated by a pathologist to confirm staining specificity. The optimal working concentration for LS-B4036 was determined to be 5 ug/ml.
<b>Uses:</b>	IHC - Paraffin (5 µg/ml), Western blot, Immunoprecipitation (Optimal dilution to be determined by the researcher)
<b>Size:</b>	50 µl
<b>Concentration:</b>	0.2 mg/ml

**Immunohistochemistry Image:**



Anti-TGFB3 antibody IHC of human small intestine. Immunohistochemistry of formalin-fixed, paraffin-embedded tissue after heat-induced antigen retrieval. Antibody LS-B4036 concentration 5 ug/ml.

**Immunohistochemistry Image:**



Anti-TGFB3 antibody IHC of human brain, cerebellum. Immunohistochemistry of formalin-fixed, paraffin-embedded tissue after heat-induced antigen retrieval. Antibody LS-B4036 concentration 5 ug/ml.

**Requested From:**

Japan

Laboratory Reagent For In Vitro Research Use Only

Not for resale without prior written consent from LifeSpan BioSciences, Inc.

Created on 9/23/2014

© 2014 LifeSpan BioSciences