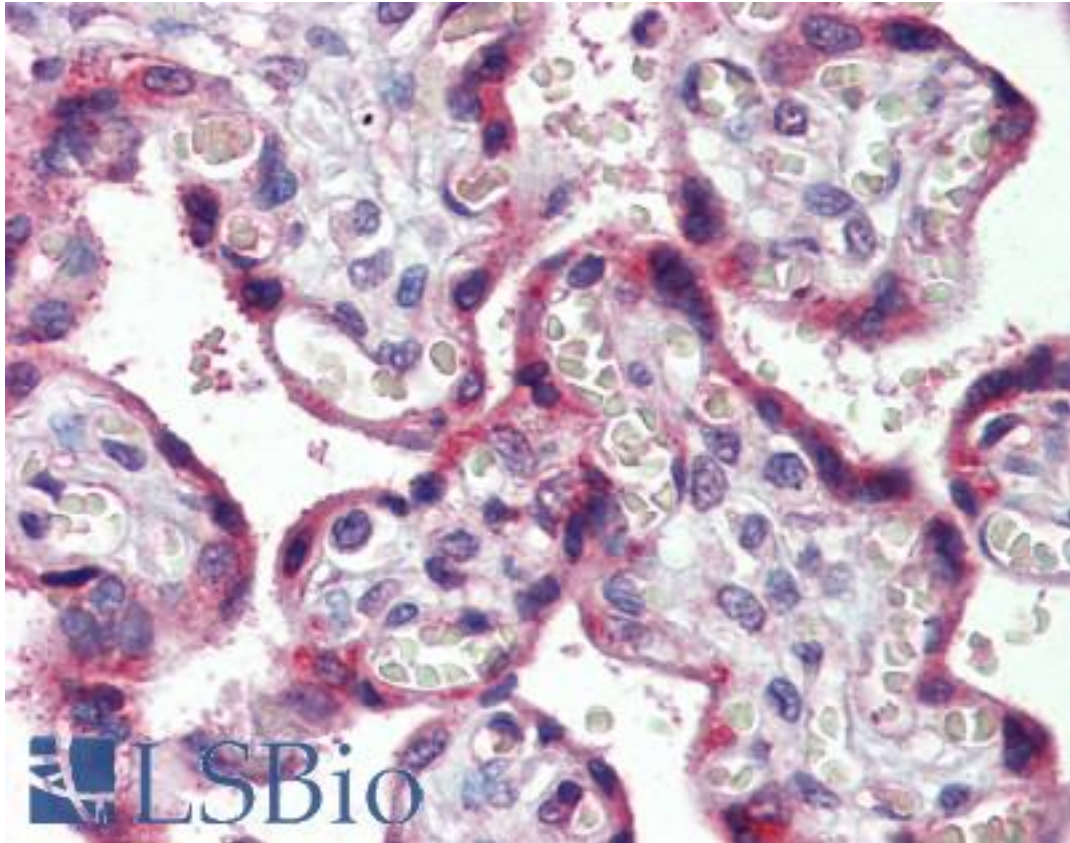


CCR4 Goat anti-Human Polyclonal (Extracellular Domain) Antibody - LS-B4033 - LSBio

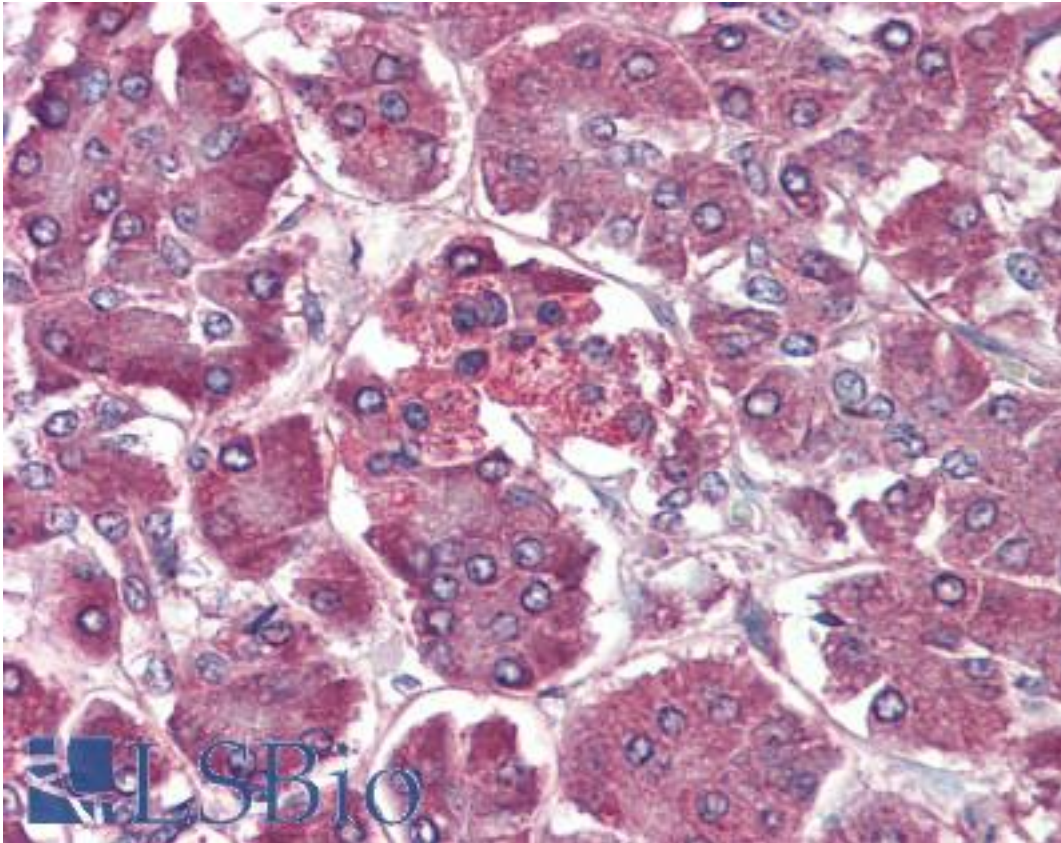
CatalogID:	LS-B4033
Validation:	This antibody replaces catalog number LS-C83946. It has been validated for use in the following assays: IHC-P.
Target:	chemokine (C-C motif) receptor 4 (CCR4)
Synonyms:	CCR4 Antibody, C-C chemokine receptor type 4 Antibody, CD194 Antibody, CD194 antigen Antibody, C-C CKR-4 Antibody, Chemr13 Antibody, CKR-4 Antibody, CC chemokine receptor 4 Antibody, CC-CKR-4 Antibody, CCR-4 Antibody, HGCN:14099 Antibody, C-c chemokine receptor 4 Antibody, Chemokine (C-C) receptor 4 Antibody, CKR4 Antibody, CMKBR4 Antibody, K5-5 Antibody
Family / Subfamily:	GPCR / Chemokine
Host	CCR4 antibody was produced in Goat
Clonality:	Polyclonal
Immunogen Species:	CCR4 antibody was raised against Human
Immunogen:	CCR4 antibody was raised against 17SNYYLYESIPKPCTKEGIKAFGE39 corresponding to human CCR4 extracellular domain. Percent identity by BLAST analysis: Human, Gorilla, Monkey, Marmoset (100%); Gibbon, Panda (96%); Hamster, Dog, Horse (91%); Elephant, Rabbit (87%); Mouse (83%).
Specificity:	Peptide sequence is <50% identical to other chemokine receptors in this region.
Epitope:	Extracellular Domain
Reactivity:	Human, Gorilla, Monkey
Predicted Reactivity:	Gibbon, Dog, Hamster, Horse
Purification:	Immunoaffinity purified
Presentation:	Phosphate buffered saline, 1 mg/ml BSA, 0.1% sodium azide
Recommended Storage:	Long term: -70°C; Short term: -20°C; Avoid freeze-thaw cycles.
Usage Summary:	Immunohistochemistry: LS-B4033 was validated for use in immunohistochemistry on a panel of 21 formalin-fixed, paraffin-embedded (FFPE) human tissues after heat induced antigen retrieval in pH 6.0 citrate buffer. After incubation with the primary antibody, slides were incubated with biotinylated secondary antibody, followed by alkaline phosphatase-streptavidin and chromogen. The stained slides were evaluated by a pathologist to confirm staining specificity. The optimal working concentration for LS-B4033 was determined to be 5 ug/ml.
Uses:	IHC - Paraffin (5 µg/ml), ICC (1:200), Western blot (1:500), Flow Cytometry (1:12), ELISA (1:30000) (Optimal dilution to be determined by the researcher)
Size:	50 µg
Concentration:	1 mg/ml

Immunohistochemistry Image:



Anti-CCR4 antibody IHC of human placenta. Immunohistochemistry of formalin-fixed, paraffin-embedded tissue after heat-induced antigen retrieval. Antibody LS-B4033 concentration 5 ug/ml.

Immunohistochemistry Image:



Anti-CCR4 antibody IHC of human pancreas. Immunohistochemistry of formalin-fixed, paraffin-embedded tissue after heat-induced antigen retrieval. Antibody LS-B4033 concentration 5 ug/ml.

Requested From:

Japan

Laboratory Reagent For In Vitro Research Use Only

Not for resale without prior written consent from LifeSpan BioSciences, Inc.

Created on 9/23/2014

© 2014 LifeSpan BioSciences