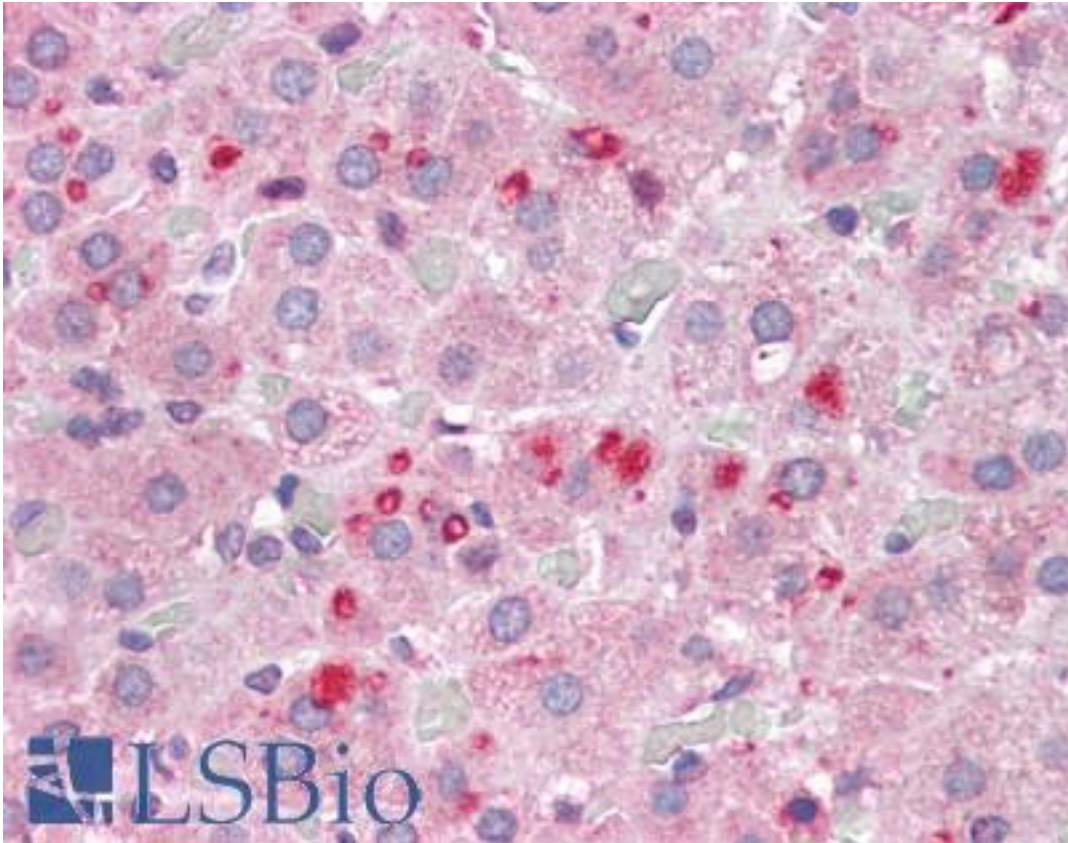


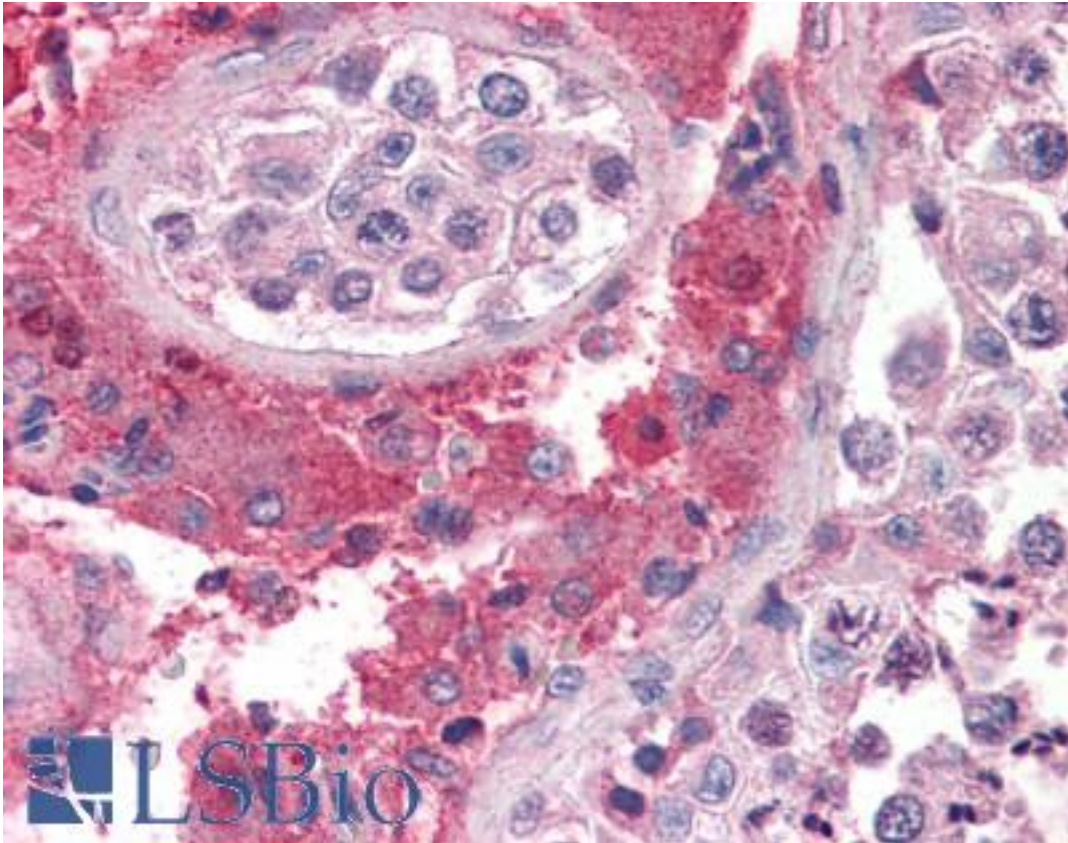
SET / TAF-I Goat anti-Human Polyclonal (N-Terminus) Antibody - LS-B4032 - LSBio	
CatalogID:	LS-B4032
Validation:	This antibody replaces catalog number LS-C55456. It has been validated for use in the following assays: IHC-P.
Target:	SET nuclear oncogene
Synonyms:	SET Antibody, 2PP2A Antibody, HLA-DR-associated protein II Antibody, I-2PP2A Antibody, TAF-IBETA Antibody, SET nuclear oncogene Antibody, TAF-I Antibody, Template-activating factor I Antibody, I2PP2A Antibody, IGAAD Antibody, IPP2A2 Antibody, PHAPII Antibody, Protein SET Antibody
Host	SET antibody was produced in Goat
Clonality:	Polyclonal
Immunogen Species:	SET / TAF-I antibody was raised against Human
Antigen Type:	Synthetic peptide
Immunogen:	SET / TAF-I antibody was raised against synthetic peptide SAPAAKVSKKELNS-C from the N-terminus of human SET (NP_003002.2). Percent identity by BLAST analysis: Human, Bovine, Opossum, Chicken (100%); Xenopus, Pufferfish, Zebrafish (93%); Mouse, Rat (86%).
Specificity:	Human SET. This antibody is expected to recognize isoform 2 (NP_003002.2).
Epitope:	N-Terminus
Reactivity:	Human, Bovine, Chicken
Predicted Reactivity:	Xenopus, Zebrafish
Purification:	Immunoaffinity purified
Presentation:	Tris-buffered saline, pH 7.3, 0.5% BSA, 0.02% sodium azide
Recommended Storage:	Store at -20°C. Minimize freezing and thawing.
Uses:	IHC - Paraffin (3.75 µg/ml), Western blot (1 - 3 µg/ml) (Optimal dilution to be determined by the researcher)
Size:	50 µg

Immunohistochemistry Image:



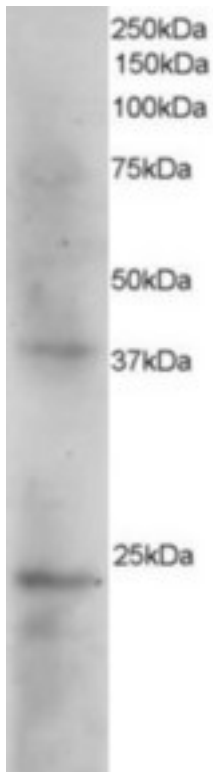
Anti-SET antibody IHC of human adrenal. Immunohistochemistry of formalin-fixed, paraffin-embedded tissue after heat-induced antigen retrieval. Antibody LS-B4032 concentration 3.75 ug/ml.

Immunohistochemistry Image:



Anti-SET antibody IHC of human testis. Immunohistochemistry of formalin-fixed, paraffin-embedded tissue after heat-induced antigen retrieval. Antibody LS-B4032 concentration 3.75 ug/ml.

Western Blot Image:



Antibody staining (2 ug/ml) of Human Kidney extracts (RIPA buffer, 35 ug total protein per lane). Primary incubated for 1 hour. Detected by Western blot of chemiluminescence.

Requested From:

Japan

Laboratory Reagent For In Vitro Research Use Only

Not for resale without prior written consent from LifeSpan BioSciences, Inc.

Created on 9/23/2014

© 2014 LifeSpan BioSciences