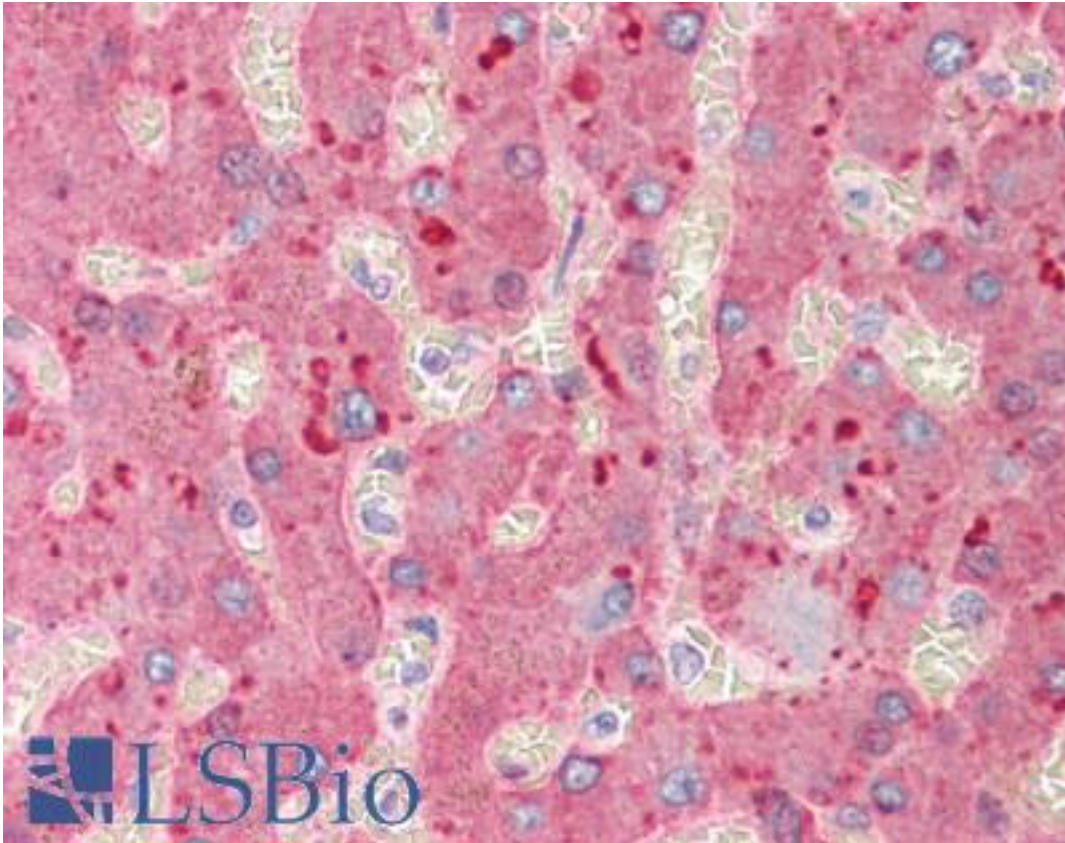


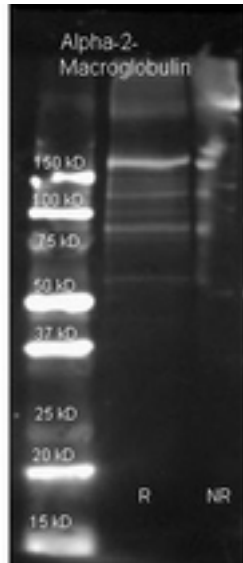
Alpha-2-Macroglobulin / A2M Goat anti-Human Polyclonal Antibody - LS-B403 - LSBio	
CatalogID:	LS-B403
Validation:	This antibody replaces catalog number LS-C19056. It has been validated for use in the following assays: IHC.
Target:	alpha-2-macroglobulin (A2M)
Synonyms:	A2M Antibody, CPAMD5 Antibody, A2MD Antibody, FWP007 Antibody, Alpha-2-M Antibody, Alpha-2-macroglobulin Antibody, S863-7 Antibody
Host	A2M antibody was produced in Goat
Clonality:	Polyclonal
Immunogen Species:	Alpha-2-Macroglobulin / A2M antibody was raised against Human
Specificity:	A2-Macroglobulin [Human Plasma].
Reactivity:	Human
Purification:	Purified IgG
Presentation:	0.02 M potassium phosphate buffer, 0.15 M sodium chloride, pH 7.2, 0.01% sodium azide.
Recommended Storage:	+4°C or -20°C, Avoid repeated freezing and thawing.
Usage Summary:	Immunohistochemistry: LS-B403 was validated for use in immunohistochemistry on a panel of 21 formalin-fixed, paraffin-embedded (FFPE) human tissues after heat induced antigen retrieval in pH 6.0 citrate buffer. After incubation with the primary antibody, slides were incubated with biotinylated secondary antibody, followed by alkaline phosphatase-streptavidin and chromogen. The stained slides were evaluated by a pathologist to confirm staining specificity. The optimal working concentration for LS-B403 was determined to be 2.5 ug/ml.
Uses:	IHC - Paraffin (2.5 µg/ml), Western blot (1:2000 - 1:20000), Immunoprecipitation, ELISA (1:80000 - 1:400000) (Optimal dilution to be determined by the researcher)
Size:	50 µl
Concentration:	10 mg/ml

Immunohistochemistry Image:



Anti-A2M / Alpha-2-Macroglobulin antibody IHC of human liver. Immunohistochemistry of formalin-fixed, paraffin-embedded tissue after heat-induced antigen retrieval. Antibody LS-B403 concentration 5 ug/ml.

Western Blot Image:



Alpha-2-Macroglobulin Polyclonal Antibody-Western blot. Goat anti-Alpha-2-Macroglobulin antibody (LS-B403 lot 20172) was used to detect Alpha-2-Macroglobulin under reducing (R) and non-reducing (NR) conditions. Reduced samples of purified target proteins contained 4% BME and were boiled for 5 minutes. Samples of ~1 ug of protein per lane were run by SDS-PAGE. Protein was transferred to nitrocellulose and probed with 1:3000 dilution of primary antibody (ON 4 C in MB-070). Detection shown was using Dylight 649 conjugated Donkey anti-goat (1:10K in TBS/MB-070) 1 hr RT. Images were collected using the BioRad VersaDoc System.

Requested From:

Japan

Laboratory Reagent For In Vitro Research Use Only

Not for resale without prior written consent from LifeSpan BioSciences, Inc.

Created on 9/23/2014

© 2014 LifeSpan BioSciences