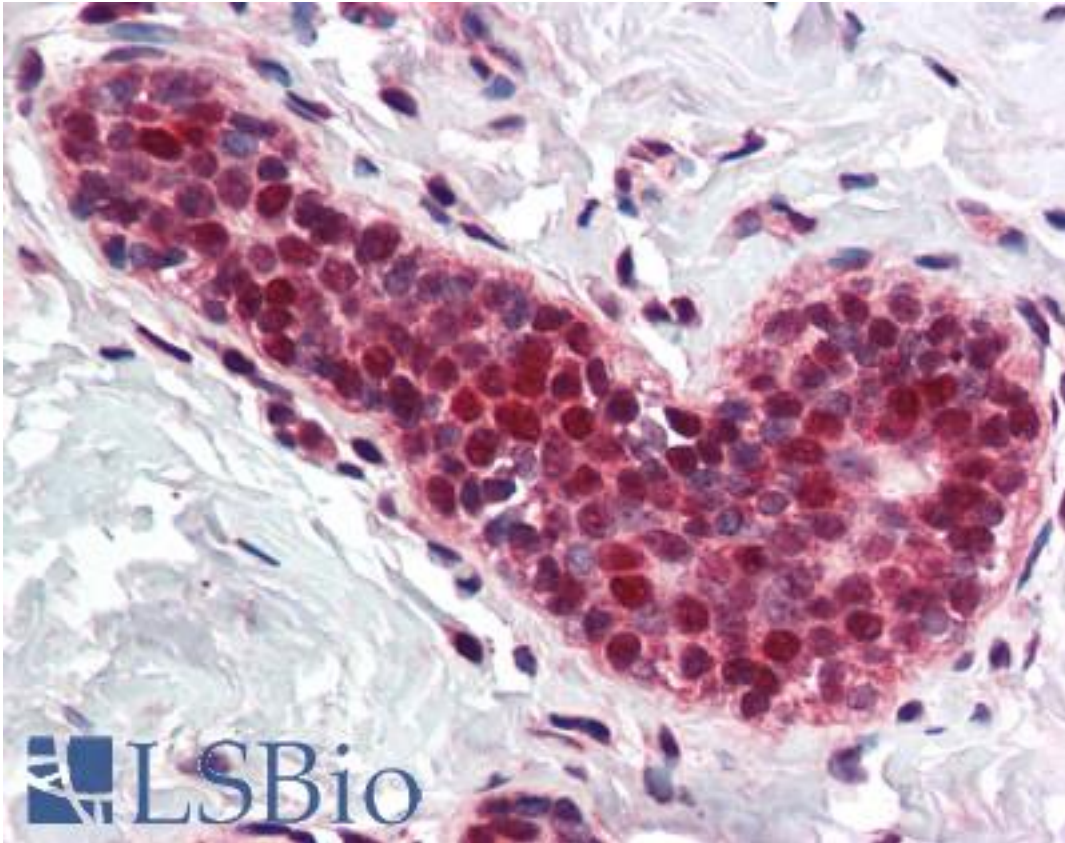


**PCNA / Cyclin Rabbit anti-Human Polyclonal (Internal) Antibody - LS-B402 - LSBio**

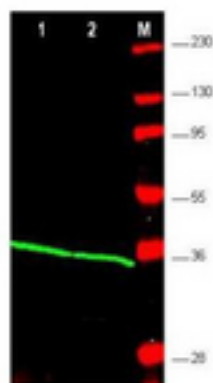
<b>CatalogID:</b>	LS-B402
<b>Validation:</b>	This antibody replaces catalog number LS-C18956. It has been validated for use in the following assays: IHC.
<b>Target:</b>	proliferating cell nuclear antigen (PCNA)
<b>Synonyms:</b>	PCNA Antibody, Cyclin Antibody
<b>Host</b>	PCNA antibody was produced in Rabbit
<b>Clonality:</b>	Polyclonal
<b>Immunogen Species:</b>	PCNA / Cyclin antibody was raised against Human
<b>Antigen Type:</b>	Synthetic peptide
<b>Immunogen:</b>	PCNA / Cyclin antibody was raised against synthetic peptide from human PCNA.
<b>Specificity:</b>	An internal region of human PCNA protein.
<b>Epitope:</b>	Internal
<b>Reactivity:</b>	Human, Monkey, Mouse, Rat, Bovine, Dog, Chicken, Xenopus, Fish
<b>Purification:</b>	Immunoaffinity purified
<b>Presentation:</b>	0.02 M potassium phosphate, 0.15 M sodium chloride, pH 7.2, 0.01% sodium azide.
<b>Recommended Storage:</b>	+4°C or -20°C, Avoid repeated freezing and thawing.
<b>Usage Summary:</b>	Immunohistochemistry: LS-B402 was validated for use in immunohistochemistry on a panel of 21 formalin-fixed, paraffin-embedded (FFPE) human tissues after heat induced antigen retrieval in pH 6.0 citrate buffer. After incubation with the primary antibody, slides were incubated with biotinylated secondary antibody, followed by alkaline phosphatase-streptavidin and chromogen. The stained slides were evaluated by a pathologist to confirm staining specificity. The optimal working concentration for LS-B402 was determined to be 2.5 ug/ml.
<b>Uses:</b>	IHC - Paraffin (2.5 µg/ml), Western blot (1:500 - 1:2000), ELISA (1:2000 - 1:8000) (Optimal dilution to be determined by the researcher)
<b>Size:</b>	50 µg
<b>Concentration:</b>	1 mg/ml

### Immunohistochemistry Image:



Anti-PCNA antibody IHC of human breast. Immunohistochemistry of formalin-fixed, paraffin-embedded tissue after heat-induced antigen retrieval. Antibody LS-B402 concentration 5 ug/ml.

### Western Blot Image:



Anti-PCNA Antibody - Western Blot. Western blot of affinity purified anti-PCNA antibody shows detection of PCNA protein in HEK293 (lane 1) and Jurkat (lane 2) whole cell extracts. Approximately 25 ug of lysate was loaded per lane onto a 4-20% gradient gel followed by transfer to nitrocellulose. After blocking, the membrane was incubated with the primary antibody diluted to 1:1000. The membrane was washed and reacted with a 1:10000 dilution of IRDye 800 Conjugated Affinity Purified Goat-anti-Rabbit IgG [H&L] MX10 ( 800 nm channel, green). Molecular weight estimation was made by comparison to prestained MW markers indicated at the right (lane M, 700 nm channel, red). Other detection systems will yield similar results.

<b>Requested From:</b>	Japan
Laboratory Reagent For In Vitro Research Use Only	
Not for resale without prior written consent from LifeSpan BioSciences, Inc.	
Created on 9/23/2014	
© 2014 LifeSpan BioSciences	