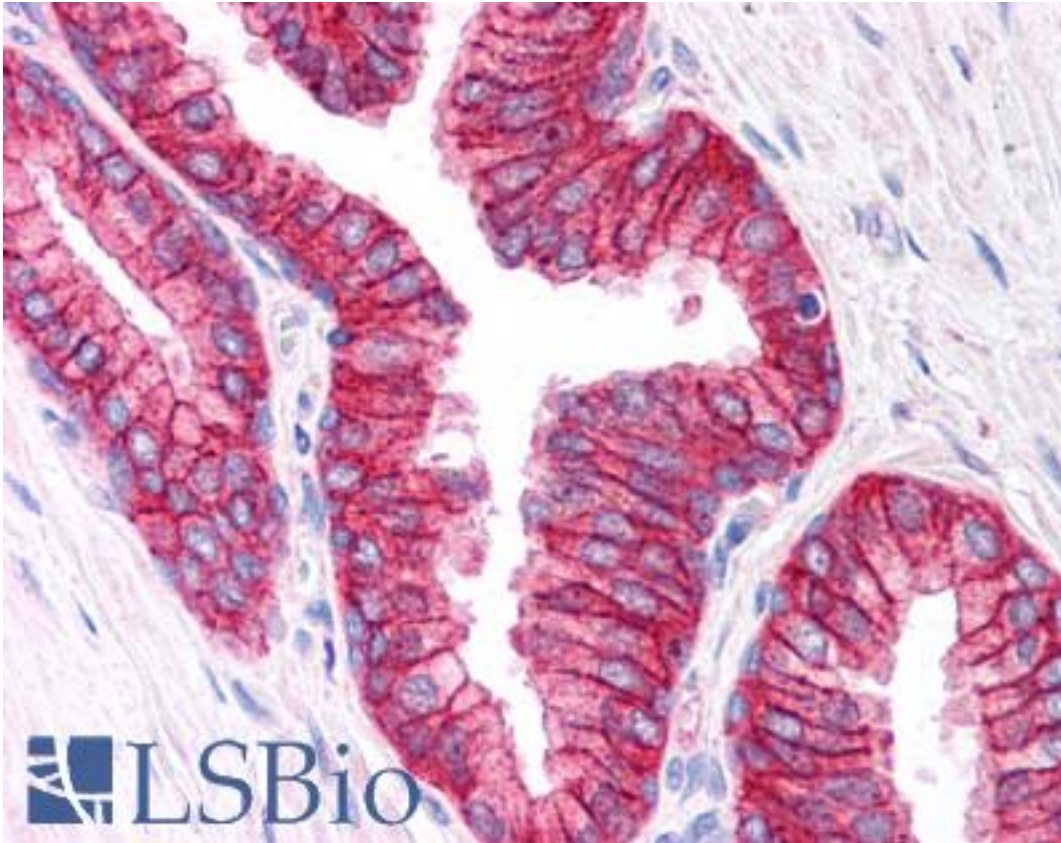


ABCC4 / MRP4 Goat anti-Human Polyclonal (C-Terminus) Antibody - LS-B4 - LSBio	
CatalogID:	LS-B4
Target:	ATP-binding cassette, sub-family C (CFTR/MRP), member 4 (ABCC4)
Synonyms:	ABCC4 Antibody, EST170205 Antibody, MOAT-B Antibody, Multidrug resistance protein 4 Antibody, MOATB Antibody, MRP4 Antibody
Family / Subfamily:	Transporter / ATP-binding cassette - ABCC/MRP
Host	ABCC4 antibody was produced in Goat
Clonality:	Polyclonal
Immunogen Species:	ABCC4 / MRP4 antibody was raised against Human
Antigen Type:	Synthetic peptide
Immunogen:	ABCC4 / MRP4 antibody was raised against synthetic peptide C-NGQPSTLTIFETAL from the C-terminus of human ABCC4 / MRP4 (NP_005836.2). Percent identity by BLAST analysis: Human, Gorilla, Gibbon, Monkey (100%); Mouse, Rat, Hamster, Elephant, Horse, Rabbit (93%); Marmoset, Dog (86%).
Specificity:	Human ABCC4 / MRP4. This antibody is expected to recognize isoform 1 (NP_005836.2) only.
Epitope:	C-Terminus
Reactivity:	Human, Gorilla, Gibbon, Monkey
Predicted Reactivity:	Mouse, Rat, Hamster, Horse, Rabbit
Purification:	Immunoaffinity purified
Presentation:	Tris-buffered saline, pH 7.3, 0.5% BSA, 0.02% sodium azide
Recommended Storage:	Store at -20°C. Minimize freezing and thawing.
Usage Summary:	Immunohistochemistry: LS-B4 was validated for use in immunohistochemistry on a panel of 21 formalin-fixed, paraffin-embedded (FFPE) human tissues after heat induced antigen retrieval in pH 6.0 citrate buffer. After incubation with the primary antibody, slides were incubated with biotinylated secondary antibody, followed by alkaline phosphatase-streptavidin and chromogen. The stained slides were evaluated by a pathologist to confirm staining specificity. The optimal working concentration for LS-B4 was determined to be 2.5 ug/ml.
Uses:	IHC - Paraffin (2.5 µg/ml), ELISA (1:64000) (Optimal dilution to be determined by the researcher)
Size:	50 µg
Concentration:	0.5 mg/ml

Immunohistochemistry Image:



Anti-ABCC4 / MRP4 antibody IHC of human prostate. Immunohistochemistry of formalin-fixed, paraffin-embedded tissue after heat-induced antigen retrieval. Antibody LS-B4 concentration 5 ug/ml.

Requested From:

Japan

Laboratory Reagent For In Vitro Research Use Only

Not for resale without prior written consent from LifeSpan BioSciences, Inc.

Created on 9/23/2014

© 2014 LifeSpan BioSciences