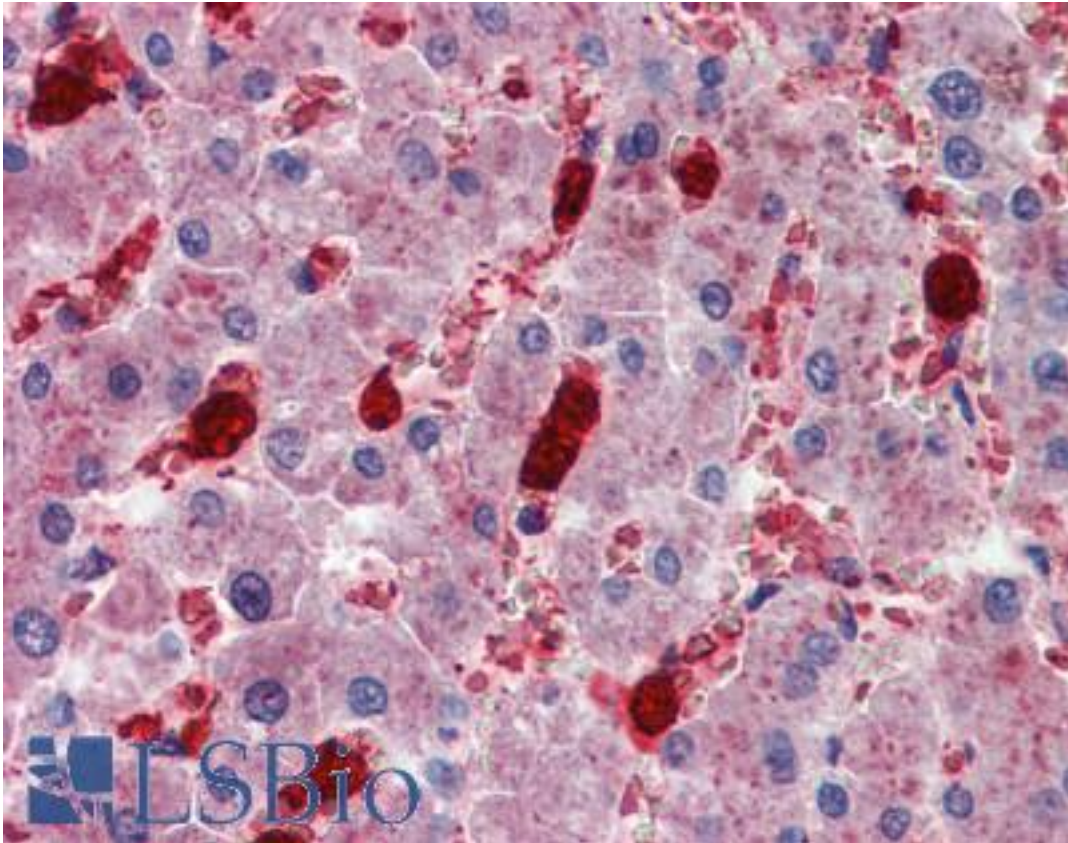


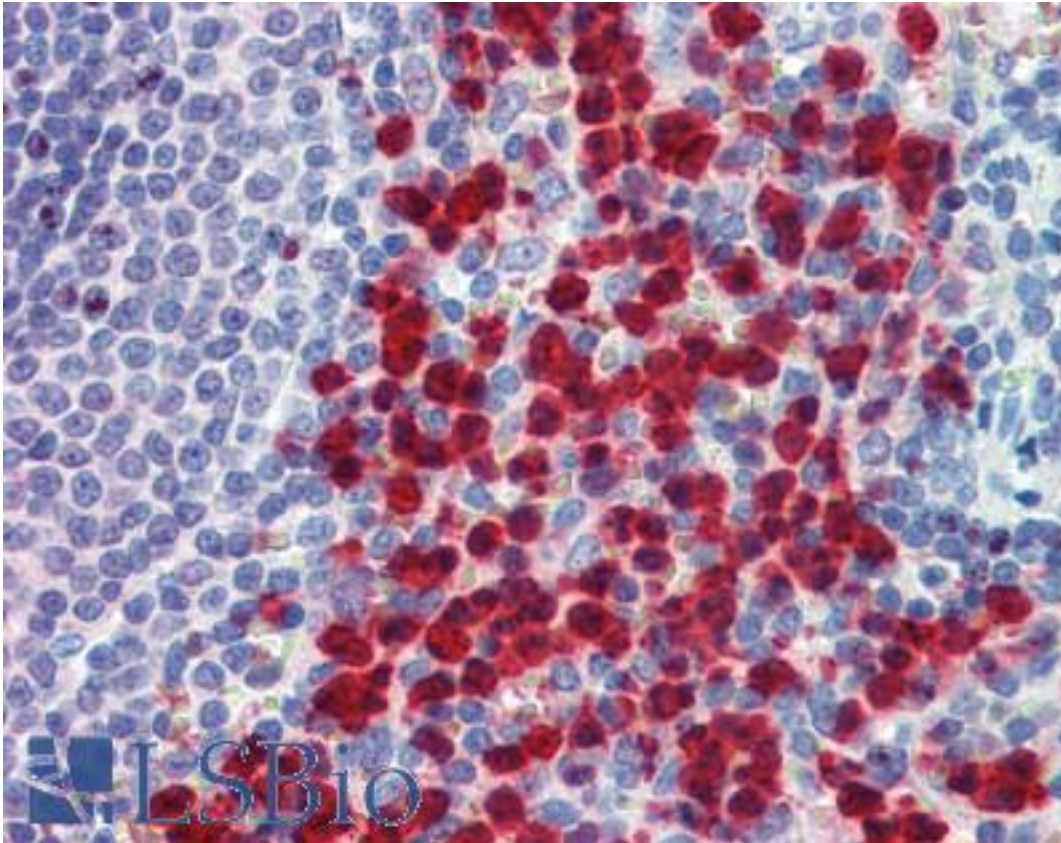
IGSF4C / CADM4 Goat anti-Human Polyclonal (C-Terminus) Antibody - LS-B3973 - LSBio	
CatalogID:	LS-B3973
Validation:	This antibody replaces catalog number LS-C54601. It has been validated for use in the following assays: IHC-P.
Target:	cell adhesion molecule 4 (CADM4)
Synonyms:	CADM4 Antibody, Cell adhesion molecule 4 Antibody, Nectin-like 4 Antibody, Nectin-like protein 4 Antibody, Necl-4 Antibody, NECL4 Antibody, IGSF4C Antibody, TSLC1-like 2 Antibody, SynCAM4 Antibody, TSLC1-like protein 2 Antibody, TSLL2 Antibody
Host	CADM4 antibody was produced in Goat
Clonality:	Polyclonal
Immunogen Species:	IGSF4C / CADM4 antibody was raised against Human
Antigen Type:	Synthetic peptide
Immunogen:	IGSF4C / CADM4 antibody was raised against synthetic peptide C-REAFLNGSDGHRKE from the C-terminus of human CADM4 / NECL-4 (NP_660339.1). Percent identity by BLAST analysis: Human, Gorilla, Gibbon, Marmoset, Rat, Elephant, Panda, Bovine, Dog, Bat, Horse, Rabbit, Pig (100%); Mouse, Opossum (93%); Xenopus (80%).
Specificity:	Human CADM4 / NECL-4.
Epitope:	C-Terminus
Reactivity:	Human, Gorilla, Gibbon, Monkey, Rat, Bat, Bovine, Dog, Horse, Pig, Rabbit
Predicted Reactivity:	Mouse
Purification:	Immunoaffinity purified
Presentation:	Tris-buffered saline, pH 7.3, 0.5% BSA, 0.02% sodium azide
Recommended Storage:	Store at -20°C. Minimize freezing and thawing.
Uses:	IHC - Paraffin (2.5 µg/ml), Western blot (0.03 - 0.1 µg/ml), ELISA (1:32000) (Optimal dilution to be determined by the researcher)
Size:	50 µg
Concentration:	0.5 mg/ml

Immunohistochemistry Image:



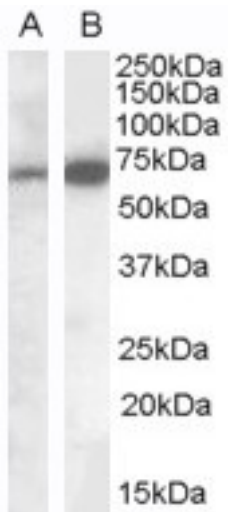
Anti-CADM4 / NECL-4 antibody IHC of human liver. Immunohistochemistry of formalin-fixed, paraffin-embedded tissue after heat-induced antigen retrieval. Antibody LS-B3973 concentration 2.5 ug/ml.

Immunohistochemistry Image:



Anti-CADM4 / NECL-4 antibody IHC of human spleen. Immunohistochemistry of formalin-fixed, paraffin-embedded tissue after heat-induced antigen retrieval. Antibody LS-B3973 concentration 2.5 ug/ml.

Western Blot Image:



Staining of Human Brain (Cerebellum) lysate (35 ug protein in RIPA buffer). B) (0.05 ug/ml) Primary incubation was 1 hour. Detected by chemiluminescence.

Requested From:

Japan

Laboratory Reagent For In Vitro Research Use Only

Not for resale without prior written consent from LifeSpan BioSciences, Inc.

Created on 9/23/2014

© 2014 LifeSpan BioSciences