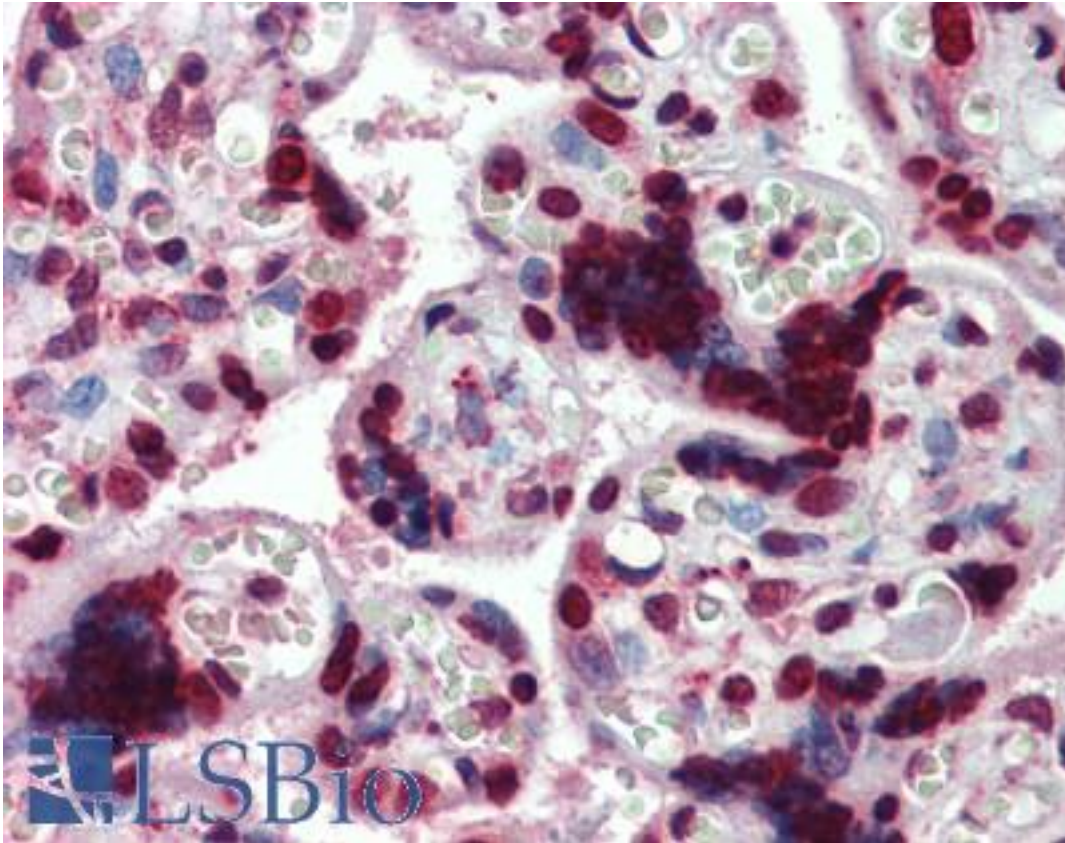


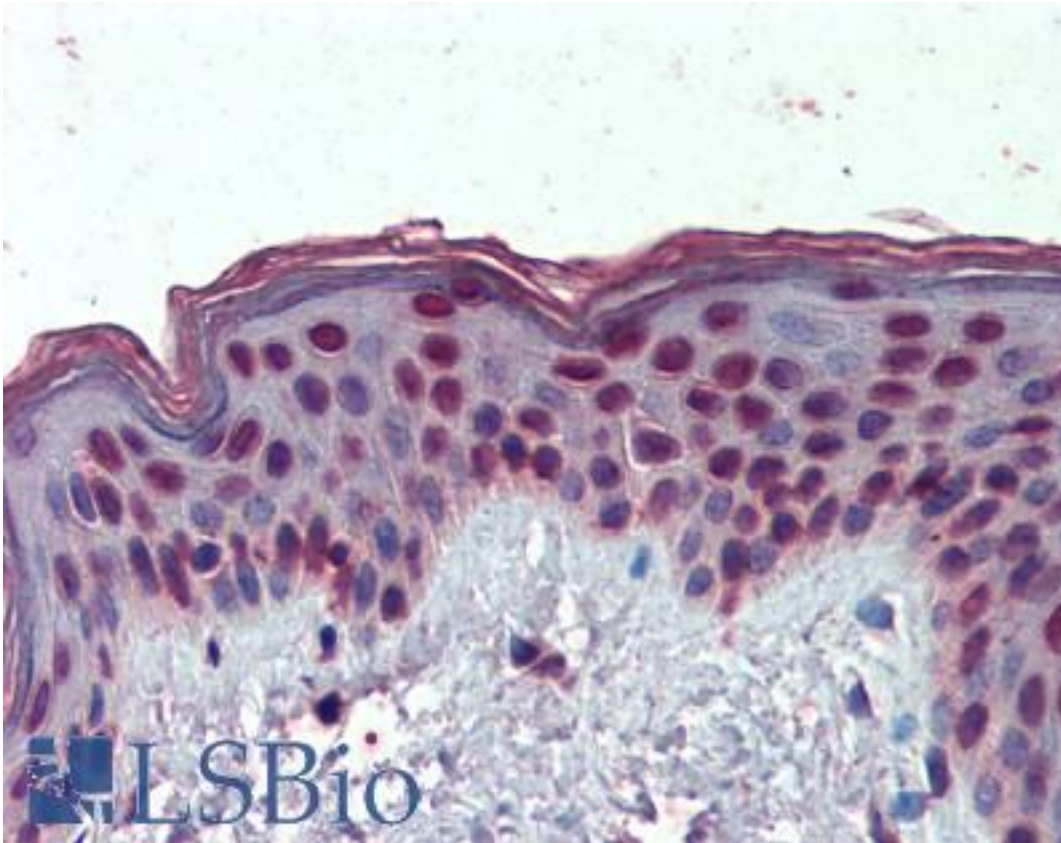
HMGIY / HMGA1 Goat anti-Human Polyclonal Antibody - LS-B3972 - LSBio	
CatalogID:	LS-B3972
Validation:	This antibody replaces catalog number LS-C102870. It has been validated for use in the following assays: IHC-P.
Target:	high mobility group AT-hook 1 (HMGA1)
Synonyms:	HMGA1 Antibody, High mobility group protein A1 Antibody, High mobility group protein R Antibody, HMG-R Antibody, Hmg-i Antibody, HMGIY Antibody, High mobility group AT-hook 1 Antibody, HMG-I(Y) Antibody, HMGA1A Antibody
Host	HMGA1 antibody was produced in Goat
Clonality:	Polyclonal
Immunogen Species:	HMGIY / HMGA1 antibody was raised against Human
Antigen Type:	Synthetic peptide
Immunogen:	HMGIY / HMGA1 antibody was raised against synthetic peptide C-SQPLASKQEKGDT from an internal region (near N-terminus) of human HMGA1 (NP_665906.1; NP_002122.1). Percent identity by BLAST analysis: Human, Gorilla, Monkey, Marmoset, Mouse, Rat, Hamster, Elephant, Panda, Bat, Dog, Horse, Rabbit, Pig (100%); Gibbon, Bovine, Opossum (92%).
Specificity:	Human HMGA1. This antibody is expected to recognize reported isoforms a (NP_665906.1, NP_665908.1, NP_665911.1) and b (NP_002122.1, NP_665910.1, NP_665912.1). This antibody is not expected to cross-react with HMGA2.
Reactivity:	Human, Gorilla, Monkey, Mouse, Rat, Bat, Dog, Hamster, Horse, Pig, Rabbit
Predicted Reactivity:	Gibbon, Bovine
Purification:	Immunoaffinity purified
Presentation:	Tris-buffered saline, pH 7.3, 0.5% BSA, 0.02% sodium azide
Recommended Storage:	Store at -20°C. Minimize freezing and thawing.
Uses:	IHC - Paraffin (3.75 µg/ml), Western blot (0.5 - 1 µg/ml), ELISA (1:16000) (Optimal dilution to be determined by the researcher)
Size:	50 µg
Concentration:	0.5 mg/ml

Immunohistochemistry Image:



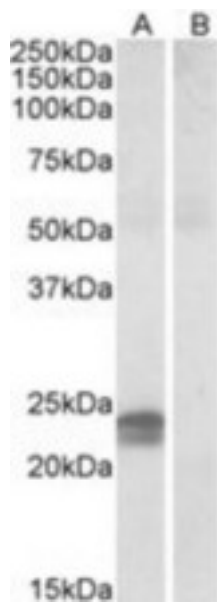
Anti-HMGA1 antibody IHC of human placenta. Immunohistochemistry of formalin-fixed, paraffin-embedded tissue after heat-induced antigen retrieval. Antibody LS-B3972 concentration 3.75 ug/ml.

Immunohistochemistry Image:



Anti-HMGA1 antibody IHC of human skin. Immunohistochemistry of formalin-fixed, paraffin-embedded tissue after heat-induced antigen retrieval. Antibody LS-B3972 concentration 3.75 ug/ml.

Western Blot Image:



Staining (0.5 ug/ml) of Human Pancreas lysate (35 ug protein in RIPA buffer) with (B) and without (A) blocking with the immunizing peptide. Primary incubation was 1 hour. Detected by chemiluminescence.

Requested From:	Japan
Laboratory Reagent For In Vitro Research Use Only	
Not for resale without prior written consent from LifeSpan BioSciences, Inc.	
Created on 9/23/2014	
© 2014 LifeSpan BioSciences	