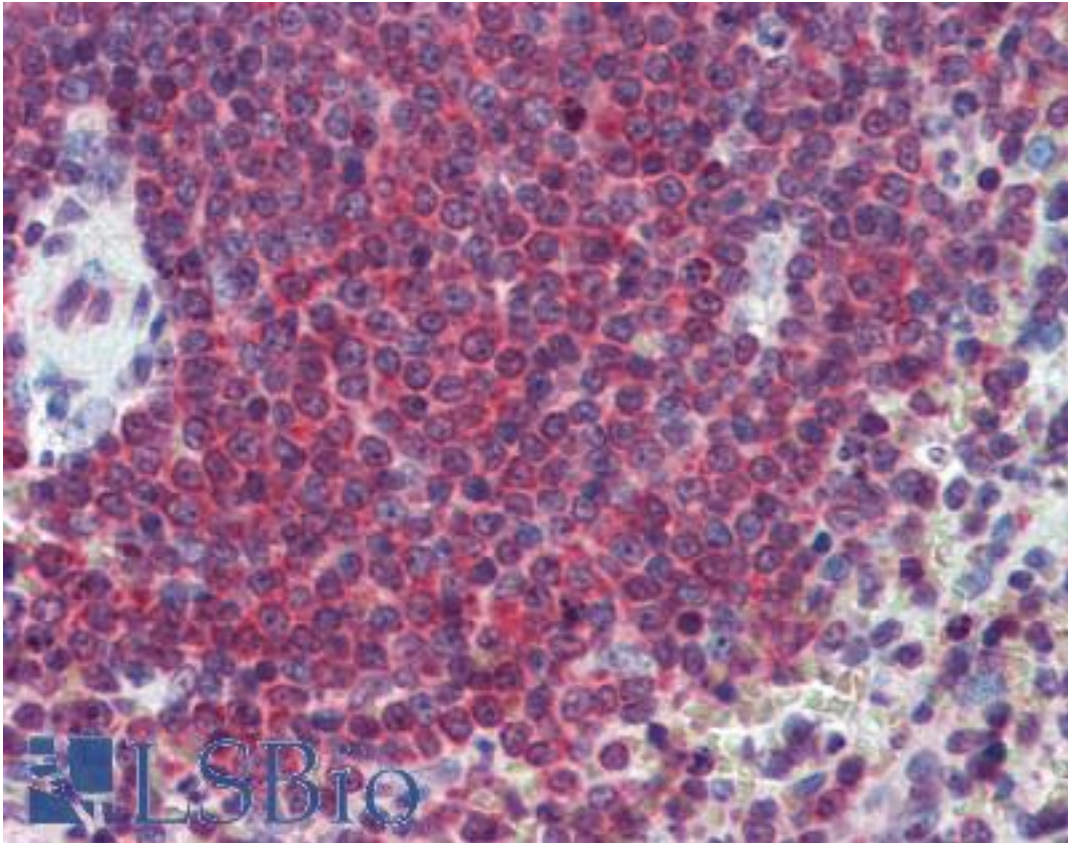


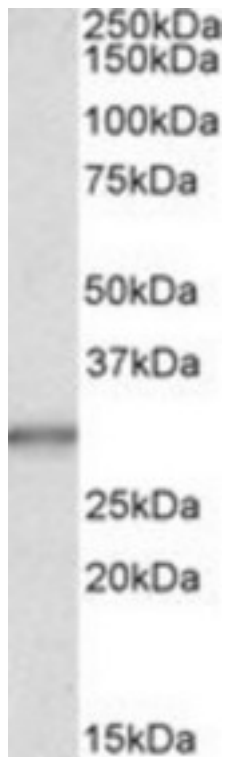
CA1 / Carbonic Anhydrase I Goat anti-Human Polyclonal Antibody - LS-B3971 - LSBio	
<b>CatalogID:</b>	LS-B3971
<b>Validation:</b>	This antibody replaces catalog number LS-C102866. It has been validated for use in the following assays: IHC-P.
<b>Target:</b>	carbonic anhydrase I (CA1)
<b>Synonyms:</b>	CA1 Antibody, CAB Antibody, Carbonic anhydrase 1 Antibody, CAR1 Antibody, Carbonate dehydratase I Antibody, Carbonic dehydratase Antibody, CA-I Antibody, Carbonic anhydrase B Antibody, Carbonic anhydrase I Antibody
<b>Host</b>	CA1 antibody was produced in Goat
<b>Clonality:</b>	Polyclonal
<b>Immunogen Species:</b>	CA1 / Carbonic Anhydrase I antibody was raised against Human
<b>Antigen Type:</b>	Synthetic peptide
<b>Immunogen:</b>	CA1 / Carbonic Anhydrase I antibody was raised against synthetic peptide C-QAIKTKGKRAP from an internal region of human CA1 / Carbonic Anhydrase I (NP_001729.1). Percent identity by BLAST analysis: Human, Chimpanzee, Gorilla, Gibbon (100%); Monkey, Elephant (91%); Marmoset (82%).
<b>Specificity:</b>	Human CA1 / Carbonic Anhydrase I. Reported variants represent identical protein: NP_001729.1, NP_001122303.1, NP_001122302.1, NP_001122301.1.
<b>Reactivity:</b>	Human, Chimpanzee, Gorilla, Gibbon
<b>Predicted Reactivity:</b>	Monkey
<b>Purification:</b>	Immunoaffinity purified
<b>Presentation:</b>	Tris-buffered saline, pH 7.3, 0.5% BSA, 0.02% sodium azide
<b>Recommended Storage:</b>	Short term 4°C, long term aliquot and store at -20°C, avoid freeze thaw cycles.
<b>Uses:</b>	IHC - Paraffin (2.5 µg/ml), Western blot (0.03 - 0.1 µg/ml), ELISA (1:64000) (Optimal dilution to be determined by the researcher)
<b>Size:</b>	50 µg
<b>Concentration:</b>	0.5 mg/ml

**Immunohistochemistry Image:**



Anti-CA1 / Carbonic Anhydrase I antibody IHC of human spleen. Immunohistochemistry of formalin-fixed, paraffin-embedded tissue after heat-induced antigen retrieval. Antibody LS-B3971 concentration 2.5 ug/ml.

**Western Blot Image:**



Staining (0.03 ug/ml) of Human Liver lysate (35 ug protein in RIPA buffer). Primary incubation was 1 hour. Detected by chemiluminescence.

**Requested From:**

Japan

Laboratory Reagent For In Vitro Research Use Only

Not for resale without prior written consent from LifeSpan BioSciences, Inc.

Created on 9/23/2014

© 2014 LifeSpan BioSciences