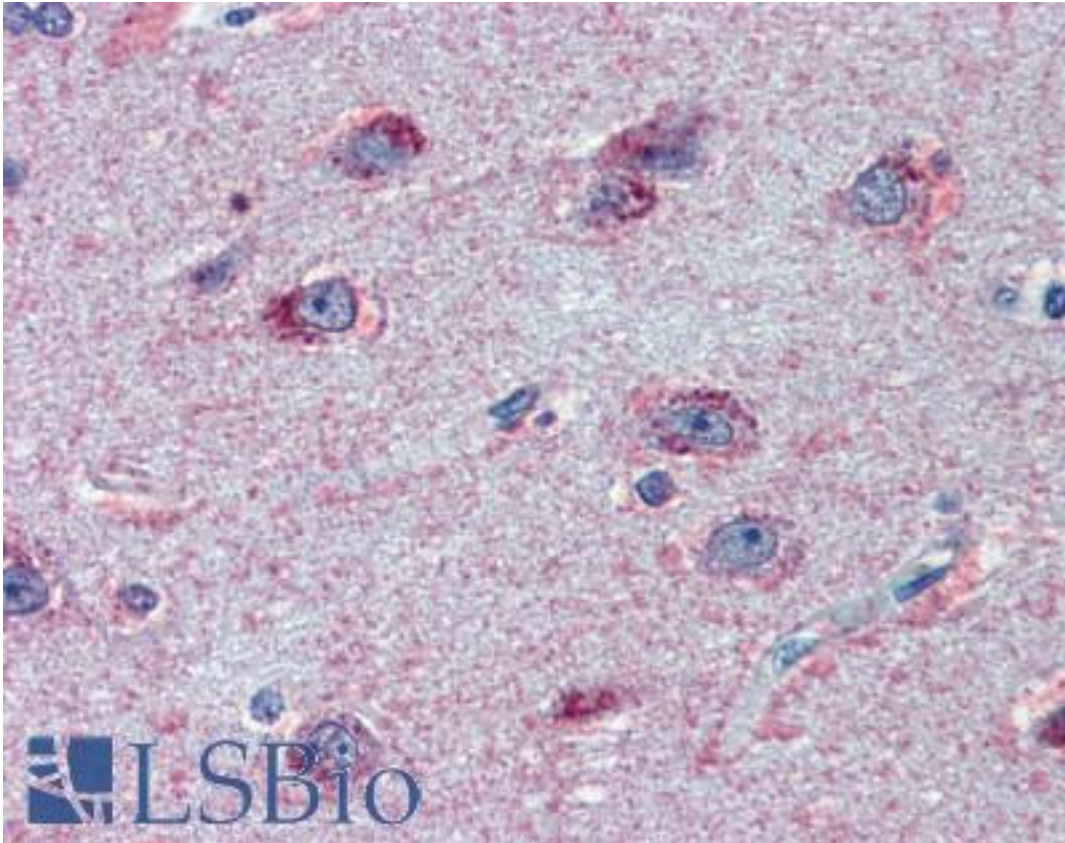


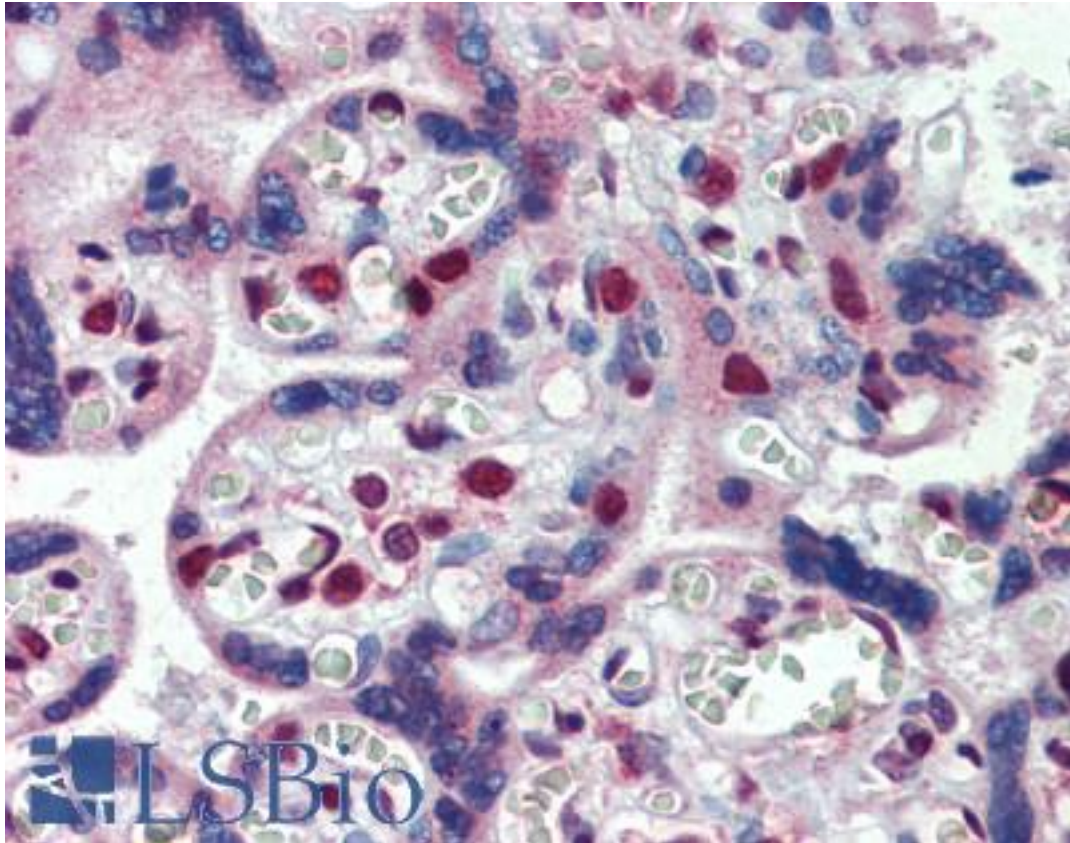
FMR1 / FMRP Goat anti-Human Polyclonal Antibody - LS-B3970 - LSBio	
<b>CatalogID:</b>	LS-B3970
<b>Validation:</b>	This antibody replaces catalog number LS-C101313. It has been validated for use in the following assays: IHC-P.
<b>Target:</b>	fragile X mental retardation 1 (FMR1)
<b>Synonyms:</b>	FMR1 Antibody, FMRP Antibody, POF Antibody, Protein FMR-1 Antibody, Premature ovarian failure 1 Antibody, Fragile X mental retardation 1 Antibody, FRAXA Antibody, POF1 Antibody
<b>Host</b>	FMR1 antibody was produced in Goat
<b>Clonality:</b>	Polyclonal
<b>Immunogen Species:</b>	FMR1 / FMRP antibody was raised against Human
<b>Antigen Type:</b>	Synthetic peptide
<b>Immunogen:</b>	FMR1 / FMRP antibody was raised against synthetic peptide C-NPNKPATKDTFHKIK from an internal region of human FMR1 (NP_002015.1). Percent identity by BLAST analysis: Human, Gorilla, Orangutan, Gibbon, Monkey, Marmoset, Mouse, Rat, Hamster, Elephant, Panda, Dog, Bat, Rabbit, Pig, Opossum, Turkey, Chicken, Platypus (100%); Bovine (93%); Xenopus (80%).
<b>Specificity:</b>	Human FMR1.
<b>Reactivity:</b>	Human, Gorilla, Orangutan, Gibbon, Monkey, Mouse, Rat, Bat, Dog, Hamster, Pig, Rabbit
<b>Predicted Reactivity:</b>	Bovine
<b>Non-Reactivity:</b>	Chicken
<b>Purification:</b>	Immunoaffinity purified
<b>Presentation:</b>	Tris-buffered saline, pH 7.3, 0.5% BSA, 0.02% sodium azide
<b>Recommended Storage:</b>	Store at -20°C. Minimize freezing and thawing.
<b>Usage Summary:</b>	Approx 70Da band observed in lysates of cell lines HeLa and Jurkat (calculated MW of 71.2kDa according to NP_002015.1).
<b>Uses:</b>	IHC - Paraffin (2.5 µg/ml), Western blot (0.3 - 1 µg/ml), ELISA (1:32000) (Optimal dilution to be determined by the researcher)
<b>Size:</b>	50 µg
<b>Concentration:</b>	0.5 mg/ml

**Immunohistochemistry Image:**



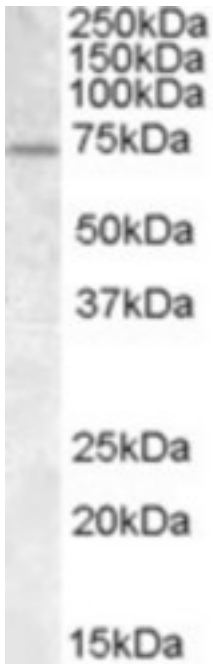
Anti-FMR1 antibody IHC of human brain, cortex. Immunohistochemistry of formalin-fixed, paraffin-embedded tissue after heat-induced antigen retrieval. Antibody LS-B3970 concentration 2.5 ug/ml.

**Immunohistochemistry Image:**



Anti-FMR1 antibody IHC of human placenta. Immunohistochemistry of formalin-fixed, paraffin-embedded tissue after heat-induced antigen retrieval. Antibody LS-B3970 concentration 2.5 ug/ml.

**Western Blot Image:**



Antibody (0.3 ug/ml) staining of HeLa lysate (35 ug protein in RIPA buffer). Primary incubation was 1 hour. Detected by chemiluminescence.

**Requested From:**

Japan

Laboratory Reagent For In Vitro Research Use Only

Not for resale without prior written consent from LifeSpan BioSciences, Inc.

Created on 9/23/2014

© 2014 LifeSpan BioSciences