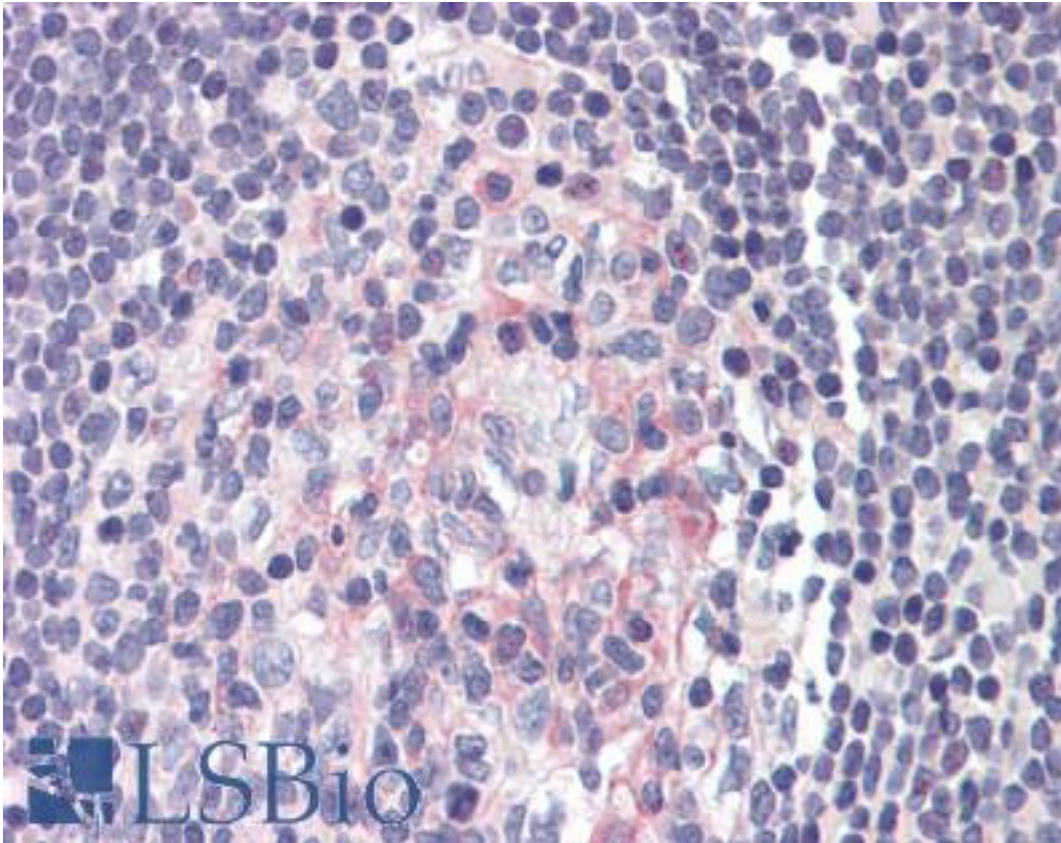


NFKBIB / IKB Beta / IKBB Rabbit anti-Human Polyclonal (C-Terminus) Antibody - LS-B397 - LSBio	
CatalogID:	LS-B397
Validation:	This antibody replaces catalog number LS-C19026. It has been validated for use in the following assays: IHC.
Target:	nuclear factor of kappa light polypeptide gene enhancer in B-cells inhibitor, beta (NFKBIB)
Synonyms:	NFKBIB Antibody, IKBB Antibody, I-kappa-B-beta Antibody, IkappaBbeta Antibody, NF-kappa-B inhibitor beta Antibody, Ikb-beta Antibody, TRIP9 Antibody, TRIP-9 Antibody, Ikb-B Antibody, NF-kappa-BIB Antibody, TR-interacting protein 9 Antibody
Host	NFKBIB antibody was produced in Rabbit
Clonality:	Polyclonal
Immunogen Species:	NFKBIB / IKB Beta / IKBB antibody was raised against Human
Specificity:	IkbB peptide corresponding to a region near the C-terminus of the human protein conjugated to Keyhole Limpet Hemocyanin (KLH).
Epitope:	C-Terminus
Reactivity:	Human, Mouse, Rat
Purification:	Delipidated and defibrinated
Presentation:	0.01% sodium azide
Recommended Storage:	Store vial at -20 C or below prior to opening. Dilute only prior to immediate use. Aliquot contents and freeze at -20 C or below. Avoid cycles of freezing and thawing.
Usage Summary:	Immunohistochemistry: LS-B397 was validated for use in immunohistochemistry on a panel of 21 formalin-fixed, paraffin-embedded (FFPE) human tissues after heat induced antigen retrieval in pH 6.0 citrate buffer. After incubation with the primary antibody, slides were incubated with biotinylated secondary antibody, followed by alkaline phosphatase-streptavidin and chromogen. The stained slides were evaluated by a pathologist to confirm staining specificity. The optimal working concentration for LS-B397 was determined to be 1:500.
Uses:	IHC - Paraffin (1:500), Immunofluorescence, Western blot, Immunoprecipitation, ELISA (Optimal dilution to be determined by the researcher)
Size:	50 µl

Immunohistochemistry Image:



Anti-NFKBIB antibody IHC of human small intestine, Peyer's patch. Immunohistochemistry of formalin-fixed, paraffin-embedded tissue after heat-induced antigen retrieval. Antibody LS-B397 dilution 1:500.

Requested From:

Japan

Laboratory Reagent For In Vitro Research Use Only

Not for resale without prior written consent from LifeSpan BioSciences, Inc.

Created on 9/23/2014

© 2014 LifeSpan BioSciences