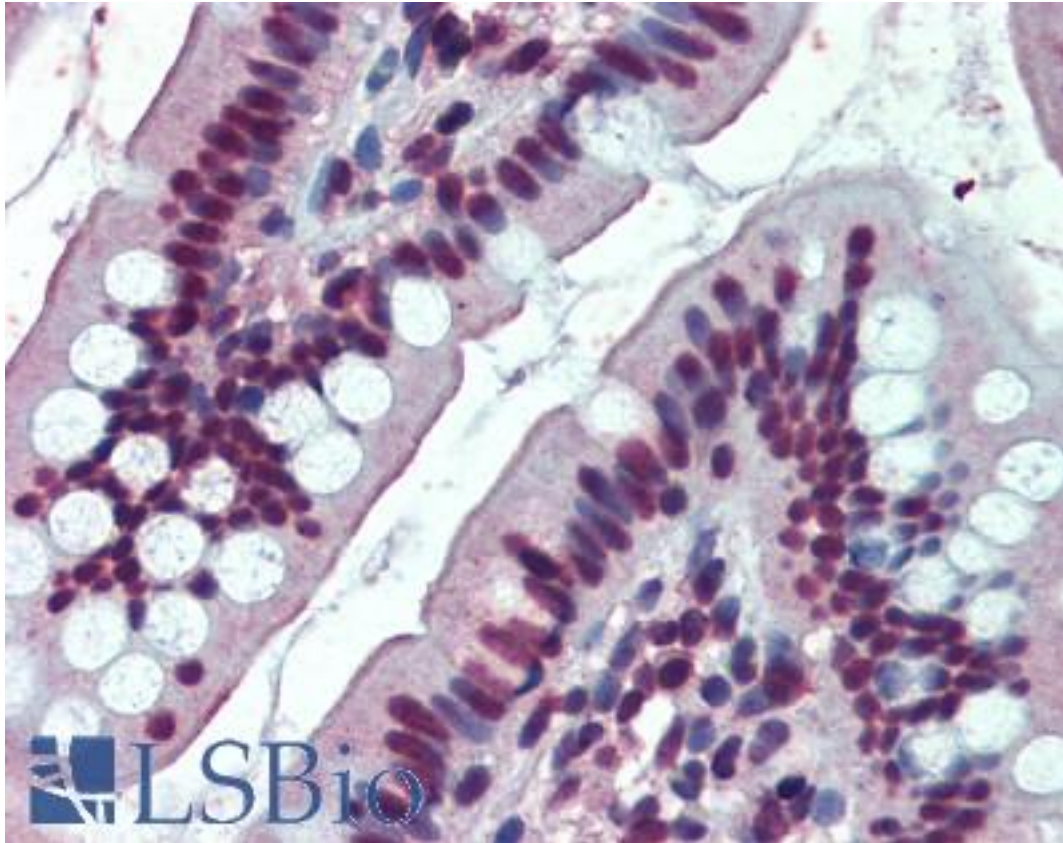


**EWSR1 / EWS Goat anti-Human Polyclonal (Internal) Antibody - LS-B3967 - LSBio**

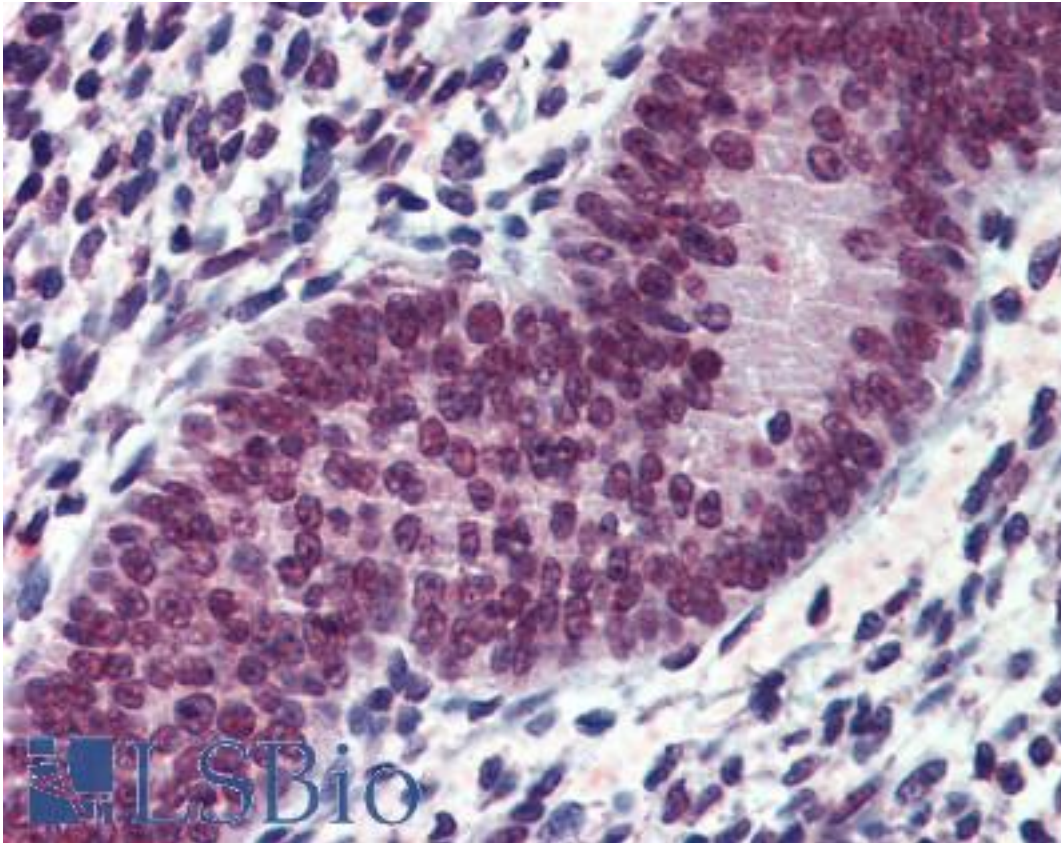
<b>CatalogID:</b>	LS-B3967
<b>Validation:</b>	This antibody replaces catalog number LS-C87399. It has been validated for use in the following assays: IHC-P.
<b>Target:</b>	EWS RNA-binding protein 1 (EWSR1)
<b>Synonyms:</b>	EWSR1 Antibody, EWS Antibody, RNA-binding protein EWS Antibody, BK984G1.4 Antibody, EWS oncogene Antibody
<b>Host</b>	EWSR1 antibody was produced in Goat
<b>Clonality:</b>	Polyclonal
<b>Immunogen Species:</b>	EWSR1 / EWS antibody was raised against Human
<b>Antigen Type:</b>	Synthetic peptide
<b>Immunogen:</b>	EWSR1 / EWS antibody was raised against synthetic peptide C-TSYDQSSYSQQNTYG from an internal region of human EWSR1 (NP_053733.2; NP_005234.1; NP_001156757.1; NP_001156758.1; NP_001156759.1). Percent identity by BLAST analysis: Human, Gorilla, Orangutan, Gibbon, Monkey, Mouse, Rat, Hamster, Elephant, Panda, Bovine, Dog, Bat, Pig, Opossum (100%); Platypus (93%); Turkey, Chicken (80%).
<b>Specificity:</b>	Human EWSR1. This antibody is expected to recognize all five reported isoforms (NP_053733.2; NP_005234.1; NP_001156757.1; NP_001156758.1; NP_001156759.1).
<b>Epitope:</b>	Internal
<b>Reactivity:</b>	Human, Gorilla, Orangutan, Gibbon, Monkey, Mouse, Rat, Bat, Bovine, Dog, Hamster, Pig
<b>Purification:</b>	Immunoaffinity purified
<b>Presentation:</b>	Tris-buffered saline, pH 7.3, 0.5% BSA, 0.02% sodium azide
<b>Recommended Storage:</b>	Store at -20°C. Minimize freezing and thawing.
<b>Usage Summary:</b>	Peptide ELISA: antibody detection limit dilution 1:16000. Western Blot: Approx. 90kD band observed in Nuclear lysates of cell line HeLa (calculated MW of 68.5kD according to NP_053733.1). The observed molecular weight corresponds to earlier findings with different antibodies from other commercial sources. Recommended concentration: 1-3 ug/ml.
<b>Uses:</b>	IHC - Paraffin (3.75 µg/ml), Western blot (1 - 3 µg/ml), ELISA (1:16000) (Optimal dilution to be determined by the researcher)
<b>Size:</b>	50 µg
<b>Concentration:</b>	0.5 mg/ml

**Immunohistochemistry Image:**



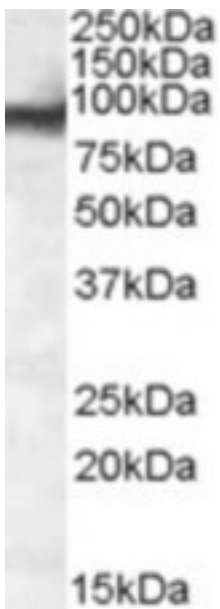
Anti-EWSR1 antibody IHC of human small intestine. Immunohistochemistry of formalin-fixed, paraffin-embedded tissue after heat-induced antigen retrieval. Antibody LS-B3967 concentration 3.75 ug/ml.

**Immunohistochemistry Image:**



Anti-EWSR1 antibody IHC of human uterus. Immunohistochemistry of formalin-fixed, paraffin-embedded tissue after heat-induced antigen retrieval. Antibody LS-B3967 concentration 3.75 ug/ml.

**Western Blot Image:**



Antibody (0.1 ug/ml) staining of nuclear HeLa lysate (35 ug protein in RIPA buffer). Primary incubation was 1 hour. Detected by chemiluminescence.

<b>Requested From:</b>	Japan
Laboratory Reagent For In Vitro Research Use Only	
Not for resale without prior written consent from LifeSpan BioSciences, Inc.	
Created on 9/23/2014	
© 2014 LifeSpan BioSciences	