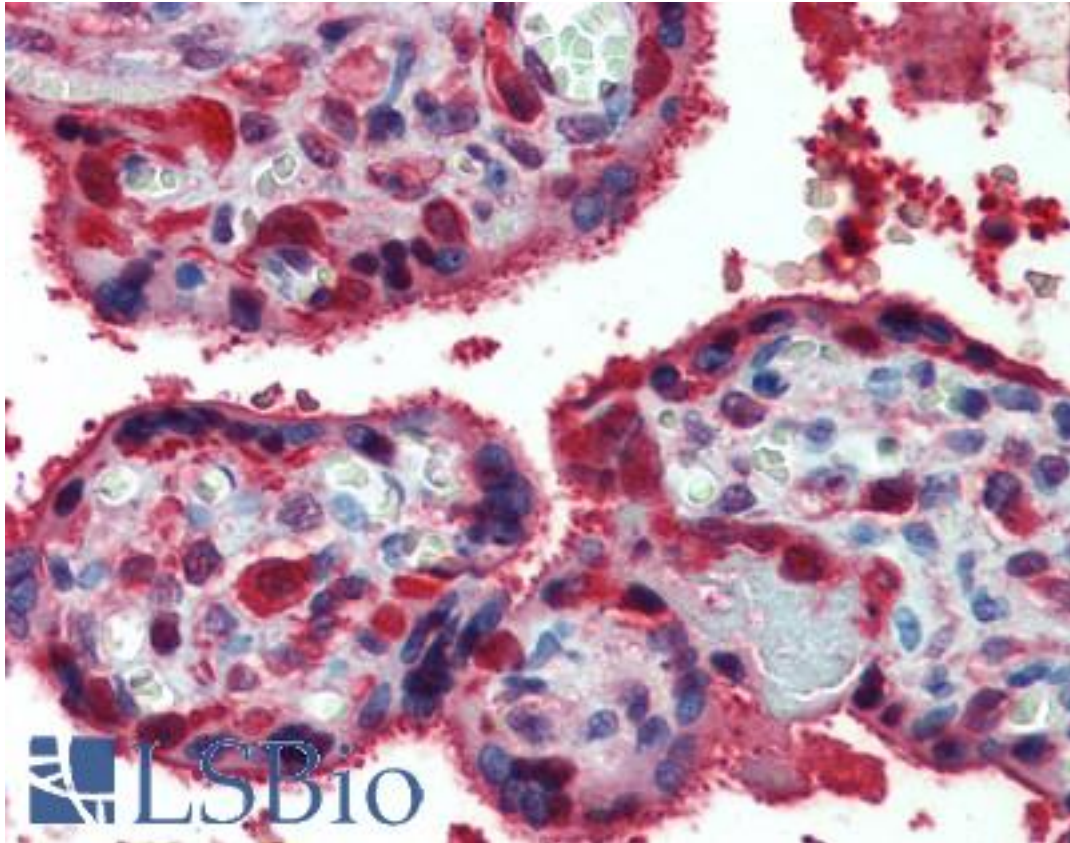


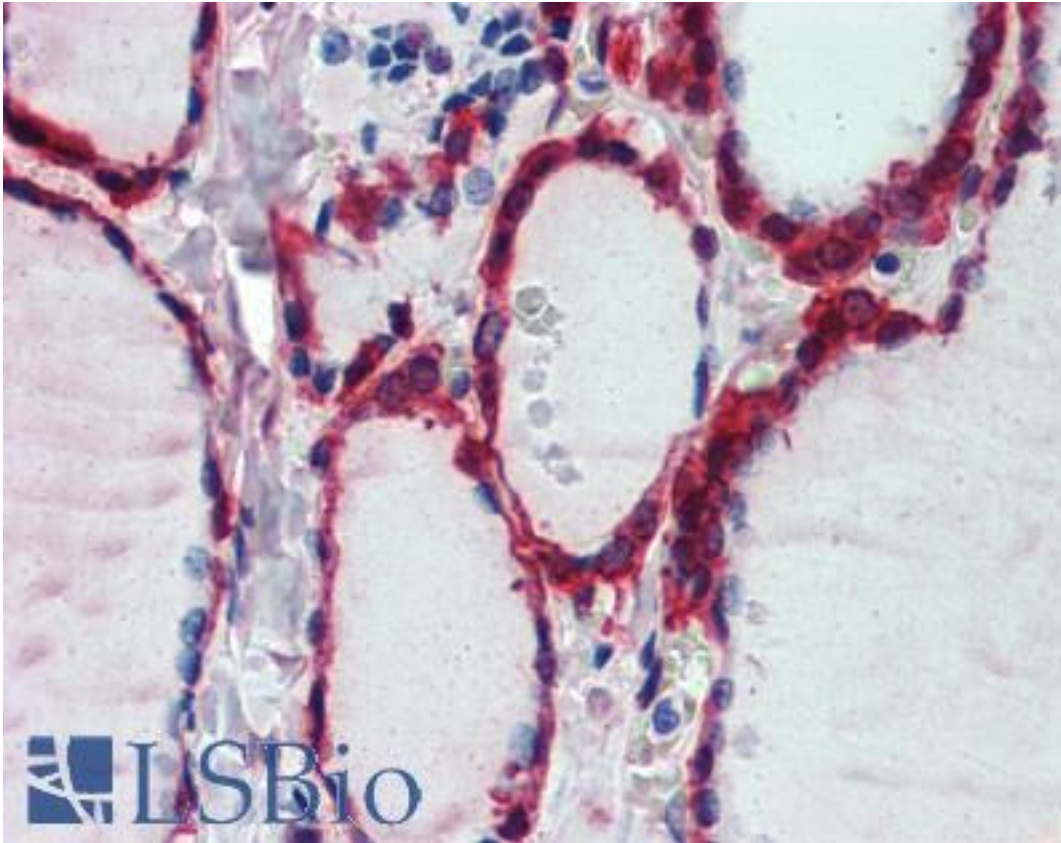
PRDX1 / Peroxiredoxin 1 Goat anti-Human Polyclonal (Internal) Antibody - LS-B3966 - LSBio	
<b>CatalogID:</b>	LS-B3966
<b>Validation:</b>	This antibody replaces catalog number LS-C87374. It has been validated for use in the following assays: IHC-P.
<b>Target:</b>	peroxiredoxin 1 (PRDX1)
<b>Synonyms:</b>	PRDX1 Antibody, MSP23 Antibody, PAGB Antibody, Peroxiredoxin-1 Antibody, PRX1 Antibody, NKEFA Antibody, Peroxiredoxin 1 Antibody, Thioredoxin peroxidase 2 Antibody, NKEF-A Antibody, PAG Antibody, PRXI Antibody, TDPX2 Antibody
<b>Host</b>	PRDX1 antibody was produced in Goat
<b>Clonality:</b>	Polyclonal
<b>Immunogen Species:</b>	PRDX1 / Peroxiredoxin 1 antibody was raised against Human
<b>Antigen Type:</b>	Synthetic peptide
<b>Immunogen:</b>	PRDX1 / Peroxiredoxin 1 antibody was raised against synthetic peptide C-SDPKRTIAQDYG from an internal region of human PRDX1 / Peroxiredoxin 1 (NP_859048.1). Percent identity by BLAST analysis: Human, Gibbon, Monkey, Marmoset, Mouse, Rat, Hamster, Elephant, Panda, Dog, Bovine, Bat, Horse, Rabbit, Pig (100%); Opossum (92%).
<b>Specificity:</b>	Human PRDX1 / Peroxiredoxin 1. Reported variants represent identical protein (NP_002565.1, NP_859047.1, NP_859048.1).
<b>Epitope:</b>	Internal
<b>Reactivity:</b>	Human, Gibbon, Monkey, Mouse, Rat, Bat, Bovine, Dog, Hamster, Horse, Pig, Rabbit
<b>Purification:</b>	Immunoaffinity purified
<b>Presentation:</b>	Tris-buffered saline, pH 7.3, 0.5% BSA, 0.02% sodium azide
<b>Recommended Storage:</b>	Store at -20°C. Minimize freezing and thawing.
<b>Usage Summary:</b>	Peptide ELISA: antibody detection limit dilution 1:32000. Western Blot: Approx. 23 to 24kD band observed in lysates of cell lines HEK293, A431 and HepG2 (calculated MW of 22.1kD according to NP_859048.1). Recommended concentration: 0.01-0.03 ug/ml.
<b>Uses:</b>	IHC - Paraffin (2.5 µg/ml), Western blot (0.01 - 0.03 µg/ml), ELISA (1:32000) (Optimal dilution to be determined by the researcher)
<b>Size:</b>	50 µg
<b>Concentration:</b>	0.5 mg/ml

**Immunohistochemistry Image:**



Anti-PRDX1 / Peroxiredoxin 1 antibody IHC of human placenta. Immunohistochemistry of formalin-fixed, paraffin-embedded tissue after heat-induced antigen retrieval. Antibody LS-B3966 concentration 2.5 ug/ml.

**Immunohistochemistry Image:**



Anti-PRDX1 / Peroxiredoxin 1 antibody IHC of human thyroid. Immunohistochemistry of formalin-fixed, paraffin-embedded tissue after heat-induced antigen retrieval. Antibody LS-B3966 concentration 2.5 ug/ml.

**Western Blot Image:**



Antibody (0.01 ug/ml) staining of HepG2 lysate (35 ug protein in RIPA buffer). Primary incubation was 1 hour. Detected by chemiluminescence.

<b>Requested From:</b>	Japan
Laboratory Reagent For In Vitro Research Use Only	
Not for resale without prior written consent from LifeSpan BioSciences, Inc.	
Created on 9/23/2014	
© 2014 LifeSpan BioSciences	