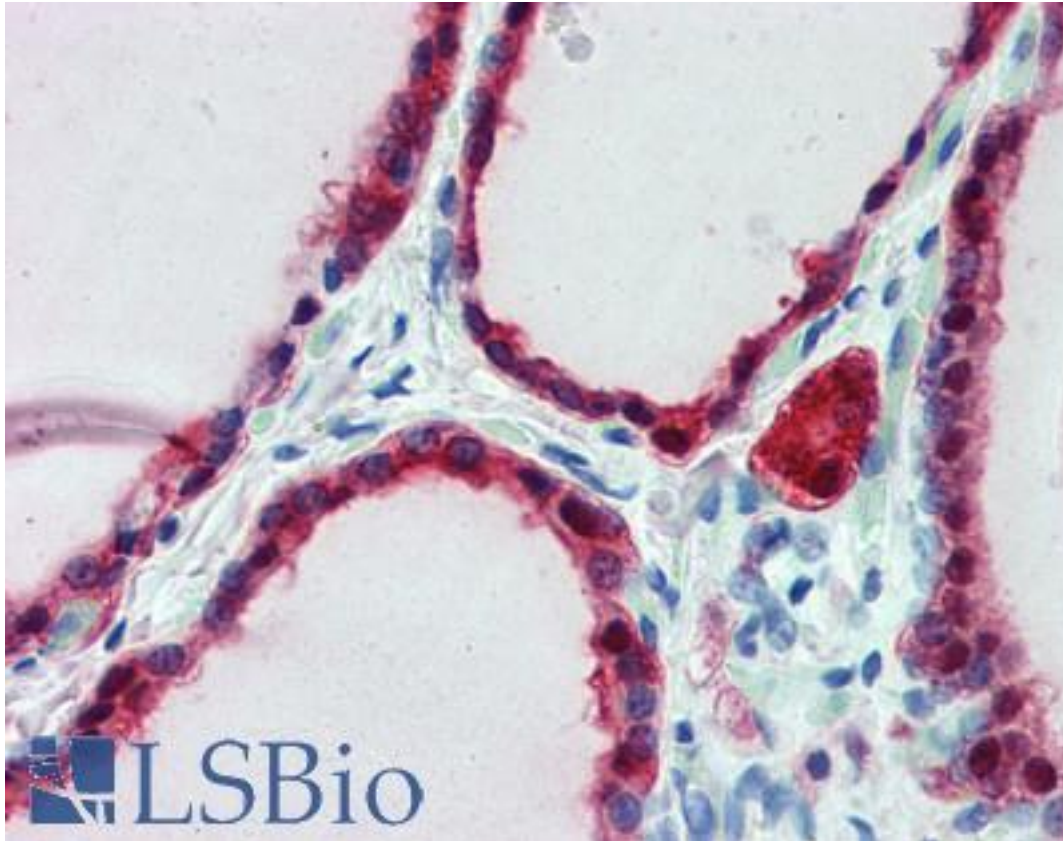


FSD2 / Frizzled 2 Goat anti-Human Polyclonal (Internal) Antibody - LS-B3963 - LSBio

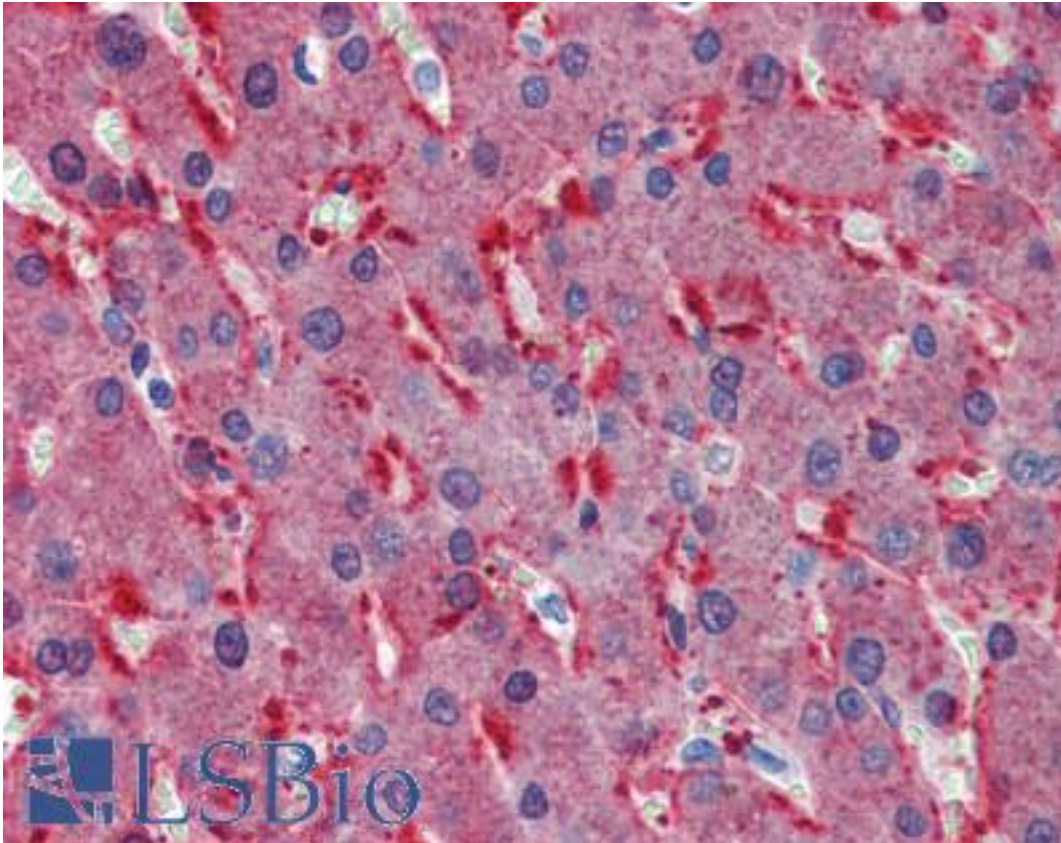
CatalogID:	LS-B3963
Validation:	This antibody replaces catalog number LS-C87241. It has been validated for use in the following assays: IHC-P.
Target:	frizzled class receptor 2 (FZD2)
Synonyms:	FZD2 Antibody, Dfrizzled2 Antibody, Fz2 Antibody, Frizzled family receptor 2 Antibody, Frizzled-2 Antibody, HFz2 Antibody, Frizzled homolog 2 Antibody, Fz-2 Antibody, FzE2 Antibody, Mfz10 Antibody, Rfz2 Antibody, Frizzled 2 Antibody
Family / Subfamily:	GPCR / Frizzled
Host	FZD2 antibody was produced in Goat
Clonality:	Polyclonal
Immunogen Species:	FSD2 / Frizzled 2 antibody was raised against Human
Antigen Type:	Synthetic peptide
Immunogen:	FSD2 / Frizzled 2 antibody was raised against synthetic peptide RYATLEHPFHCPFR from an internal region of human FZD2 / Frizzled 2 (NP_001457.1). Percent identity by BLAST analysis: Human, Monkey, Mouse, Rat, Hamster, Elephant, Dog, Bovine, Horse, Pig, Opossum (100%); Rabbit, Lizard (92%); Gorilla, Xenopus, Newt (85%).
Specificity:	Human FZD2 / Frizzled 2.
Epitope:	Internal
Reactivity:	Human, Monkey, Mouse, Rat, Bovine, Dog, Hamster, Horse, Pig
Predicted Reactivity:	Rabbit
Purification:	Immunoaffinity purified
Presentation:	Tris-buffered saline, pH 7.3, 0.5% BSA, 0.02% sodium azide
Recommended Storage:	Store at -20°C. Minimize freezing and thawing.
Usage Summary:	Peptide ELISA: antibody detection limit dilution 1:64000. Western Blot: Preliminary experiments gave an approx. 23kD band in Human Colon, Heart and Ovary lysates after 0.1 ug/ml antibody staining. Please note that currently we cannot find an explanation in the literature for the band we observe given the calculated size of 63.6kD according to NP_001457.1. The 23kD band was successfully blocked by incubation with the immunizing peptide. We would appreciate any feedback from people in the field - have any results been reported with other antibodies / lysates? Have any further splice variants / modified forms been reported?
Uses:	IHC - Paraffin (2.5 µg/ml), ELISA (1:64000) (Optimal dilution to be determined by the researcher)
Size:	50 µg
Concentration:	0.5 mg/ml

Immunohistochemistry Image:



Anti-Frizzled 2 antibody IHC of human thyroid. Immunohistochemistry of formalin-fixed, paraffin-embedded tissue after heat-induced antigen retrieval. Antibody LS-B3963 concentration 2.5 ug/ml.

Immunohistochemistry Image:



Anti-Frizzled 2 antibody IHC of human liver. Immunohistochemistry of formalin-fixed, paraffin-embedded tissue after heat-induced antigen retrieval. Antibody LS-B3963 concentration 2.5 ug/ml.

Requested From:

Japan

Laboratory Reagent For In Vitro Research Use Only

Not for resale without prior written consent from LifeSpan BioSciences, Inc.

Created on 9/23/2014

© 2014 LifeSpan BioSciences