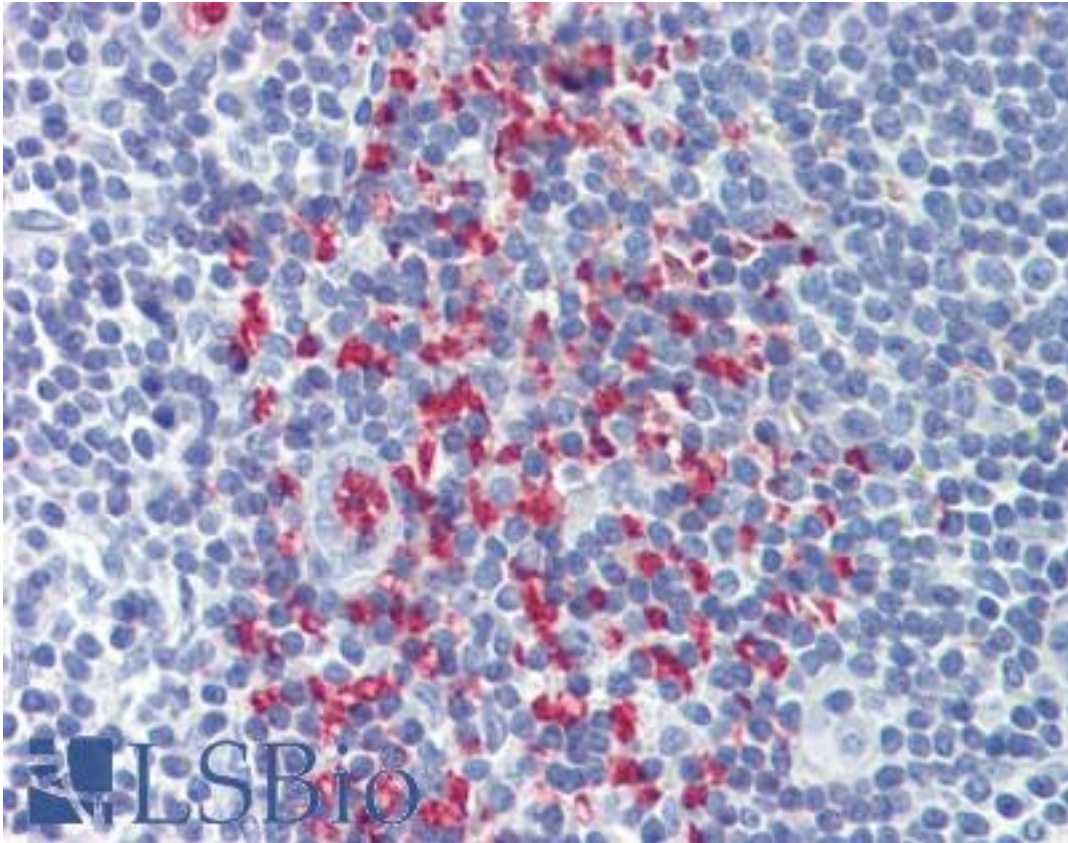


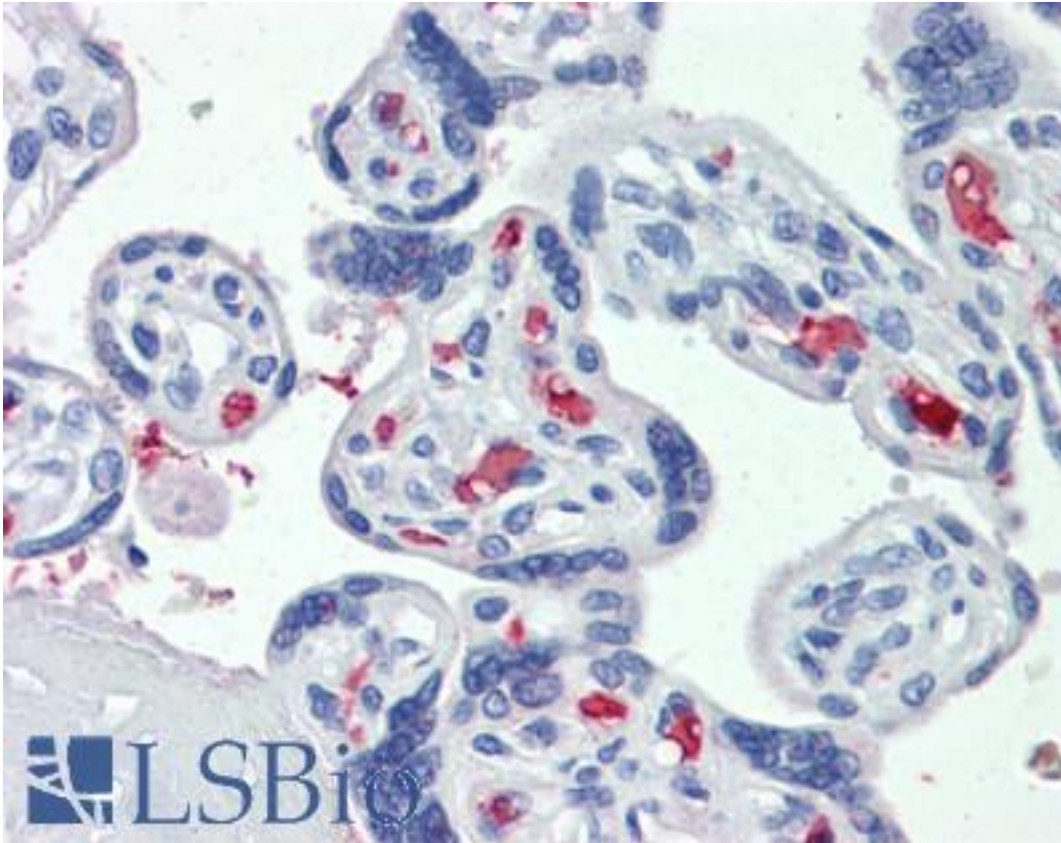
CLEC2D / OCIL / LLT1 Goat anti-Human Polyclonal (Internal) Antibody - LS-B3958 - LSBio	
CatalogID:	LS-B3958
Validation:	This antibody replaces catalog number LS-C109077. It has been validated for use in the following assays: IHC-P.
Target:	C-type lectin domain family 2, member D (CLEC2D)
Synonyms:	CLEC2D Antibody, C-type lectin related f Antibody, CLAX Antibody, LLT-1 Antibody, LLT1 Antibody, OCIL Antibody, Osteoclast inhibitory lectin Antibody, Lectin-like NK cell receptor Antibody, Lectin-like transcript 1 Antibody
Host	CLEC2D antibody was produced in Goat
Clonality:	Polyclonal
Immunogen Species:	CLEC2D / OCIL / LLT1 antibody was raised against Human
Antigen Type:	Synthetic peptide
Immunogen:	CLEC2D / OCIL / LLT1 antibody was raised against synthetic peptide (C-LLRYKGPSDH) from internal region of human CLEC2D. Percent identity by BLAST analysis: Human, Gorilla, Gibbon, Monkey, Horse (100%); Panda, Dog, Platypus (90%); Orangutan, Marmoset, Bovine, Pig (80%).
Specificity:	Human CLEC2D.
Epitope:	Internal
Reactivity:	Human, Gorilla, Gibbon, Monkey, Horse
Predicted Reactivity:	Dog
Purification:	Immunoaffinity purified
Presentation:	Tris-buffered saline, pH 7.3, 0.5% BSA, 0.02% sodium azide
Recommended Storage:	Store at -20°C. Minimize freezing and thawing.
Usage Summary:	Immunohistochemistry: LS-B3958 was validated for use in immunohistochemistry on a panel of 21 formalin-fixed, paraffin-embedded (FFPE) human tissues after heat induced antigen retrieval in pH 6.0 citrate buffer. After incubation with the primary antibody, slides were incubated with biotinylated secondary antibody, followed by alkaline phosphatase-streptavidin and chromogen. The stained slides were evaluated by a pathologist to confirm staining specificity. The optimal working concentration for LS-B3958 was determined to be 3.75 ug/ml.
Uses:	IHC - Paraffin (3.75 µg/ml), ELISA (1:16000) (Optimal dilution to be determined by the researcher)
Size:	50 µg
Concentration:	0.5 mg/ml

Immunohistochemistry Image:



Anti-CLEC2D antibody IHC of human tonsil. Immunohistochemistry of formalin-fixed, paraffin-embedded tissue after heat-induced antigen retrieval. Antibody LS-B3958 concentration 3.75 ug/ml.

Immunohistochemistry Image:



Anti-CLEC2D antibody IHC of human placenta. Immunohistochemistry of formalin-fixed, paraffin-embedded tissue after heat-induced antigen retrieval. Antibody LS-B3958 concentration 3.75 ug/ml.

Requested From:

Japan

Laboratory Reagent For In Vitro Research Use Only

Not for resale without prior written consent from LifeSpan BioSciences, Inc.

Created on 9/23/2014

© 2014 LifeSpan BioSciences