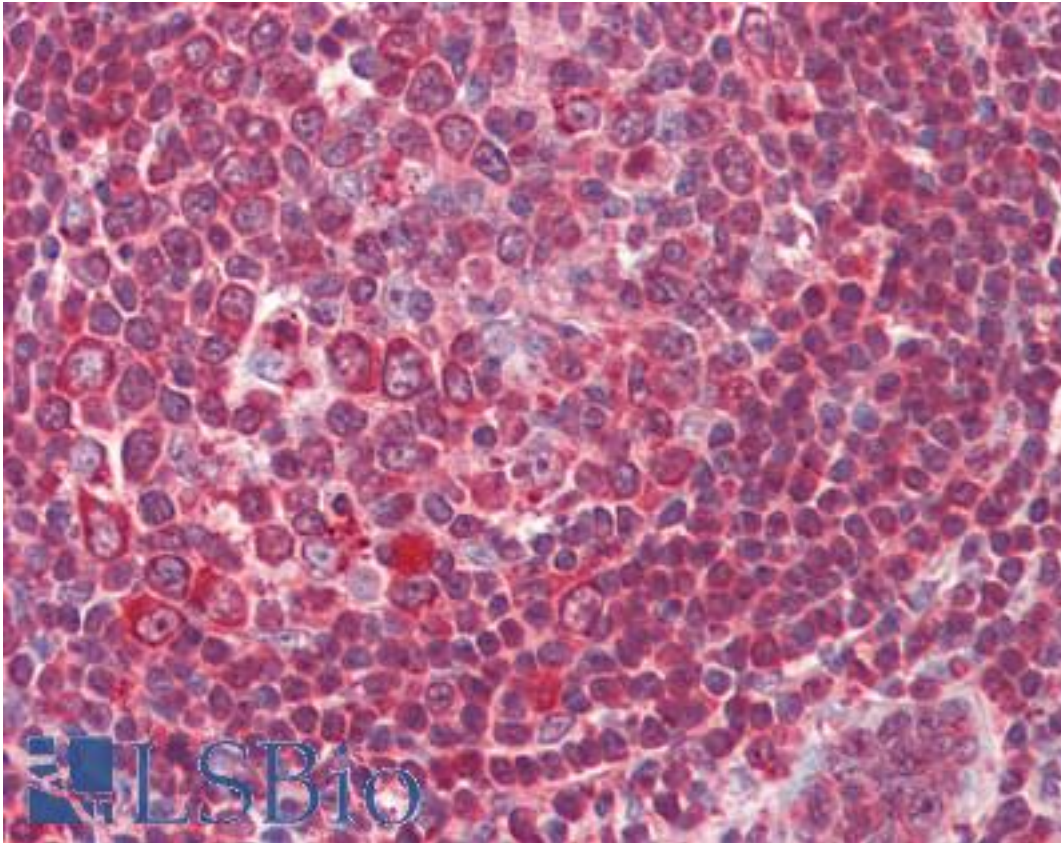


ERCC1 Goat anti-Human Polyclonal (Internal) Antibody - LS-B3956 - LSBio	
CatalogID:	LS-B3956
Validation:	This antibody replaces catalog number LS-C109075. It has been validated for use in the following assays: IHC-P.
Target:	excision repair cross-complementing rodent repair deficiency, complementation group 1 (includes overlapping antisense sequence) (ERCC1)
Synonyms:	ERCC1 Antibody, COFS4 Antibody, UV20 Antibody, RAD10 Antibody
Host	ERCC1 antibody was produced in Goat
Clonality:	Polyclonal
Immunogen Species:	ERCC1 antibody was raised against Human
Antigen Type:	Synthetic peptide
Immunogen:	ERCC1 antibody was raised against synthetic peptide (C-QVDVKDPQQALKE) from internal region of human ERCC1. Percent identity by BLAST analysis: Human, Chimpanzee, Gorilla, Gibbon, Monkey, Marmoset, Mouse, Rat, Elephant, Panda, Dog, Bat, Bovine (100%); Horse (92%); Hamster, Pig, Opossum, Platypus, Xenopus, Zebrafish (85%).
Specificity:	Human ERCC1.
Epitope:	Internal
Reactivity:	Human, Chimpanzee, Gorilla, Gibbon, Monkey, Mouse, Rat, Bat, Bovine, Dog
Predicted Reactivity:	Horse
Purification:	Immunoaffinity purified
Presentation:	Tris-buffered saline, pH 7.3, 0.5% BSA, 0.02% sodium azide
Recommended Storage:	Store at -20°C. Minimize freezing and thawing.
Usage Summary:	Immunohistochemistry: LS-B3956 was validated for use in immunohistochemistry on a panel of 21 formalin-fixed, paraffin-embedded (FFPE) human tissues after heat induced antigen retrieval in pH 6.0 citrate buffer. After incubation with the primary antibody, slides were incubated with biotinylated secondary antibody, followed by alkaline phosphatase-streptavidin and chromogen. The stained slides were evaluated by a pathologist to confirm staining specificity. The optimal working concentration for LS-B3956 was determined to be 3.75 ug/ml.
Uses:	IHC - Paraffin (3.75 µg/ml), ELISA (1:1000) (Optimal dilution to be determined by the researcher)
Size:	50 µg
Concentration:	0.5 mg/ml

Immunohistochemistry Image:



Anti-ERCC1 antibody IHC of human tonsil. Immunohistochemistry of formalin-fixed, paraffin-embedded tissue after heat-induced antigen retrieval. Antibody LS-B3956 concentration 3.75 ug/ml.

Requested From:

Japan

Laboratory Reagent For In Vitro Research Use Only

Not for resale without prior written consent from LifeSpan BioSciences, Inc.

Created on 9/23/2014

© 2014 LifeSpan BioSciences