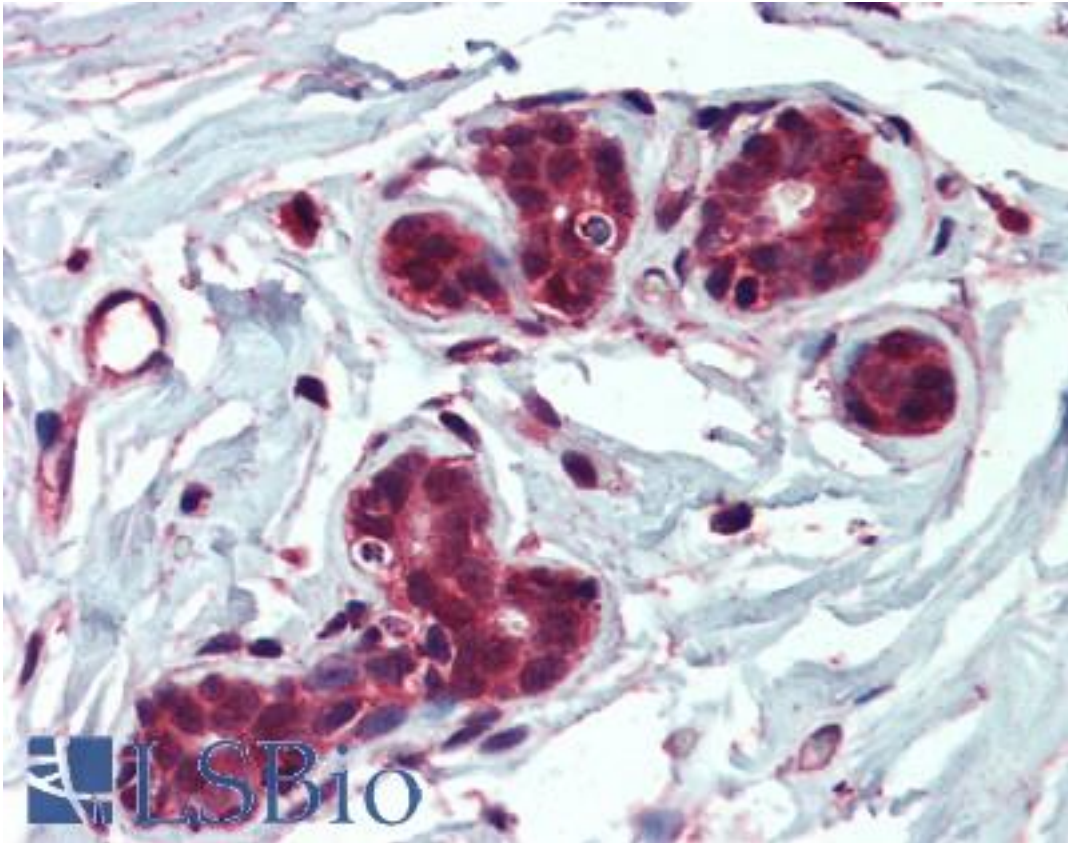


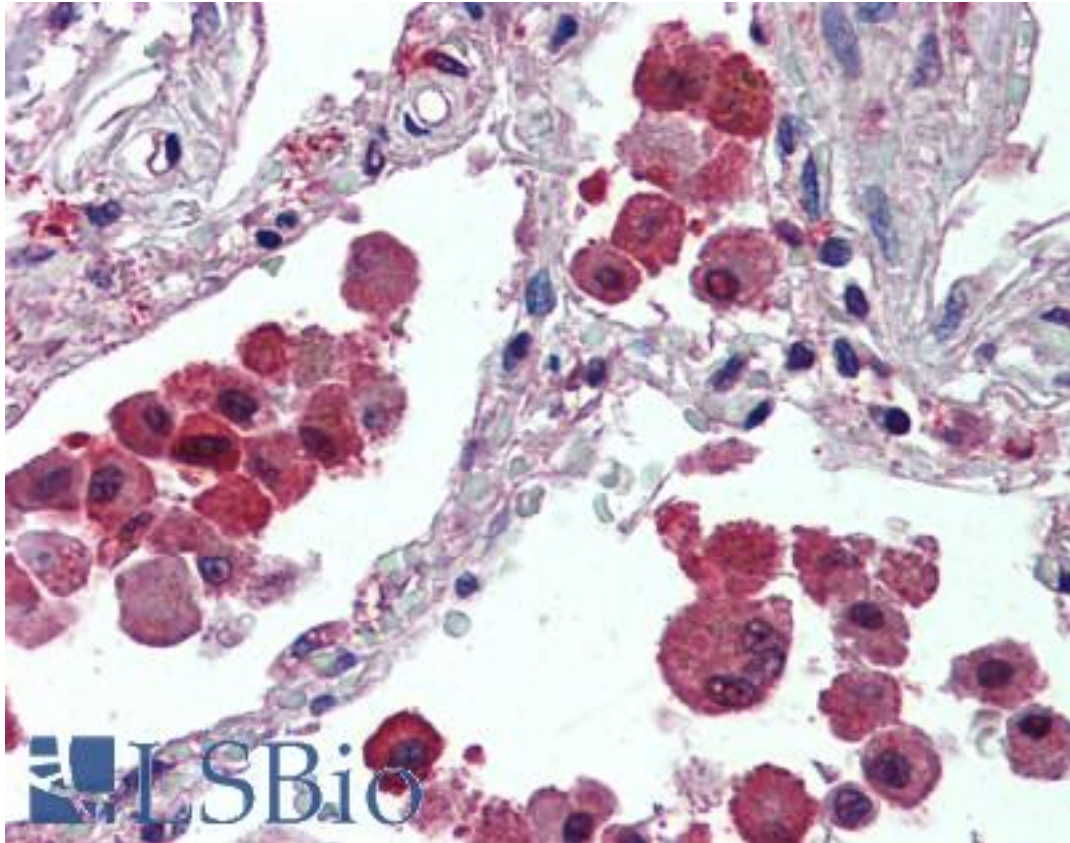
IDE Goat anti-Human Polyclonal (Internal) Antibody - LS-B3954 - LSBio	
CatalogID:	LS-B3954
Validation:	This antibody replaces catalog number LS-C55007. It has been validated for use in the following assays: IHC-P.
Target:	insulin-degrading enzyme (IDE)
Synonyms:	IDE Antibody, Abeta-degrading protease Antibody, Insulinase Antibody, INSULYSIN Antibody, Insulin protease Antibody, Insulin-degrading enzyme Antibody
Family / Subfamily:	Protease / Metallopeptidase M16
Host	IDE antibody was produced in Goat
Clonality:	Polyclonal
Immunogen Species:	IDE antibody was raised against Human
Antigen Type:	Synthetic peptide
Immunogen:	IDE antibody was raised against synthetic peptide C-QQYNFDRDNTTE from an internal region of human IDE (NP_004960.1, NP_001159418.1). Percent identity by BLAST analysis: Human, Gorilla, Gibbon, Marmoset, Elephant, Panda, Dog, Bat, Horse, Opossum, Platypus (100%); Monkey, Bovine, Rabbit, Pig, Chicken, Xenopus, Zebrafish (91%); Mouse, Rat, Hamster, Sea anemone, Ant, Trichoplax (82%).
Specificity:	Human IDE. This antibody is expected to recognize both reported isoforms (NP_004960.1 and NP_001159418.1).
Epitope:	Internal
Reactivity:	Human, Gorilla, Gibbon, Bat, Dog, Horse
Predicted Reactivity:	Monkey, Bovine, Pig, Rabbit, Chicken, Xenopus, Zebrafish
Purification:	Immunoaffinity purified
Presentation:	Tris-buffered saline, pH 7.3, 0.5% BSA, 0.02% sodium azide
Recommended Storage:	Store at -20°C. Minimize freezing and thawing.
Uses:	IHC - Paraffin (2.5 µg/ml), Western blot (0.1 - 0.3 µg/ml), ELISA (1:32000) (Optimal dilution to be determined by the researcher)
Size:	50 µg
Concentration:	0.5 mg/ml

Immunohistochemistry Image:



Anti-IDE antibody IHC of human breast. Immunohistochemistry of formalin-fixed, paraffin-embedded tissue after heat-induced antigen retrieval. Antibody LS-B3954 concentration 2.5 ug/ml.

Immunohistochemistry Image:



Anti-IDE antibody IHC of human lung. Immunohistochemistry of formalin-fixed, paraffin-embedded tissue after heat-induced antigen retrieval. Antibody LS-B3954 concentration 2.5 ug/ml.

Western Blot Image:



Antibody (0.1 ug/ml) staining of K562 cell lysate (35 ug protein in RIPA buffer). Primary incubation was 1 hour. Detected by chemiluminescence.

Requested From:

Japan

Laboratory Reagent For In Vitro Research Use Only

Not for resale without prior written consent from LifeSpan BioSciences, Inc.

Created on 9/23/2014

© 2014 LifeSpan BioSciences