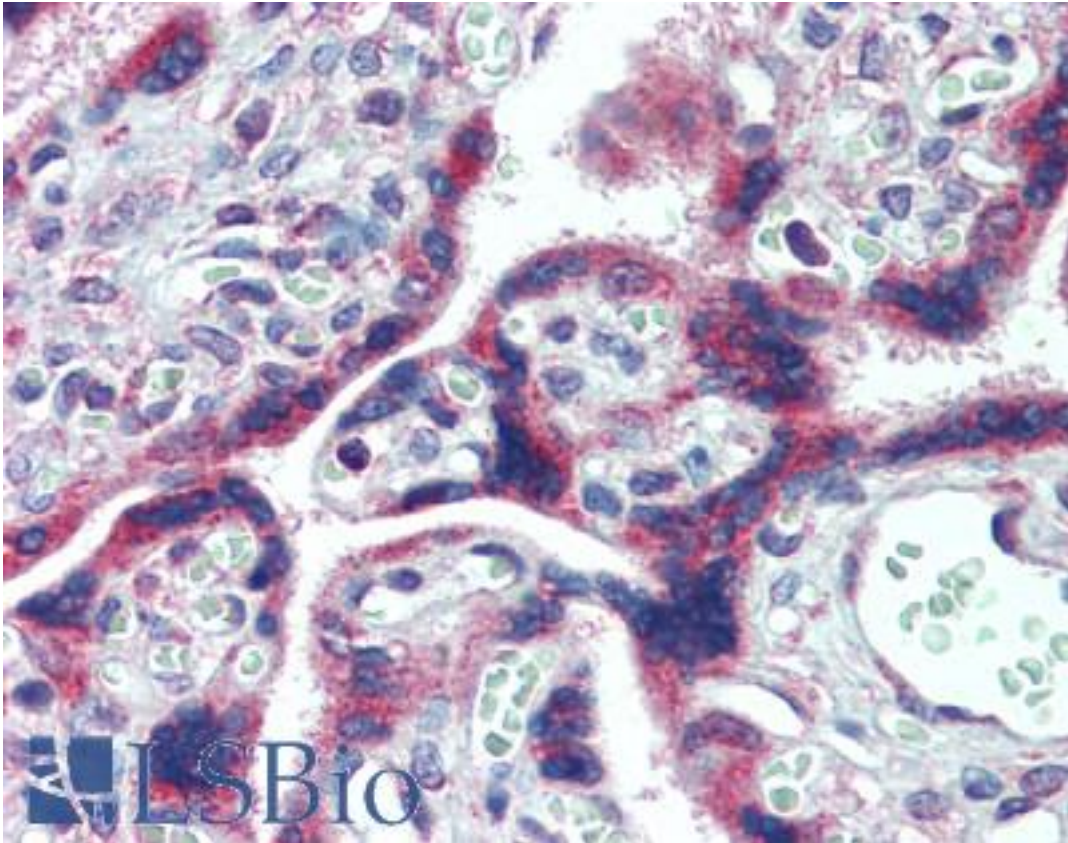


FMR1 / FMRP Goat anti-Human Polyclonal (C-Terminus) Antibody - LS-B3953 - LSBio	
CatalogID:	LS-B3953
Validation:	This antibody replaces catalog number LS-C87208. It has been validated for use in the following assays: IHC-P.
Target:	fragile X mental retardation 1 (FMR1)
Synonyms:	FMR1 Antibody, FMRP Antibody, POF Antibody, Protein FMR-1 Antibody, Premature ovarian failure 1 Antibody, Fragile X mental retardation 1 Antibody, FRAXA Antibody, POF1 Antibody
Host	FMR1 antibody was produced in Goat
Clonality:	Polyclonal
Immunogen Species:	FMR1 / FMRP antibody was raised against Human
Antigen Type:	Synthetic peptide
Immunogen:	FMR1 / FMRP antibody was raised against synthetic peptide C-RTGKDRNQQKKEKPD from an internal region (near the C-terminus) of human FMR1 (NP_002015.1). Percent identity by BLAST analysis: Human, Gorilla, Gibbon, Monkey, Marmoset, Mouse, Rat, Hamster, Elephant, Panda, Bat, Rabbit, Pig (100%); Orangutan, Bovine (93%); Opossum, Turkey, Chicken, Platypus, Xenopus (86%).
Specificity:	Human FMR1.
Epitope:	C-Terminus
Reactivity:	Human, Gorilla, Gibbon, Monkey, Mouse, Rat, Bat, Hamster, Pig, Rabbit
Predicted Reactivity:	Orangutan, Bovine
Purification:	Immunoaffinity purified
Presentation:	Tris-buffered saline, pH 7.3, 0.5% BSA, 0.02% sodium azide
Recommended Storage:	Store at -20°C. Minimize freezing and thawing.
Usage Summary:	Peptide ELISA: antibody detection limit dilution 1:128000. Western Blot: Approx 80kD band observed in lysates of cell line KELLY (calculated MW of 71.2kD according to NP_002015.1). The observed molecular weight corresponds to earlier findings in literature with different antibodies (Sittler et al, Hum Mol Genet. 1996 Jan;5(1):95-102; PMID: 8789445). Recommended concentration: 0.1-0.3 ug/ml.
Uses:	IHC - Paraffin (2.5 µg/ml), Western blot (0.1 - 0.3 µg/ml), ELISA (1:128000) (Optimal dilution to be determined by the researcher)
Size:	50 µg
Concentration:	0.5 mg/ml

Immunohistochemistry Image:



Anti-FMR1 antibody IHC of human placenta. Immunohistochemistry of formalin-fixed, paraffin-embedded tissue after heat-induced antigen retrieval. Antibody LS-B3953 concentration 2.5 ug/ml.

Western Blot Image:



Antibody (0.1 ug/ml) staining of KELLY cell lysate (35 ug protein in RIPA buffer). Primary incubation was 1 hour. Detected by chemiluminescence.

Requested From:

Japan

Laboratory Reagent For In Vitro Research Use Only

Not for resale without prior written consent from LifeSpan BioSciences, Inc.

Created on 9/23/2014

© 2014 LifeSpan BioSciences