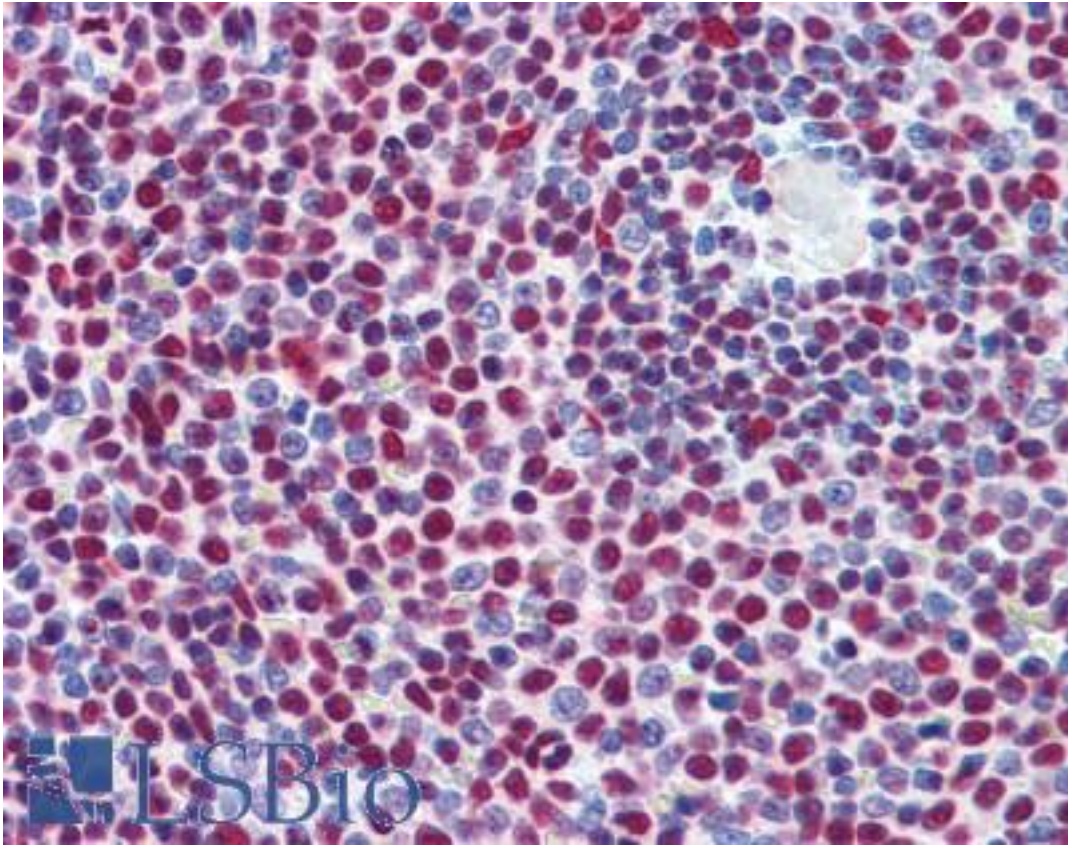


**NF45 / ILF2 Goat anti-Human Polyclonal (Internal) Antibody - LS-B3952 - LSBio**

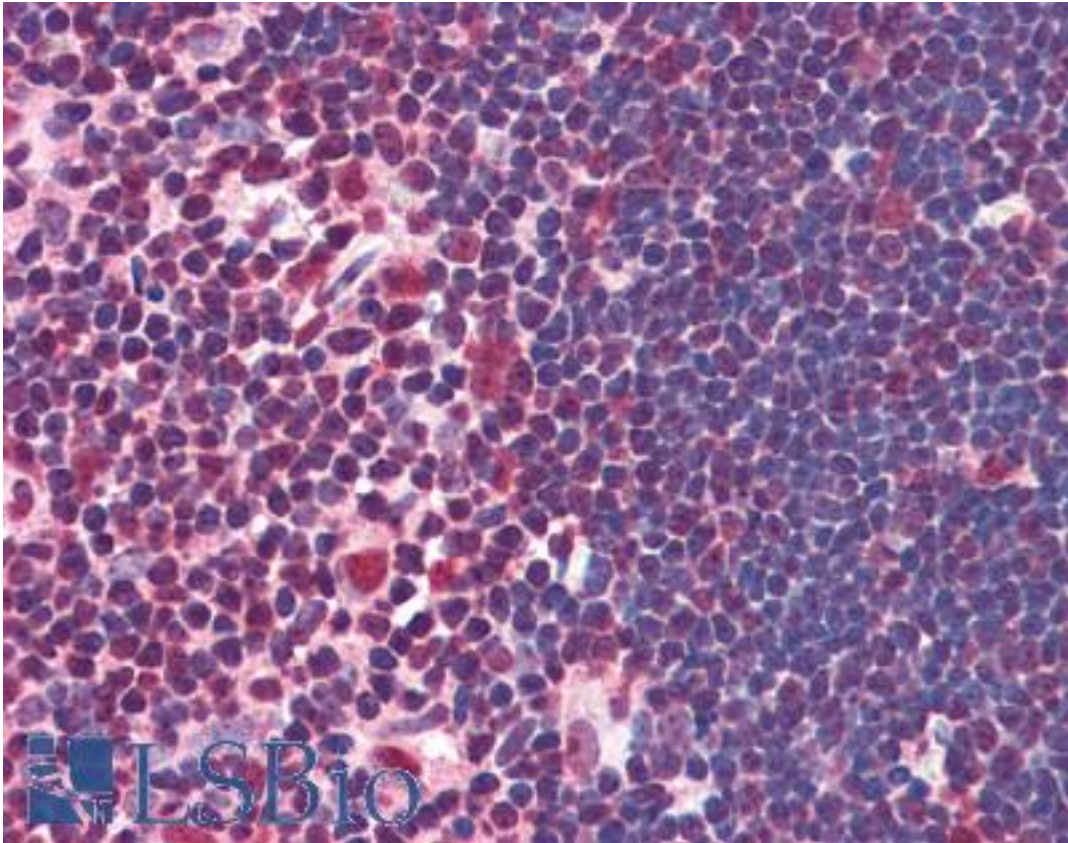
|                              |  |
|------------------------------|--|
| <b>CatalogID:</b>            | LS-B3952   |
| <b>Validation:</b>           | This antibody replaces catalog number LS-C61756. It has been validated for use in the following assays: IHC-P.   |
| <b>Target:</b>               | interleukin enhancer binding factor 2 (ILF2)   |
| <b>Synonyms:</b>             | ILF2 Antibody, PRO3063 Antibody, NF45 Antibody   |
| <b>Host</b>                  | ILF2 antibody was produced in Goat   |
| <b>Clonality:</b>            | Polyclonal   |
| <b>Immunogen Species:</b>    | NF45 / ILF2 antibody was raised against Human  |
| <b>Antigen Type:</b>         | Synthetic peptide  |
| <b>Immunogen:</b>            | NF45 / ILF2 antibody was raised against synthetic peptide C-EKAYEKPPPEKKEG from an internal region (near the C-terminus) of human ILF2 (NP_004506.2). Percent identity by BLAST analysis: Human, Orangutan, Monkey, Marmoset, Mouse, Rat, Elephant, Panda, Dog, Bovine, Horse, Rabbit, Pig, Opossum (100%); Xenopus (92%); Salmon, Stickleback, Pufferfish, Zebrafish, Beetle (85%). |
| <b>Specificity:</b>          | Human ILF2.  |
| <b>Epitope:</b>              | Internal   |
| <b>Reactivity:</b>           | Human, Orangutan, Monkey, Mouse, Rat, Bovine, Dog, Horse, Pig, Rabbit  |
| <b>Predicted Reactivity:</b> | Xenopus  |
| <b>Purification:</b>         | Immunoaffinity purified  |
| <b>Presentation:</b>         | Tris-buffered saline, pH 7.3, 0.5% BSA, 0.02% sodium azide   |
| <b>Recommended Storage:</b>  | Store at -20°C. Minimize freezing and thawing.   |
| <b>Uses:</b>                 | IHC - Paraffin (2.5 µg/ml), Western blot (0.03 - 0.1 µg/ml), ELISA (1:4000) (Optimal dilution to be determined by the researcher)  |
| <b>Size:</b>                 | 50 µg  |
| <b>Concentration:</b>        | 0.5 mg/ml  |

**Immunohistochemistry Image:**



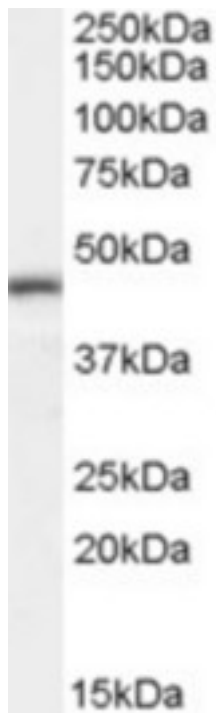
Anti-ILF2 antibody IHC of human spleen. Immunohistochemistry of formalin-fixed, paraffin-embedded tissue after heat-induced antigen retrieval. Antibody LS-B3952 concentration 2.5 ug/ml.

**Immunohistochemistry Image:**



Anti-ILF2 antibody IHC of human thymus. Immunohistochemistry of formalin-fixed, paraffin-embedded tissue after heat-induced antigen retrieval. Antibody LS-B3952 concentration 2.5 ug/ml.

**Western Blot Image:**



Antibody (0.3 ug/ml) staining of Human Tonsil lysate (35 ug protein in RIPA buffer). Primary incubation was 1 hour. Detected by chemiluminescence.

**Requested From:**

Japan

Laboratory Reagent For In Vitro Research Use Only

Not for resale without prior written consent from LifeSpan BioSciences, Inc.

Created on 9/23/2014

© 2014 LifeSpan BioSciences