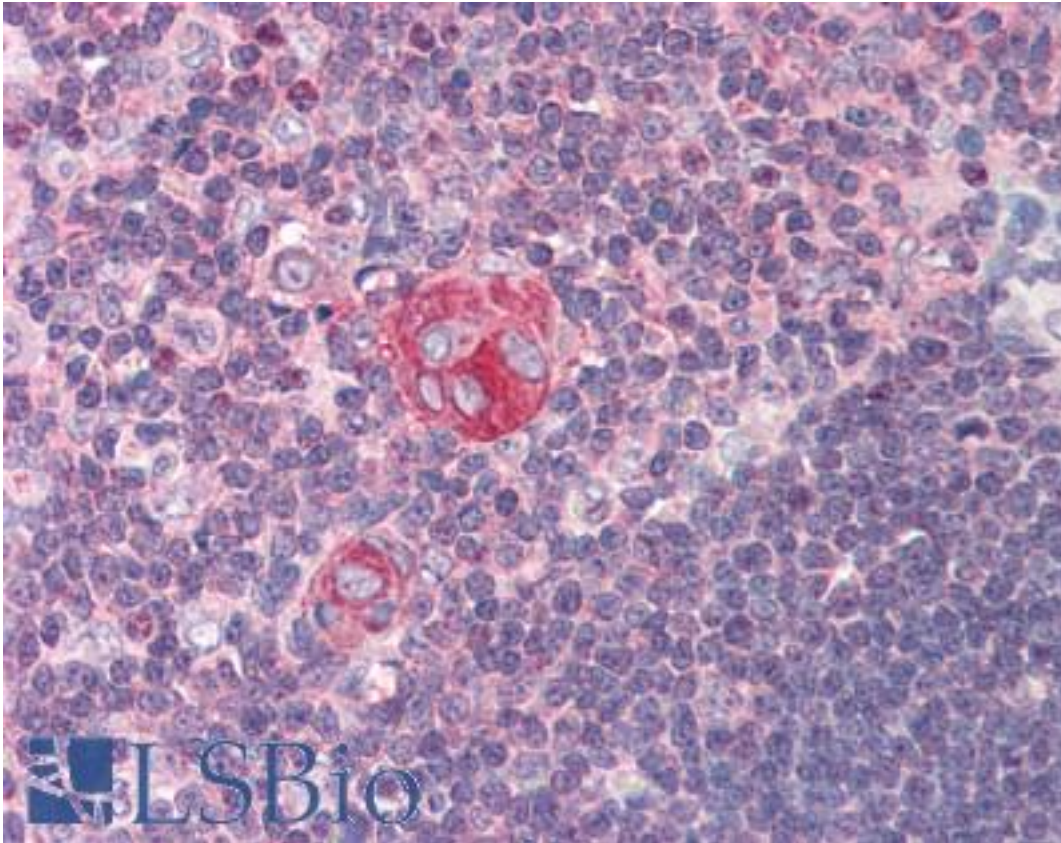


NFKB1 Rabbit anti-Human Polyclonal (N-Terminus) Antibody - LS-B395 - LSBio	
CatalogID:	LS-B395
Validation:	This antibody replaces catalog number LS-C18852. It has been validated for use in the following assays: IHC.
Target:	nuclear factor of kappa light polypeptide gene enhancer in B-cells 1 (NFKB1)
Synonyms:	NFKB1 Antibody, Ebp- 1 Antibody, EBP-1 Antibody, NF-KappaB p50 Antibody, NFkappaB Antibody, NFKB-p50 Antibody, KBF1 Antibody, NF-kappa-B Antibody, NF-kappaB Antibody, NF-kB1 Antibody, NFKB-p105 Antibody, p105 Antibody, p50 Antibody, DNA binding factor KBF1 Antibody, DNA-binding factor KBF1 Antibody, NF-kappabeta Antibody
Family / Subfamily:	Apoptosis / not assigned-Other
Host	NFKB1 antibody was produced in Rabbit
Clonality:	Polyclonal
Immunogen Species:	NFKB1 antibody was raised against Human
Specificity:	Human NFkB p105 peptide corresponding to a region near the N-terminus of the human protein conjugated to Keyhole Limpet Hemocyanin (KLH).
Epitope:	N-Terminus
Reactivity:	Human
Purification:	Delipidated and defibrinated
Presentation:	Contains 0.01% sodium azide
Recommended Storage:	Long term: -20°C; Short term: +4°C. Avoid repeat freeze-thaw cycles.
Usage Summary:	Immunohistochemistry: LS-B395 was validated for use in immunohistochemistry on a panel of 21 formalin-fixed, paraffin-embedded (FFPE) human tissues after heat induced antigen retrieval in pH 6.0 citrate buffer. After incubation with the primary antibody, slides were incubated with biotinylated secondary antibody, followed by alkaline phosphatase-streptavidin and chromogen. The stained slides were evaluated by a pathologist to confirm staining specificity. The optimal working concentration for LS-B395 was determined to be 1:500.
Uses:	IHC - Paraffin (1:500), Immunofluorescence, Western blot, Immunoprecipitation, ELISA (Optimal dilution to be determined by the researcher)
Size:	50 µl
Concentration:	90 mg/ml

Immunohistochemistry Image:



Anti-NFKB1 antibody IHC of human thymus. Immunohistochemistry of formalin-fixed, paraffin-embedded tissue after heat-induced antigen retrieval. Antibody LS-B395 dilution 1:500.

Requested From:

Japan

Laboratory Reagent For In Vitro Research Use Only

Not for resale without prior written consent from LifeSpan BioSciences, Inc.

Created on 9/23/2014

© 2014 LifeSpan BioSciences