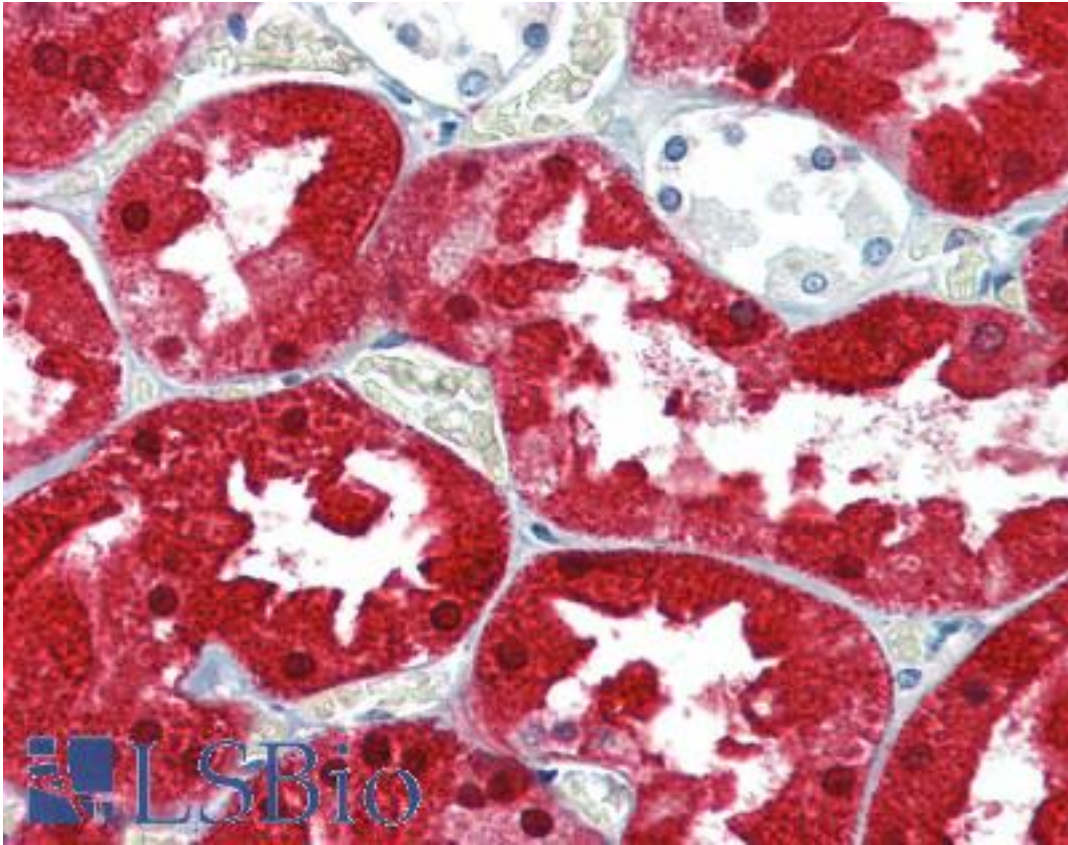


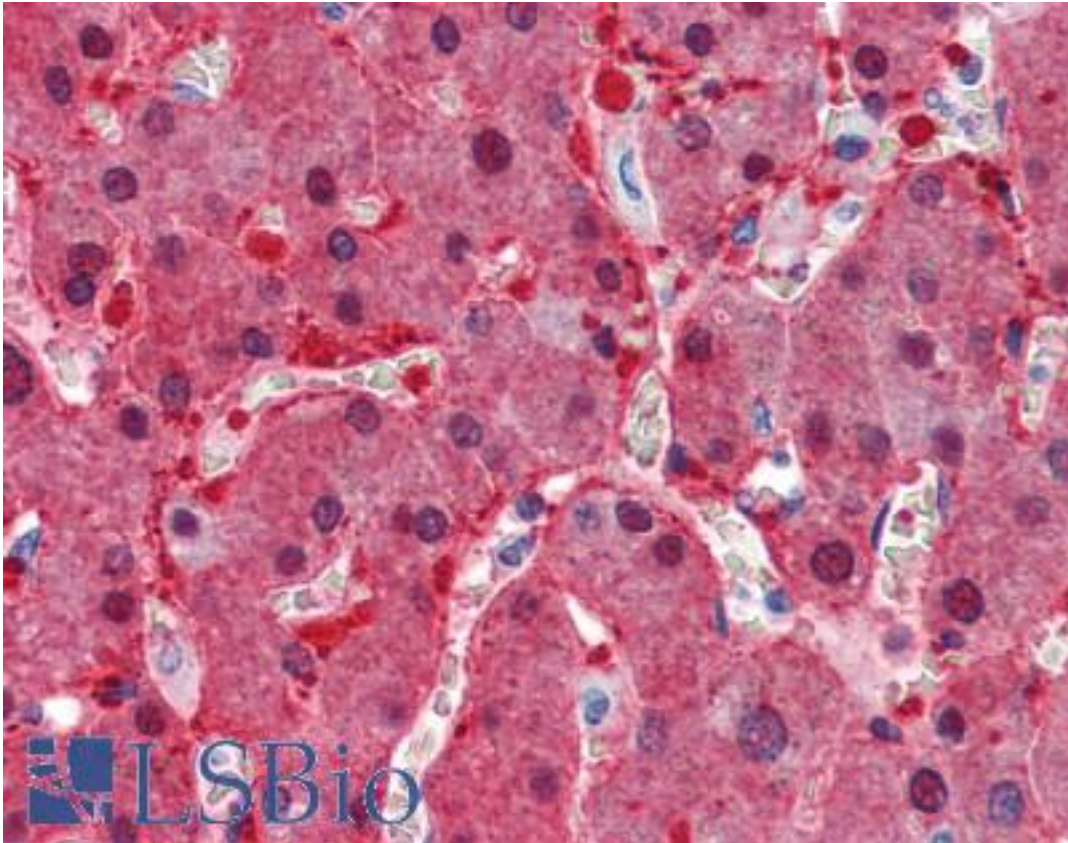
ASS1 / ASS Goat anti-Human Polyclonal (Internal) Antibody - LS-B3948 - LSBio	
CatalogID:	LS-B3948
Validation:	This antibody replaces catalog number LS-C61705. It has been validated for use in the following assays: IHC-P.
Target:	argininosuccinate synthase 1 (ASS1)
Synonyms:	ASS1 Antibody, Argininosuccinate synthetase Antibody, ASS Antibody, Argininosuccinate synthase 1 Antibody, CTLN1 Antibody, Citrulline--aspartate ligase Antibody, Citrulline-aspartate ligase Antibody, Argininosuccinate synthase Antibody, Argininosuccinate synthetase 1 Antibody
Host	ASS1 antibody was produced in Goat
Clonality:	Polyclonal
Immunogen Species:	ASS1 / ASS antibody was raised against Human
Antigen Type:	Synthetic peptide
Immunogen:	ASS1 / ASS antibody was raised against synthetic peptide C-ENPKNQAPPGLYTKTQD from an internal region of human ASS1 (NP_000041.2 ; NP_446464.1). Percent identity by BLAST analysis: Human, Gorilla, Orangutan, Gibbon, Monkey, Marmoset, Mouse, Rat, Elephant, Panda, Dog, Bat, Bovine, Horse, Pig, Opossum (100%); Rabbit (94%); Xenopus (82%).
Specificity:	Human ASS1. The variants represent identical protein (NP_000041.2 and NP_446464.1).
Epitope:	Internal
Reactivity:	Human, Gorilla, Orangutan, Gibbon, Monkey, Mouse, Rat, Bat, Bovine, Dog, Horse, Pig
Predicted Reactivity:	Rabbit
Purification:	Immunoaffinity purified
Presentation:	Tris-buffered saline, pH 7.3, 0.5% BSA, 0.02% sodium azide
Recommended Storage:	Store at -20°C. Minimize freezing and thawing.
Uses:	IHC - Paraffin (2.5 µg/ml), Western blot (0.01 - 0.03 µg/ml), Immunoprecipitation, ELISA (1:64000) (Optimal dilution to be determined by the researcher)
Size:	50 µg
Concentration:	0.5 mg/ml

Immunohistochemistry Image:



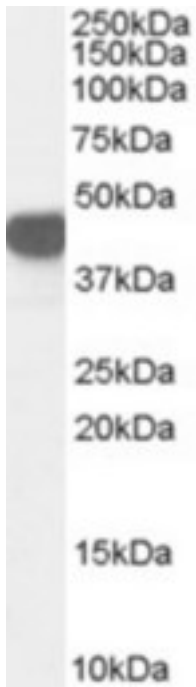
Anti-ASS1 antibody IHC of human kidney. Immunohistochemistry of formalin-fixed, paraffin-embedded tissue after heat-induced antigen retrieval. Antibody LS-B3948 concentration 2.5 ug/ml.

Immunohistochemistry Image:



Anti-ASS1 antibody IHC of human liver. Immunohistochemistry of formalin-fixed, paraffin-embedded tissue after heat-induced antigen retrieval. Antibody LS-B3948 concentration 2.5 ug/ml.

Western Blot Image:



Antibody (0.03 ug/ml) staining of Human Kidney lysate (35 ug protein in RIPA buffer). Primary incubation was 1 hour. Detected by chemiluminescence.

Requested From:

Japan

Laboratory Reagent For In Vitro Research Use Only

Not for resale without prior written consent from LifeSpan BioSciences, Inc.

Created on 9/23/2014

© 2014 LifeSpan BioSciences