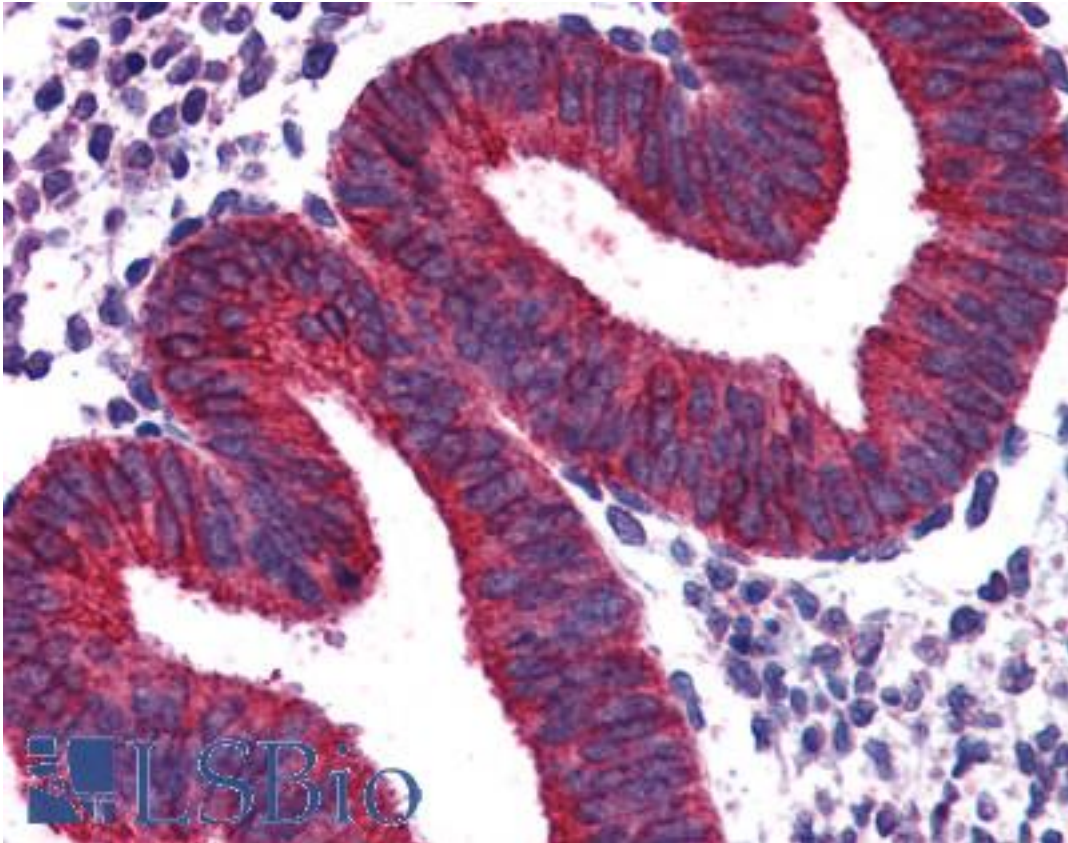


VPS29 Goat anti-Human Polyclonal (Internal) Antibody - LS-B3946 - LSBio

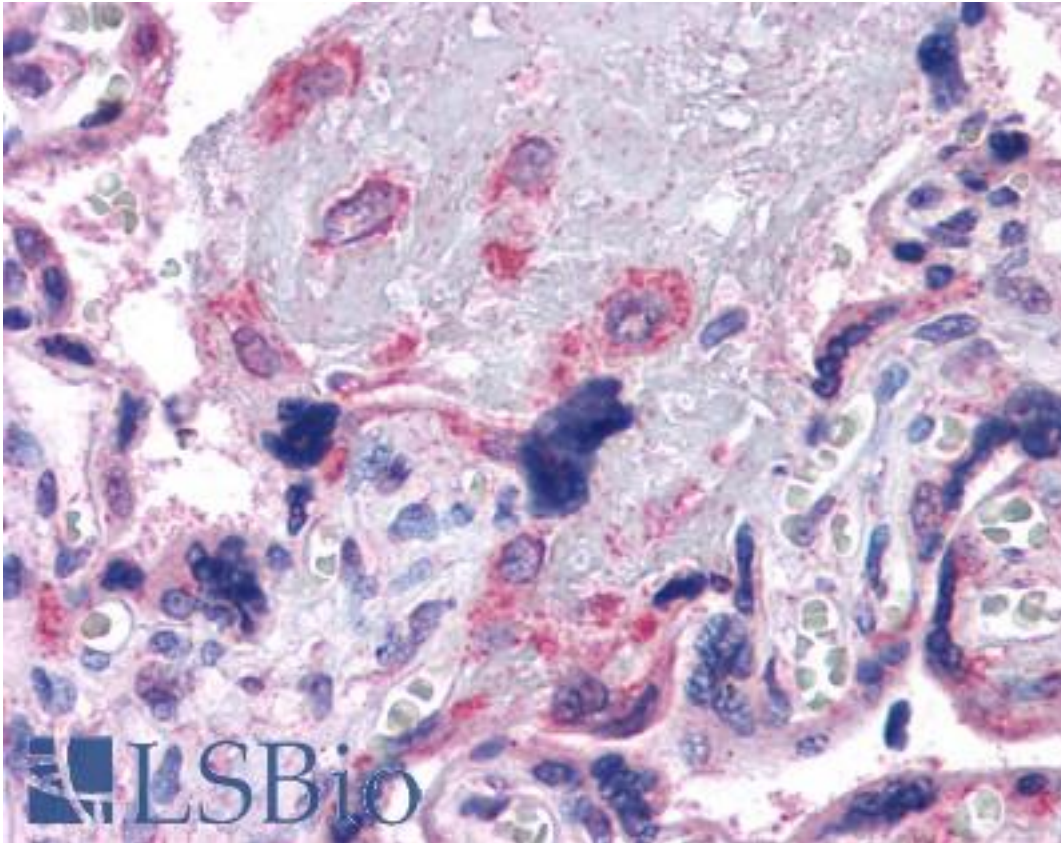
<b>CatalogID:</b>	LS-B3946
<b>Validation:</b>	This antibody replaces catalog number LS-C55675. It has been validated for use in the following assays: IHC-P.
<b>Target:</b>	vacuolar protein sorting 29 homolog (S. cerevisiae) (VPS29)
<b>Synonyms:</b>	VPS29 Antibody, DC7 Antibody, DC15 Antibody, HVPS29 Antibody, PEP11 Antibody, Retromer protein Antibody, Vesicle protein sorting 29 Antibody, X 007 protein Antibody, Vacuolar protein sorting 29 Antibody, PEP11 homolog Antibody
<b>Host</b>	VPS29 antibody was produced in Goat
<b>Clonality:</b>	Polyclonal
<b>Immunogen Species:</b>	VPS29 antibody was raised against Human
<b>Antigen Type:</b>	Synthetic peptide
<b>Immunogen:</b>	VPS29 antibody was raised against synthetic peptide CTGNLCTKESYDYLK from an internal region of human VPS29 (NP_057310.1; NP_476528.1). Percent identity by BLAST analysis: Human, Gorilla, Orangutan, Gibbon, Monkey, Marmoset, Mouse, Rat, Hamster, Panda, Dog, Bat, Bovine, Horse, Rabbit, Pig, Opossum, Platypus, Frog, Trout, Catfish, Salmon, Stickleback, Pufferfish, Zebrafish, Ant, Beetle, Tick (100%); Chicken, Xenopus, Seq squirt, Mosquito (93%); Drosophila, Trichoplax (87%); Eye worm, Sea anemone, Nematode, Capsaspora (80%).
<b>Specificity:</b>	Human VPS29. This antibody is expected to recognise both reported isoforms (NP_057310.1 and NP_476528.1).
<b>Epitope:</b>	Internal
<b>Reactivity:</b>	Human, Gorilla, Orangutan, Gibbon, Monkey, Mouse, Rat, Bat, Bovine, Dog, Hamster, Horse, Pig, Rabbit, Zebrafish
<b>Predicted Reactivity:</b>	Chicken, Xenopus, Insect
<b>Purification:</b>	Immunoaffinity purified
<b>Presentation:</b>	Tris-buffered saline, pH 7.3, 0.5% BSA, 0.02% sodium azide
<b>Recommended Storage:</b>	Store at -20°C. Minimize freezing and thawing.
<b>Uses:</b>	IHC - Paraffin (3.75 µg/ml), ELISA (1:16000) (Optimal dilution to be determined by the researcher)
<b>Size:</b>	50 µg
<b>Concentration:</b>	0.5 mg/ml

**Immunohistochemistry Image:**



Anti-VPS29 antibody IHC of human uterus. Immunohistochemistry of formalin-fixed, paraffin-embedded tissue after heat-induced antigen retrieval. Antibody LS-B3946 concentration 3.75 ug/ml.

**Immunohistochemistry Image:**



Anti-VPS29 antibody IHC of human placenta. Immunohistochemistry of formalin-fixed, paraffin-embedded tissue after heat-induced antigen retrieval. Antibody LS-B3946 concentration 3.75 ug/ml.

**Requested From:**

Japan

Laboratory Reagent For In Vitro Research Use Only

Not for resale without prior written consent from LifeSpan BioSciences, Inc.

Created on 9/23/2014

© 2014 LifeSpan BioSciences