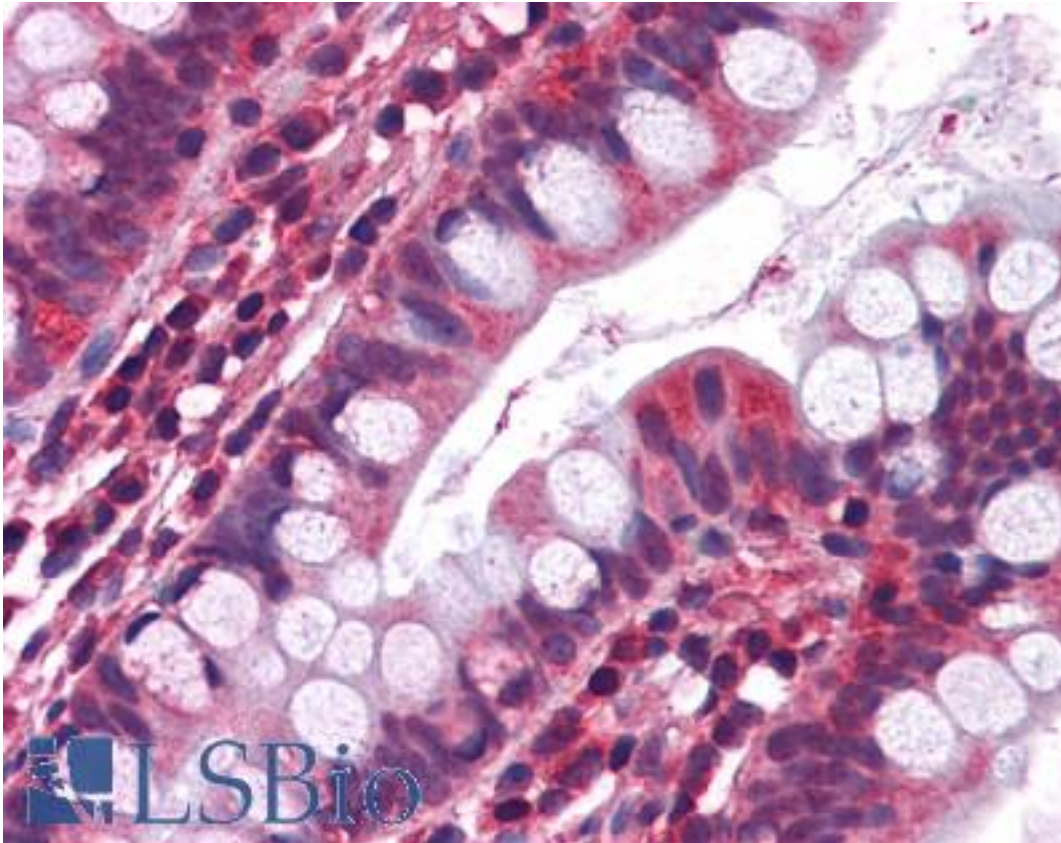


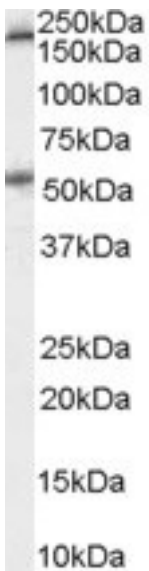
HTR3A / 5-HT3A Receptor Goat anti-Human Polyclonal (Internal) Antibody - LS-B3945 - LSBio	
CatalogID:	LS-B3945
Validation:	This antibody replaces catalog number LS-C55453. It has been validated for use in the following assays: IHC-P.
Target:	5-hydroxytryptamine (serotonin) receptor 3A, ionotropic (HTR3A)
Synonyms:	HTR3A Antibody, 5-HT3-A Antibody, 5-HT3R-A Antibody, 5-HT3 receptor Antibody, 5HT3 serotonin receptor Antibody, 5-HT3A Antibody, 5-HT3a receptor Antibody, 5-hydroxytryptamine receptor 3 Antibody, 5-HT-3 Antibody, 5-HT3 Antibody, 5-HT3R Antibody, 5HT3R Antibody, HTR3 Antibody, Serotonin receptor 3A Antibody
Family / Subfamily:	Ion channel / Serotonin 5-HT3 receptor
Host	HTR3A antibody was produced in Goat
Clonality:	Polyclonal
Immunogen Species:	HTR3A / 5-HT3A Receptor antibody was raised against Human
Antigen Type:	Synthetic peptide
Immunogen:	HTR3A / 5-HT3A Receptor antibody was raised against synthetic peptide C-GPQDFEKSPDR from an internal region of human HTR3A / 5-HT3A (NP_998786.2; NP_000860.2; NP_001155244.1). Percent identity by BLAST analysis: Human, Chimpanzee, Gorilla (100%); Orangutan (92%); Gibbon (83%).
Specificity:	Human HTR3A / 5-HT3A. This antibody is expected to recognise all three reported isoforms (NP_998786.2; NP_000860.2; NP_001155244.1).
Epitope:	Internal
Reactivity:	Human, Chimpanzee, Gorilla
Predicted Reactivity:	Orangutan
Purification:	Immunoaffinity purified
Presentation:	Tris-buffered saline, pH 7.3, 0.5% BSA, 0.02% sodium azide
Recommended Storage:	Store at -20°C. Minimize freezing and thawing.
Uses:	IHC - Paraffin (3.75 µg/ml), Western blot (0.3 - 1 µg/ml), ELISA (1:128000) (Optimal dilution to be determined by the researcher)
Size:	50 µg
Concentration:	0.5 mg/ml

Immunohistochemistry Image:



Anti-5HT3A receptor antibody IHC of human small intestine. Immunohistochemistry of formalin-fixed, paraffin-embedded tissue after heat-induced antigen retrieval. Antibody LS-B3945 concentration 3.75 ug/ml.

Western Blot Image:



Antibody (0.3 ug/ml) staining of Human Colon lysate (35 ug protein in RIPA buffer). Primary incubation was 1 hour. Detected by chemiluminescence.

Requested From:

Japan

Laboratory Reagent For In Vitro Research Use Only

Not for resale without prior written consent from LifeSpan BioSciences, Inc.

Created on 9/23/2014

© 2014 LifeSpan BioSciences